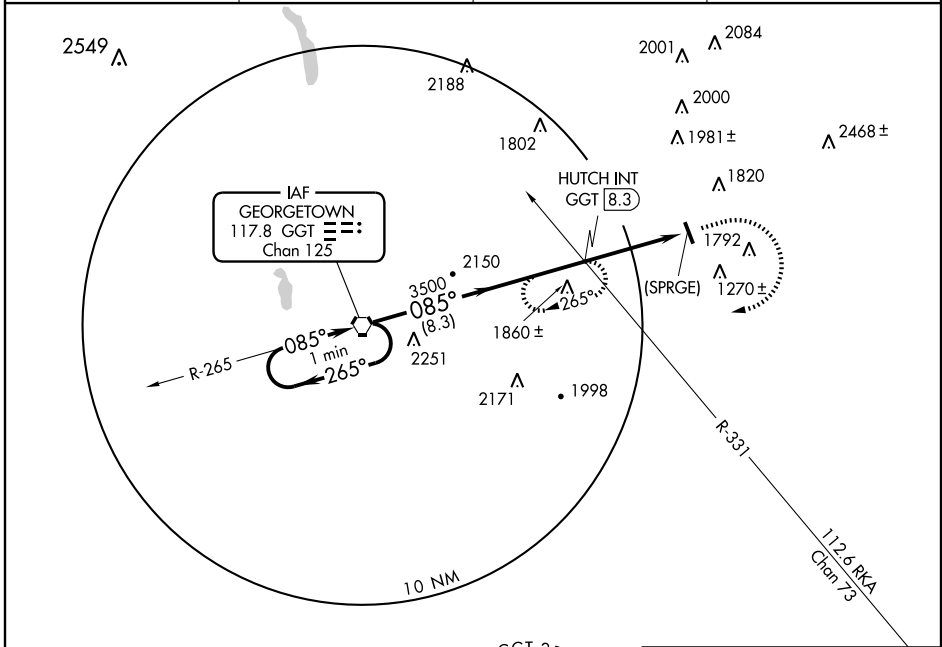


VORTAC GGT 117.8 Chan 125	APP CRS 085°	Rwy Idg TDZE Apt Elev N/A N/A 1134
--	------------------------	--

VOR or GPS-A
HAMILTON MUNI (VGC)

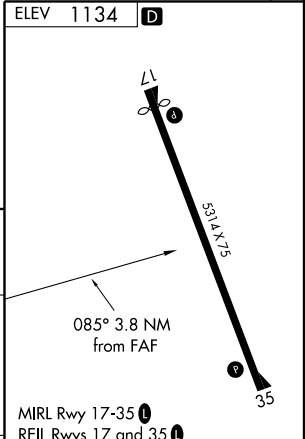
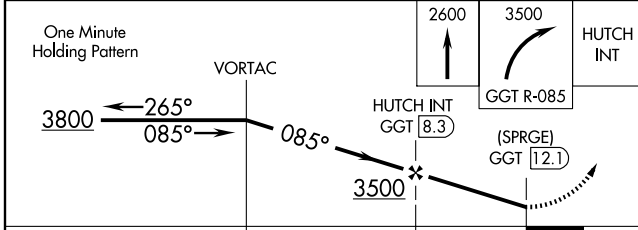
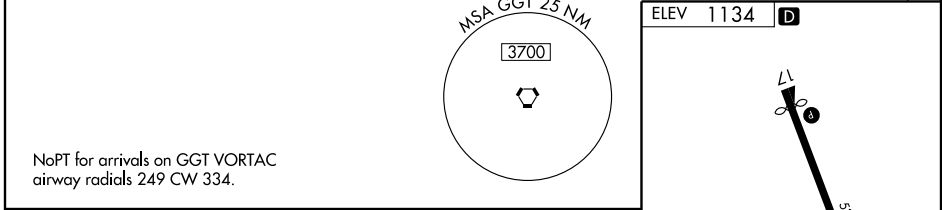
▽ ▲ NA	Use Syracuse Hancock Intl altimeter setting.	MISSED APPROACH: Climb to 2600 then climbing right turn to 3500 via GGT R-085 to HUTCH Int and hold.
-------------------------	--	--

AWOS-3 119.425	SYRACUSE APP CON 126.125 269.125	UNICOM 123.0 (CTAF)	122.7 0
--------------------------	--	-------------------------------	-----------------------



NE-2, 22 OCT 2009 to 19 NOV 2009

NE-2, 22 OCT 2009 to 19 NOV 2009



CATEGORY	A	B	C	D	FAF to MAP 3.8 NM					
CIRCLING	2240-1¼ 1106 (1200-1¼)	2240-1½ 1106 (1200-1½)	2240-3 1106 (1200-3)	NA	Knots	60	90	120	150	180
					Min:Sec	3:48	2:32	1:54	1:31	1:16