

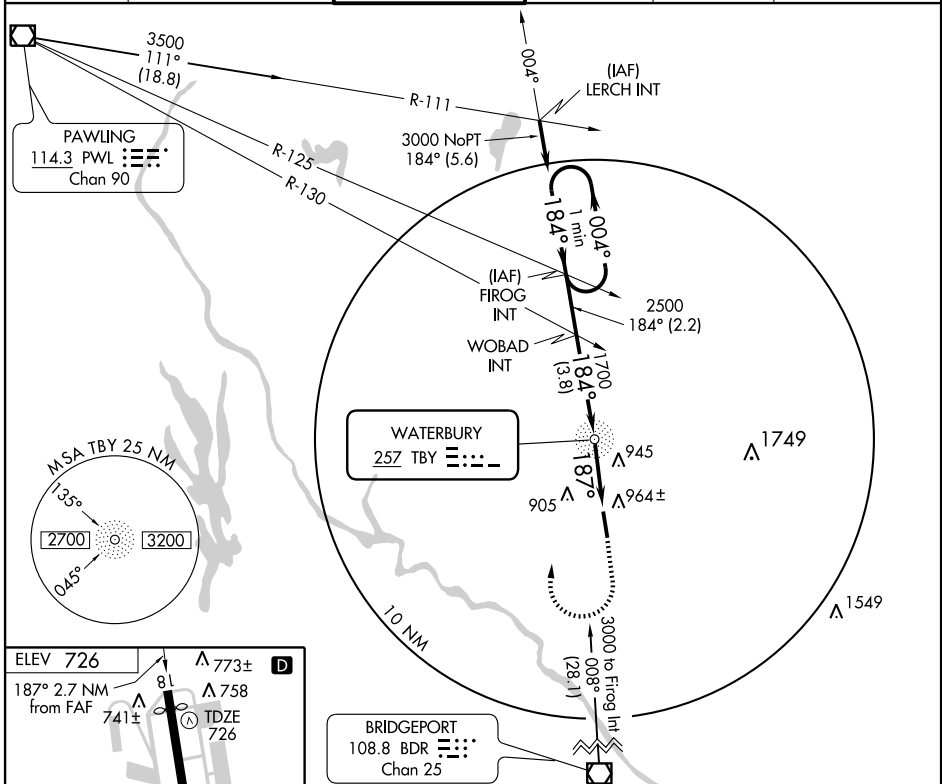
NDB RWY 18

OXFORD / WATERBURY-OXFORD (OXC)

NDB TBY 257	APP CRS 187°	Rwy Idg 5000
		TDZE 726
		Apt Elev 726

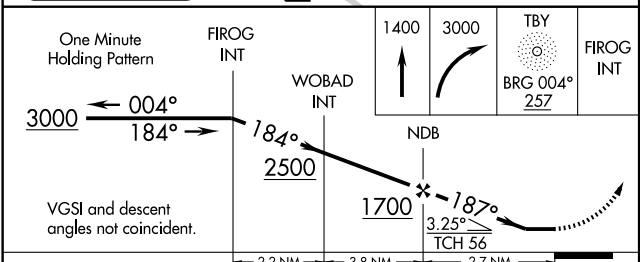
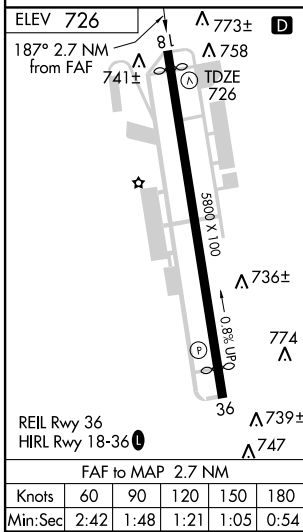
NA MISSED APPROACH: Climb to 1400 then climbing right turn to 3000 direct TBY NDB and via TBY NDB bearing 004° to FIROG INT and hold.

ATIS 132.975	NEW YORK APP CON 124.075 343.65	OXFORD TOWER ★ 118.475 (CTAF) 0	GND CON 121.65	CLNC DEL 121.65	UNICOM 122.7
------------------------	---	--	--------------------------	---------------------------	------------------------



NE-1, 22 OCT 2009 to 19 NOV 2009

NE-1, 22 OCT 2009 to 19 NOV 2009



CATEGORY	A	B	C	D
S-18	1280-1 554 (600-1)		1280-1½ 554 (600-1½)	1280-1¾ 554 (600-1¾)
CIRCLING	1280-1 554 (600-1)		1280-1½ 554 (600-1½)	1320-2 594 (600-2)