

OXFORD, CONNECTICUT

AL-5785 (FAA)

LOC/DME I-OXC 109.55 Chan 32 (Y)	APP CRS 005°	Rwy ldg 5000
		TDZE 721
		Apt Elev 726

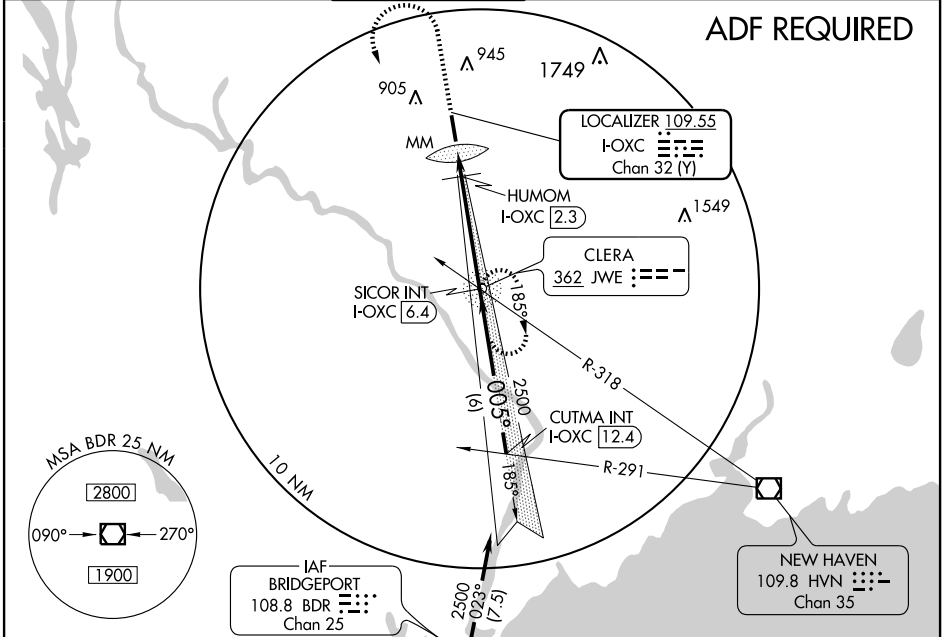
ILS or LOC RWY 36

OXFORD / WATERBURY-OXFORD (OXC)

NA

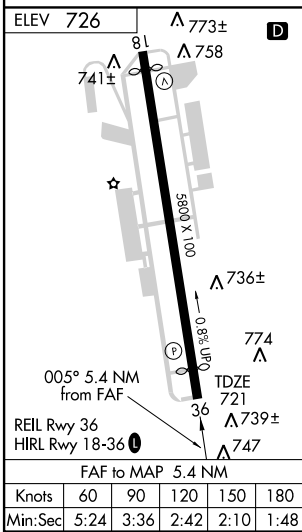
MISSED APPROACH: Climb to 1200, then climbing left turn to 2500 direct CLERA NDB and hold.

ATIS 132.975	NEW YORK APP CON 124.075 343.65	OXFORD TOWER ★ 118.475 (CTAF) 1	GND CON 121.65	CLNC DEL 121.65	UNICOM 122.7
------------------------	---	--	--------------------------	---------------------------	------------------------



NE-1, 22 OCT 2009 to 19 NOV 2009

NE-1, 22 OCT 2009 to 19 NOV 2009



1200	2500	JWE 362	SICOR INT I-OXC 6.4	CUTMA INT I-OXC 12.4	Procedure Turn NA
↑	↶		2500	2500	GS 3.00° TCH 56
		HUMOM I-OXC 2.3	2500	2500	*LOC only GS unusable below 965' MSL.
		I-OXC MM	005°	005°	
		1180*	0.6	0.7	4.1 NM
					6 NM
CATEGORY	A	B	C	D	
S-ILS 36	971-1 250 (300-1)				
S-LOC 36	1180-1	459 (500-1)	1180-1¼ 459 (500-1¼)	1180-1½ 459 (500-1½)	
CIRCLING	1280-1	554 (600-1)	1280-1½ 554 (600-½)	1320-2 594 (600-2)	
HUMOM FIX MINIMUMS					
S-LOC 36	1040-1 319 (400-1)				
CIRCLING	1280-1	554 (600-1)	1280-1½ 554 (600-½)	1320-2 594 (600-2)	

OXFORD, CONNECTICUT
Amdt 13 09015

41°29'N - 73°08'W

ILS or LOC RWY 36

OXFORD / WATERBURY-OXFORD (OXC)