

RNAV (GPS) RWY 6

CLINTON/ SAMPSON COUNTY (CTZ)

APP CRS	Rwy Idg	5000
060°	TDZE	143
	Apt Elev	148

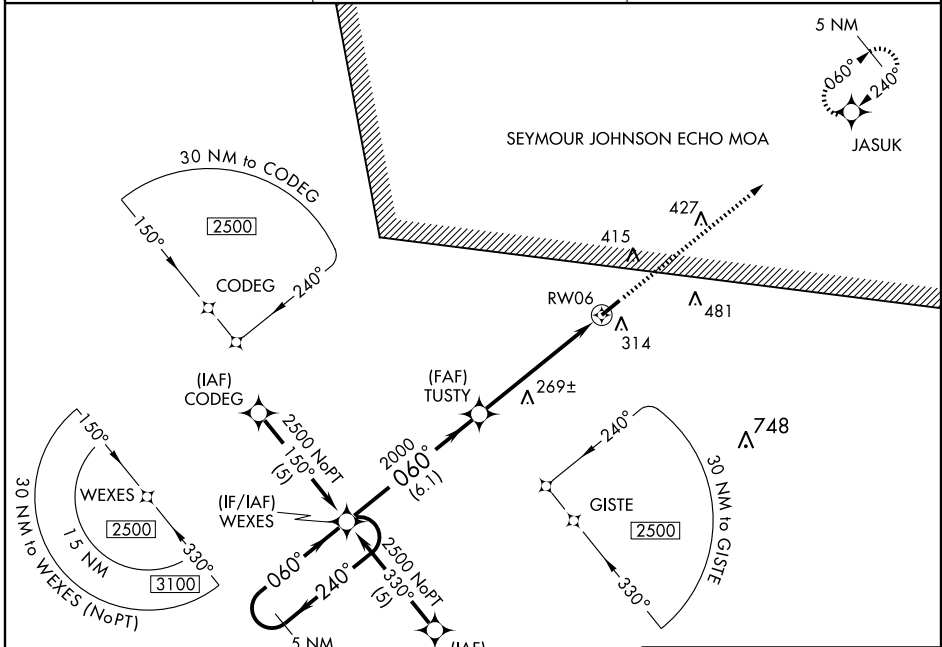
⚠ If local altimeter setting not received, use Fayetteville altimeter setting and increase all MDA's 80 feet. DME/DME RNP-0.3 NA.
⚠ VDP NA when using Fayetteville altimeter setting.

MISSED APPROACH: Climb to 2500 direct JASUK and hold.

AWOS-3
119.125

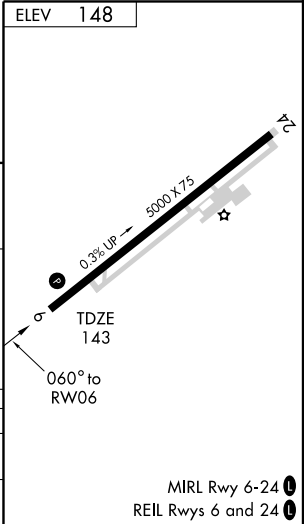
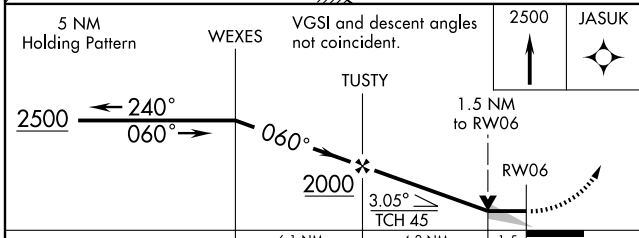
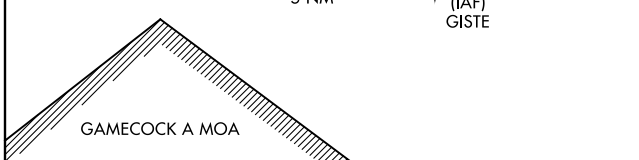
FAYETTEVILLE APP CON
133.0 295.0

UNICOM
122.8 (CTAF) 0



SE-2, 22 OCT 2009 to 19 NOV 2009

SE-2, 22 OCT 2009 to 19 NOV 2009



CATEGORY	A	B	C	D
LNVA MDA	620-1	477 (500-1)	620-1¼ 477 (500-1¼)	620-1½ 477 (500-1½)
CIRCLING	680-1	532 (600-1)	780-1¾ 632 (700-1¾)	780-2 632 (700-2)