

CLINTON, NORTH CAROLINA

AL-5782 (FAA)

LOC RWY 6

CLINTON/SAMPSON COUNTY (CTZ)

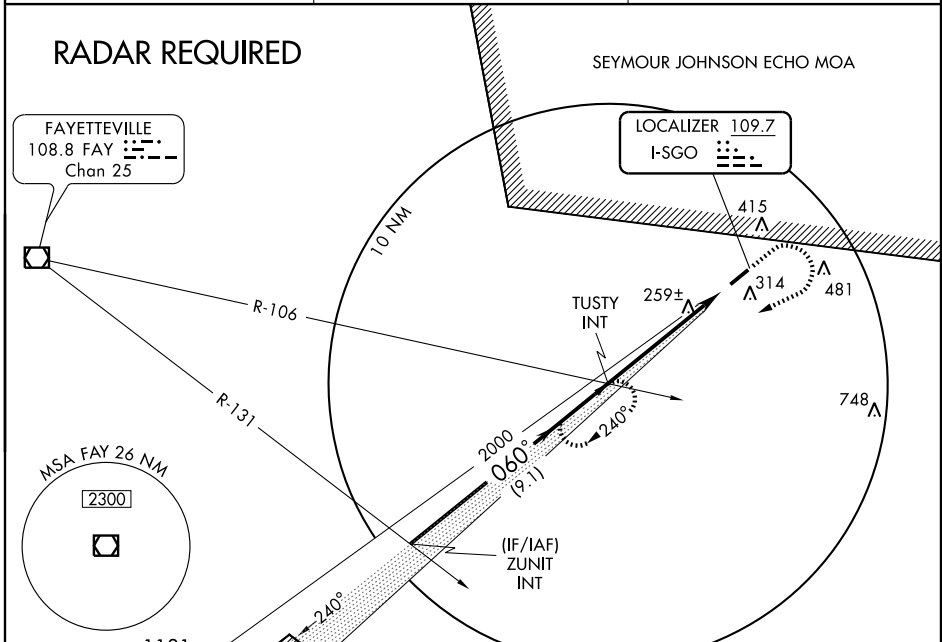
LOC I-SGO	APP CRS	Rwy Idg	5000
109.7	060°	TDZE	143
		Apt Elev	148

▼ If local altimeter setting not received, use Fayetteville altimeter setting and increase all MDAs 80 feet.
▲ NA

MISSED APPROACH: Climb to 1300 then climbing right turn to 2000 via heading 270° and I-SGO SW Course to TUSTY INT and hold.

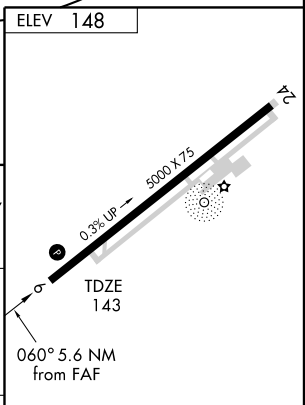
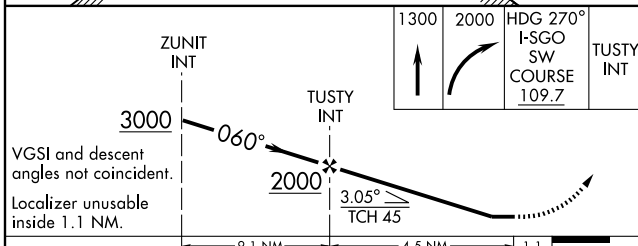
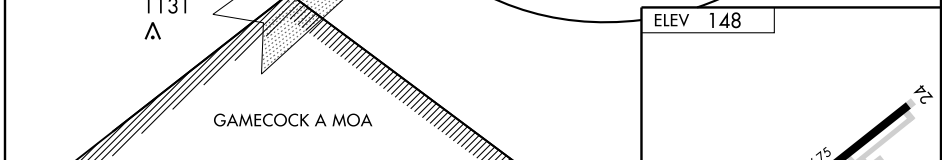
AWOS-3 119.125	FAYETTEVILLE APP CON 133.0 295.0	UNICOM 122.8 (CTAF) 0
--------------------------	--	---------------------------------

RADAR REQUIRED



SE-2, 22 OCT 2009 to 19 NOV 2009

SE-2, 22 OCT 2009 to 19 NOV 2009



CATEGORY	A	B	C	D
S-6	520-1½ 377 (400-1½)			
CIRCLING	680-1½	532 (600-1½)	780-1¾ 632 (700-1¾)	780-2 632 (700-2)

MIRL Rwy 6-24 0				
REIL Rws 6 and 24 0				
FAF to MAP 4.5 NM				
Knots	60	90	120	150 180
Min:Sec	4:30	3:00	2:15	1:48 1:30

CLINTON, NORTH CAROLINA
Amdt 2 08101

34° 58' N-78° 22' W

CLINTON/SAMPSON COUNTY (CTZ)

LOC RWY 6