

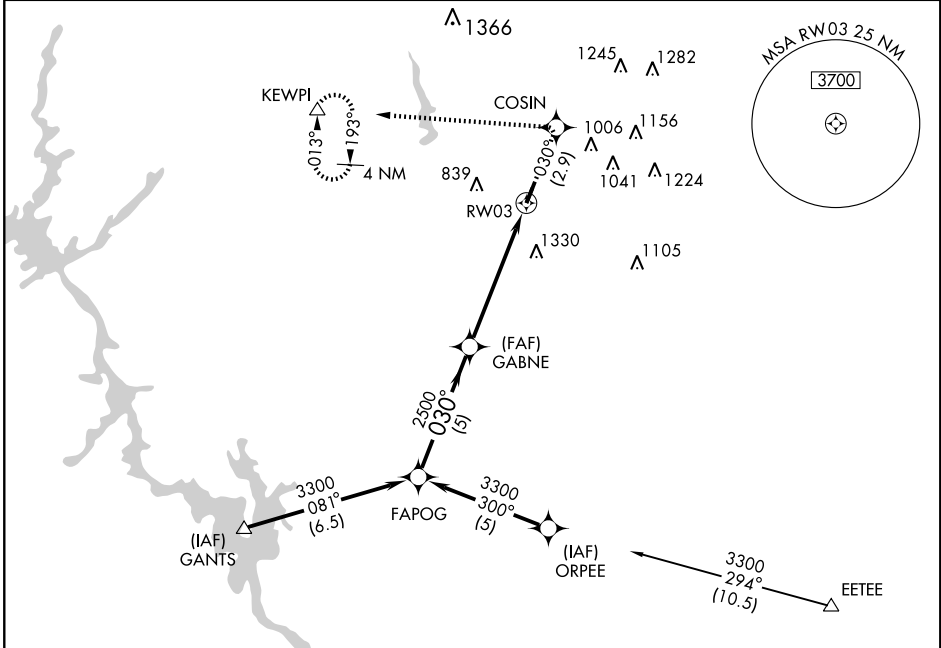
# RNAV (GPS) RWY 3

ASHEBORO RGNL (HBI)

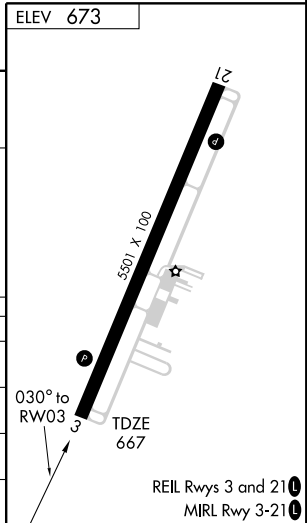
APP CRS	Rwy Idg	<b>5501</b>
<b>030°</b>	TDZE	<b>667</b>
	Apt Elev	<b>673</b>

<p>▼ GPS or RNP-0.3 Required.</p> <p>▲ NA DME/DME RNP-0.3 NA.</p> <p>Baro VNAV NA below -16°C (3°F)</p>	<p>MISSED APPROACH: Climb to 3000 via 030° course to COSIN WP then turn left direct KEWPI WP and hold.</p>	
---	--	--

AWOS-3 <b>119.275</b>	GREENSBORO APP CON <b>118.5 327.075</b>	GCO <b>130.70</b>	UNICOM <b>122.8(CTAF)</b>
--------------------------	--	----------------------	------------------------------



<p>FAPOG</p> <p>3300</p> <p>Procedure Turn NA</p> <p>GS 3.00° TCH 45</p>	<p>VGSI and descent angles not coincident.</p>		<p>3000</p> <p>↑</p> <p>CRS 030°</p>	<p>COSIN</p> <p>✧</p>	<p>KEWPI</p> <p>△</p>
	<p>030°</p> <p>2500</p>	<p>GABNE</p>	<p>*2.5 NM to RW03</p>	<p>RW03</p>	<p>*LNAV only.</p>
<p>← 5 NM      3 NM      2.5 NM →</p>					
CATEGORY	A	B	C	D	
GLS PA DA	NA				
LNAV/VNAV DA	1320-2¼ 653 (700-2¼)				
LNAV MDA	1520-1 853 (900-1)	1520-1¼ 853 (900-1¼)	1520-2½ 853 (900-2½)	1520-2¾ 853 (900-2¾)	
CIRCLING	1520-2¼ 847 (900-2¼)		1520-2½ 847 (900-2½)	1680-3 1007 (1100-3)	



SE-2, 22 OCT 2009 to 19 NOV 2009

SE-2, 22 OCT 2009 to 19 NOV 2009