

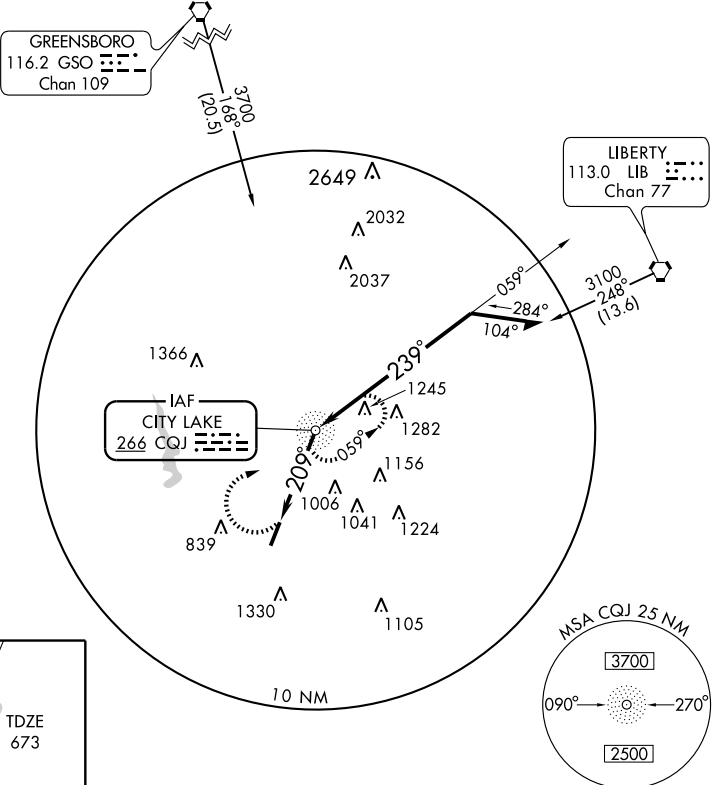
NDB RWY 21

ASHEBORO RGNL (HBI)

NDB CQJ 266	APP CRS 209°	Rwy Idg TDZE Apt Elev	5501 673 673
-----------------------	------------------------	-----------------------------	---

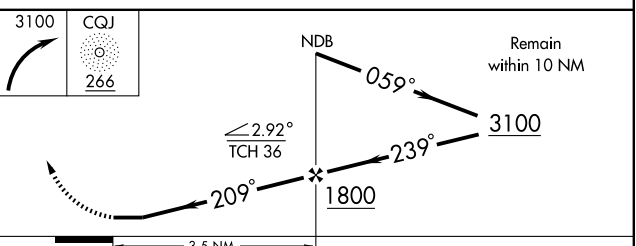
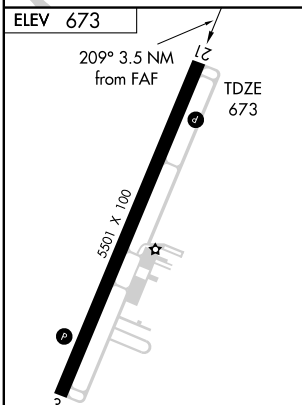
MISSED APPROACH: Climbing right turn to 3100 direct CQJ NDB and hold.

AWOS-3 119.275	GREENSBORO APP CON 118.5 327.075	GCO 130.70	UNICOM 122.8(CTAF)
--------------------------	--	----------------------	------------------------------



SE-2, 22 OCT 2009 to 19 NOV 2009

SE-2, 22 OCT 2009 to 19 NOV 2009



CATEGORY	A	B	C	D
S-21	1300-1	627 (700-1)	1300-1 ³ / ₄ 627 (700-1 ³ / ₄)	1300-2 627 (700-2)
CIRCLING	1300-1 627 (700-1)	1360-1 687 (700-1)	1440-2 ¹ / ₄ 767 (800-2 ¹ / ₄)	1680-3 1007 (1100-3)