

VOR/DME SCC	APP CRS	Rwy Idg	6500
113.9	052°M	TDZE	65
Chan 86	(223°G)	Apt Elev	65

# VOR/DME RWY 5

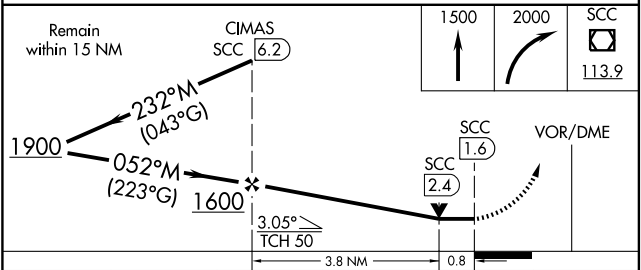
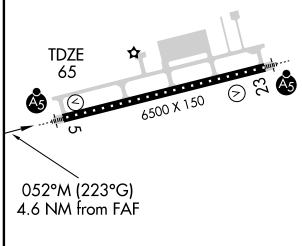
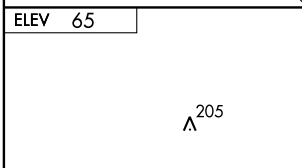
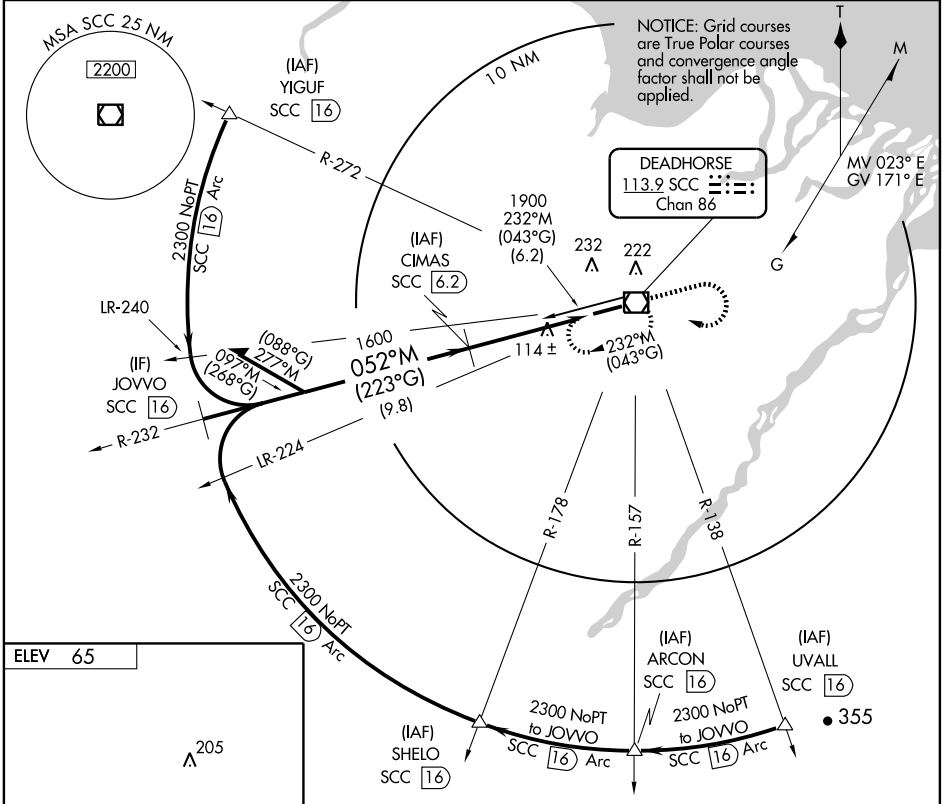
DEADHORSE (SCC) (PASC)

**⚠** Inoperative table does not apply to S-5 Cats D and E, and when using Nuiqsut altimeter setting. When local altimeter setting not received, use Nuiqsut altimeter setting and increase all MDAs 140 feet, and all visibilities ¾ mile. VDP NA when using Nuiqsut altimeter setting.



**MISSED APPROACH:** Climb to 1500 then climbing right turn to 2000 direct SCC VOR/DME and hold.

ATIS <b>118.4</b>	ANCHORAGE CENTER <b>134.4 370.9</b>	DEADHORSE RADIO <b>123.6 (CTAF) 0</b>
----------------------	--	--



CATEGORY	A	B	C	D	E
S-5	380/24	315 (400-½)		380/50	315 (400-1)
CIRCLING	540-1	475 (500-1)	540-1½ 475 (500-1½)	620-2	555 (600-2)

AK, 22 OCT 2009 to 17 DEC 2009

AK, 22 OCT 2009 to 17 DEC 2009