

DEADHORSE, ALASKA

AL-5776 (FAA)

VOR/DME SCC 113.9 Chan 86	APP CRS 052°M (223°G)	Rwy Idg 6500 TDZE 65 Apt Elev 65
---	---	---

VOR RWY 5
DEADHORSE (SCC) (PASC)

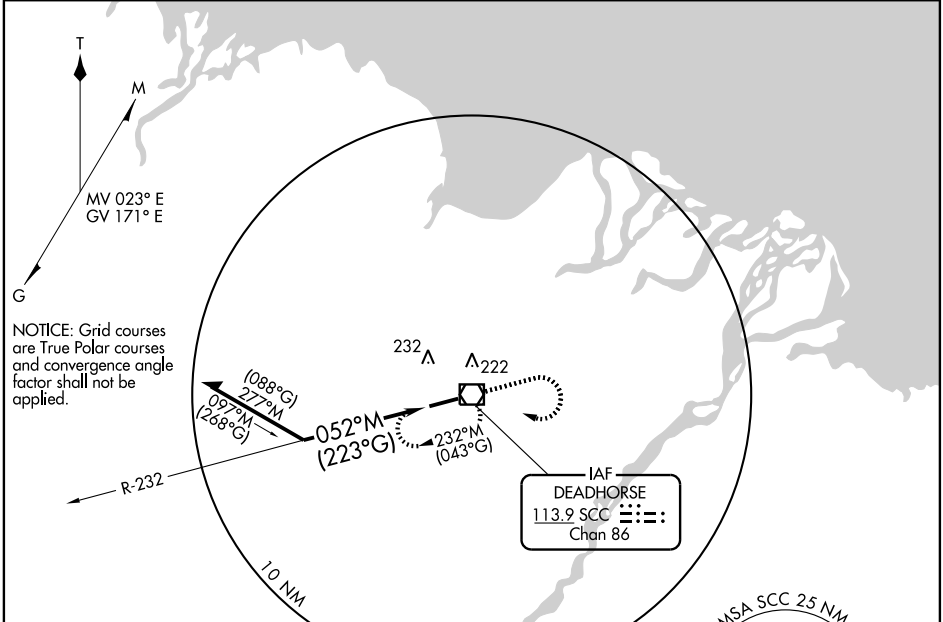
⚠ When local altimeter setting not received, use Nuiqsut altimeter setting and increase all MDAs 140 feet, and all visibilities ¾ mile. VDP NA when using Nuiqsut altimeter setting. When using Nuiqsut altimeter setting, inoperative table does not apply.

MALSR
AS

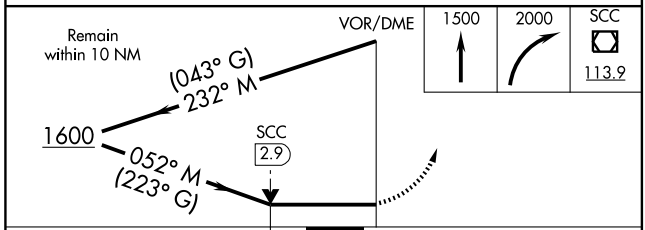
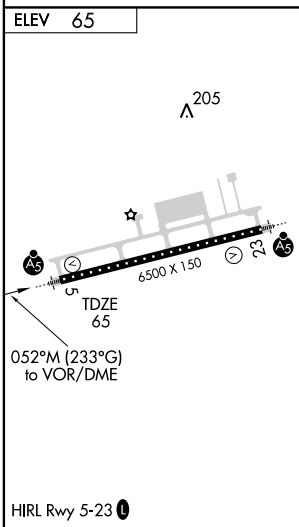
MISSED APPROACH: Climb to 1500 then climbing right turn to 2000 direct SCC VOR/DME and hold.

ATIS 118.4	ANCHORAGE CENTER 134.4 370.9	DEADHORSE RADIO 123.6 (CTAF) 0
----------------------	--	--

AK, 22 OCT 2009 to 17 DEC 2009



AK, 22 OCT 2009 to 17 DEC 2009



CATEGORY	A	B	C	D
S-5	520/24	455 (500-½)	520/40 455 (500-¾)	520/50 455 (500-1)
CIRCLING	540-1	475 (500-1)	540-1½ 475 (500-1½)	620-2 555 (600-2)

DEADHORSE, ALASKA
Amdt 4 09239

70° 12' N-148° 28' W

DEADHORSE (SCC) (PASC)
VOR RWY 5