

DEADHORSE, ALASKA

AL-5776 (FAA)

VOR/DME SCC 113.9 Chan 86	APP CRS 232°M (043°G)	Rwy Idg 6500 TDZE 63 Apt Elev 65
---	---	---

VOR RWY 23

DEADHORSE (SCC) (PASC)

⚠ When local altimeter setting not received, use Nuiqsut altimeter setting and increase all MDAs 140 feet, and all visibilities 1 mile. VDP NA when using Nuiqsut altimeter setting. When using Nuiqsut altimeter setting, inoperative table does not apply.

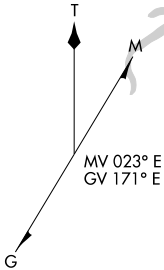


MISSED APPROACH: Climb to 1500 then climbing right turn to 2000 direct SCC VOR/DME and hold.

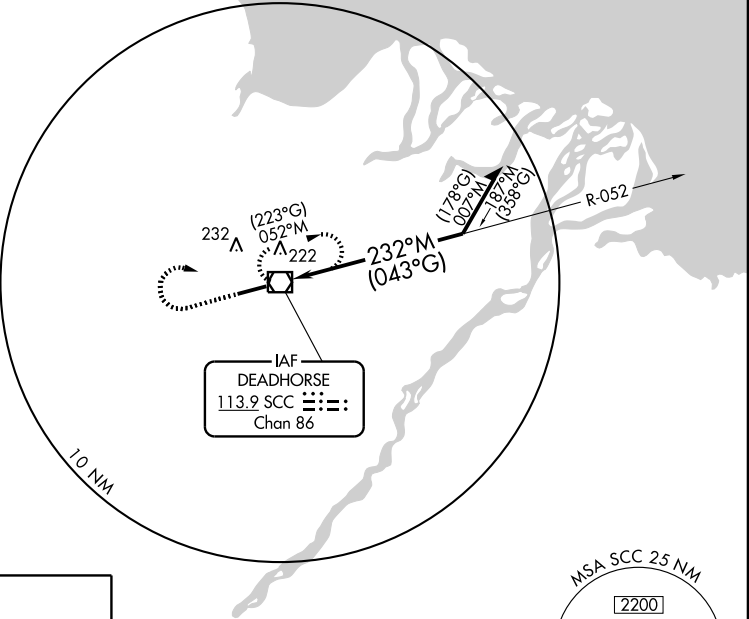
ATIS
118.4

ANCHORAGE CENTER
134.4 370.9

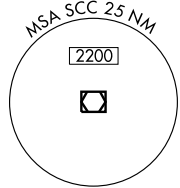
DEADHORSE RADIO
123.6 (CTAF)



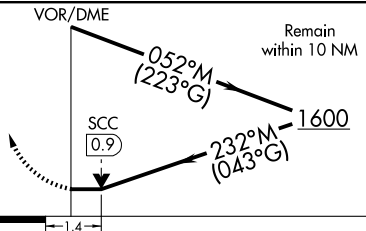
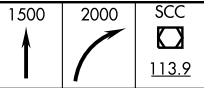
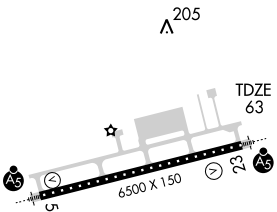
NOTICE: Grid courses are True Polar courses and convergence angle factor shall not be applied.



IAF
DEADHORSE
113.9 SCC
Chan 86



ELEV 65



CATEGORY	A	B	C	D
S-23	540/24	477 (500-½)	540/40 477 (500-¾)	540/50 477 (500-1)
CIRCLING	540-1	475 (500-1)	540-1½ 475 (500-1½)	620-2 555 (600-2)

HIRL Rwy 5-23

DEADHORSE, ALASKA
Amdt 6 09239

70° 12' N-148° 28' W

VOR RWY 23

DEADHORSE (SCC) (PASC)

AK, 22 OCT 2009 to 17 DEC 2009

AK, 22 OCT 2009 to 17 DEC 2009