

# VOR/DME RWY 36

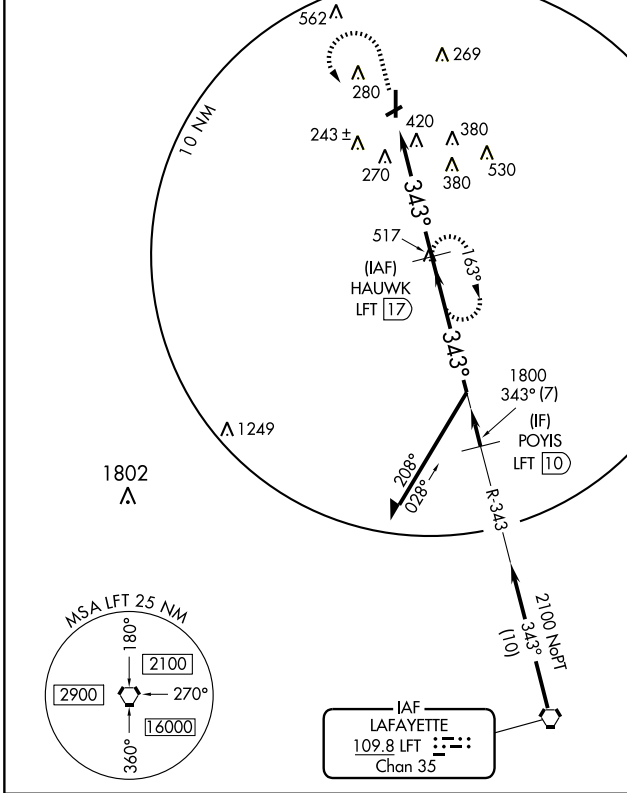
OPELOUSAS/ST. LANDRY PARISH-AHART FIELD (OPL)

VORTAC LFT <b>109.8</b> Chan 35	APP CRS <b>343°</b>	Rwy ldg TDZE Apt Elev	<b>5210</b> <b>74</b> <b>75</b>
---------------------------------------	------------------------	-----------------------------	---------------------------------------

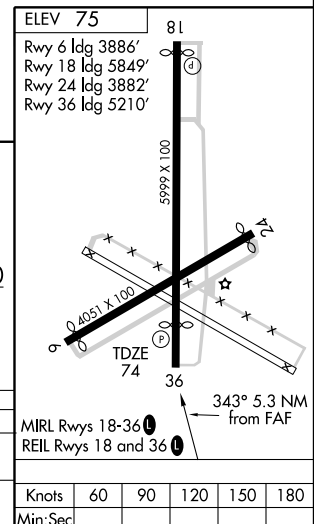
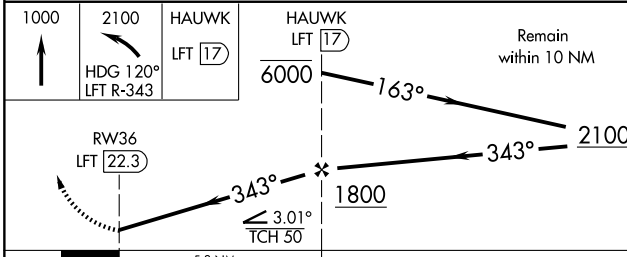
**▼** If local altimeter setting not received, use Lafayette Rgnl altimeter setting and increase all MDAs 60 feet. Visibility reduction by helicopters NA.

**MISSED APPROACH:** Climb to 1000 then climbing left turn to 2100 via heading 120° and LFT R-343 to HAUWK 17 DME and hold.

LAFAYETTE APP CON ★ <b>128.7 268.7</b>	GCO <b>135.075</b>	UNICOM <b>123.0 (CTAF) 0</b>
---	-----------------------	---------------------------------



Procedure NA for arrivals at LFT VORTAC via V559 southbound.



CATEGORY	A	B	C	D
S-36	720-1 646 (700-1)	720-1¼ 646 (700-1¼)	720-1¾ 646 (700-1¾)	720-2 646 (700-2)
CIRCLING	780-1 705 (800-1)	780-1¼ 705 (800-1¼)	780-2 705 (800-2)	780-2¼ 705 (800-2¼)

MRL Rwy 18-36 0					
REIL Rwy 18 and 36 0					
Knots	60	90	120	150	180
Min:Sec					

# VOR/DME RWY 36

SC-4, 22 OCT 2009 to 19 NOV 2009

SC-4, 22 OCT 2009 to 19 NOV 2009