

NDB RWY 18

OPELOUSAS/ST. LANDRY PARISH-AHART FIELD (OPL)

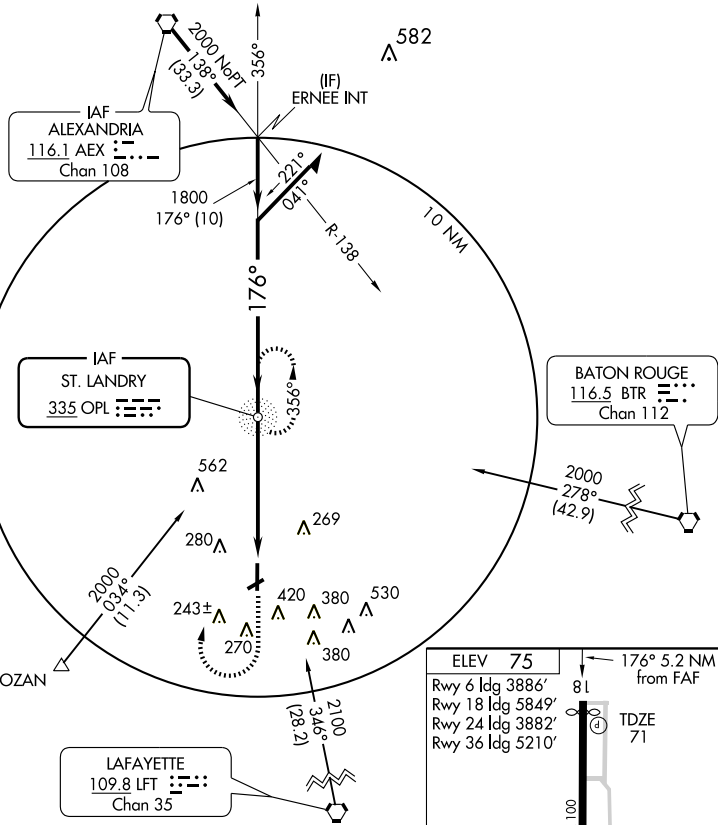
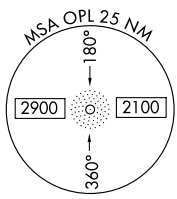
NDB OPL 335	APP CRS 176°	Rwy ldg TDZE Apt Elev	5849 71 75
-----------------------	------------------------	-----------------------------	---------------------------------------

▽ If local altimeter setting not received, use Lafayette Rgnl altimeter setting and increase all MDAs 60 feet.

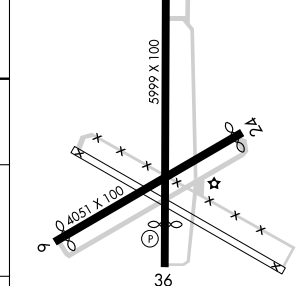
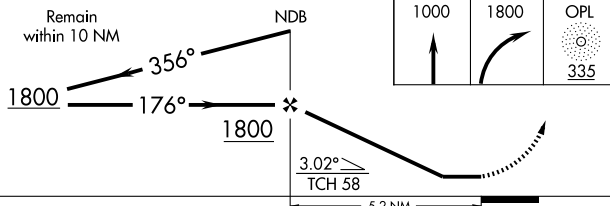
MISSED APPROACH: Climb to 1000 then climbing right turn to 1800 direct OPL NDB and hold.

▲ NA

LAFAYETTE APP CON* 128.7 268.7	GCO 135.075	UNICOM 123.0 (CTAF) 0
--	-----------------------	---------------------------------



ELEV 75	← 176° 5.2 NM from FAF
Rwy 6 ldg 3886'	81
Rwy 18 ldg 5849'	TDZE 71
Rwy 24 ldg 3882'	
Rwy 36 ldg 5210'	



CATEGORY	A	B	C	D
S-18	640-1 569 (600-1)	640-1½ 569 (600-1½)	640-1¾ 569 (600-1¾)	640-2 569 (600-2)
CIRCLING	780-1 705 (800-1)	780-2 705 (800-2)	780-2¼ 705 (800-2¼)	780-3 705 (800-3)

REIL Rwy 18 and 36	0				
MIRL Rws 18-36	0				
FAF to MAP 5.2 NM					
Knots	60	90	120	150	180
Min:Sec	5:12	3:28	2:36	2:05	1:44

NDB RWY 18

SC-4, 22 OCT 2009 to 19 NOV 2009

SC-4, 22 OCT 2009 to 19 NOV 2009