

RNAV (GPS) RWY 36

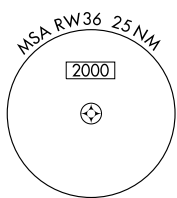
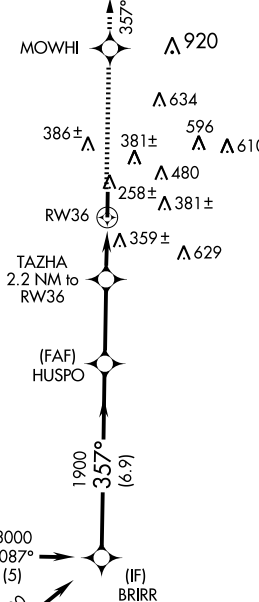
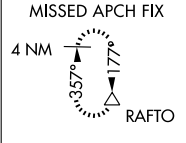
JASPER COUNTY-BELL FIELD (JAS)

WAAS CH 42813 W36A	APP CRS 357°	Rwy Idg TDZE 192 Apt Elev 213	5500
--	------------------------	---	-------------

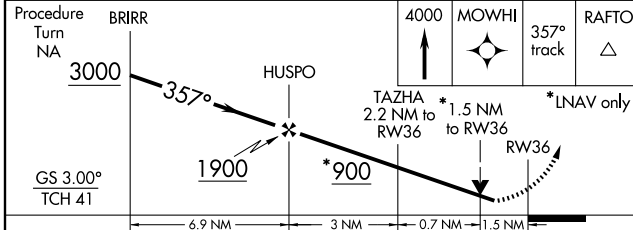
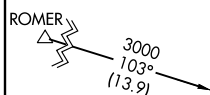
▼ Baro-VNAV NA when using De Ridder altimeter setting. For uncompensated Baro-VNAV systems, LNAV/VNAV NA below -1.5°C (5°F) or above 54°C (130°F). DME/DME RNP-0.3 NA.
▲ Visibility reduction by helicopters NA. VDP NA when using De Ridder altimeter setting. When local altimeter setting not received, use De Ridder altimeter setting and increase all DA 85 feet, all MDA 100 feet, increase LPV and LNAV/VNAV all Cats visibility ¼ mile, LNAV Cat C visibility ¼ mile, Circling Cat C ¼ mile.

MISSED APPROACH:
Climb to 4000 direct MOWHI and via track 357° to RAFTO and hold.

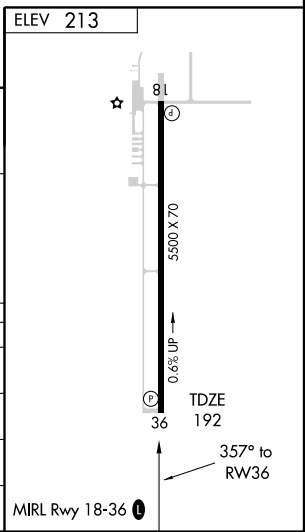
AWOS-3 118.375	HOUSTON CENTER 126.95 363.05	UNICOM 122.8 (CTAF) 0
--------------------------	--	---------------------------------



Procedure NA for arrivals at ROMER via V569 northwest bound.



CATEGORY	A	B	C	D
LPV DA	581-1½	389 (400-1½)		NA
LNAV/VNAV DA	675-1¾	483 (500-1¾)		NA
LNAV MDA	680-1	488 (500-1)	680-1¼ 488 (500-1¼)	NA
CIRCLING	740-1	527 (600-1)	740-1½ 527 (600-1½)	NA



SC-5, 22 OCT 2009 to 19 NOV 2009

SC-5, 22 OCT 2009 to 19 NOV 2009