

# RNAV (GPS) RWY 18

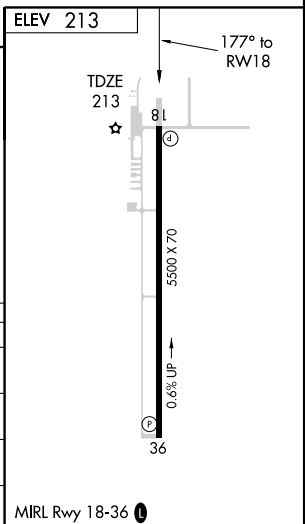
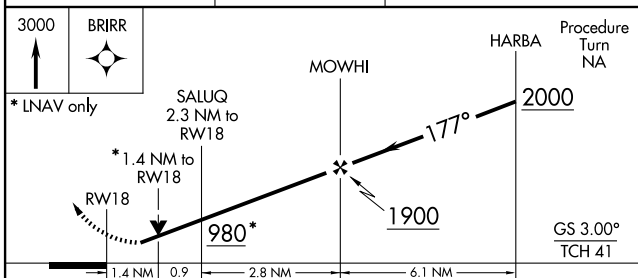
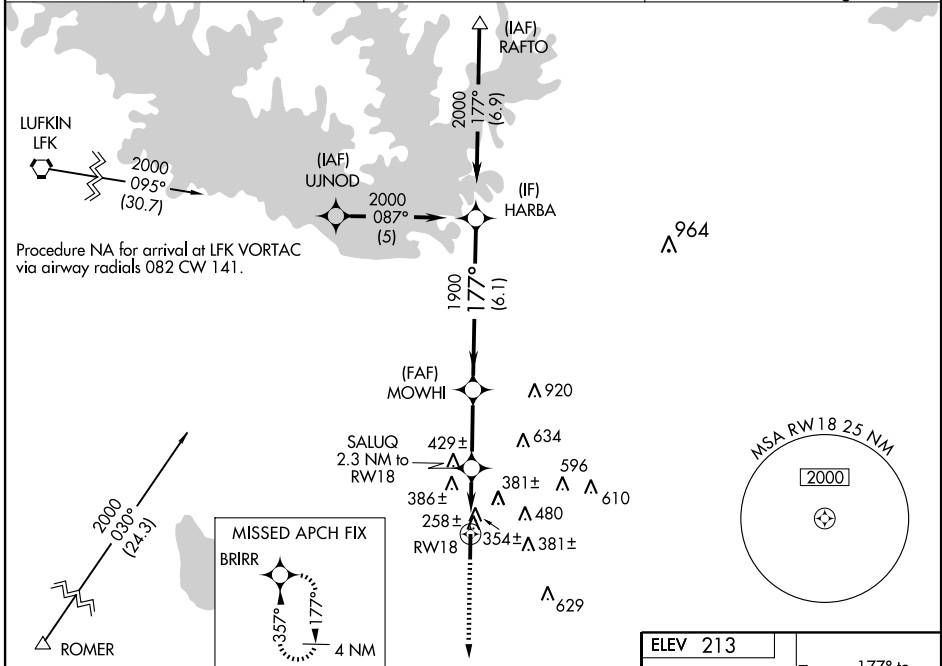
JASPER COUNTY-BELL FIELD (JAS)

WAAS CH <b>87013</b> <b>W18A</b>	APP CRS <b>177°</b>	Rwy Idg TDZE Apt Elev	<b>5500</b> <b>213</b> <b>213</b>
--	------------------------	-----------------------------	---

**▼** Baro-VNAV NA when using De Ridder altimeter setting. For uncompensated Baro-VNAV systems, LNAV/VNAV NA below -15°C (5°F) or above 54°C (130°F). DME/DME RNP-0.3 NA.  
**▲** Visibility reduction by helicopters NA. VDP NA when using De Ridder altimeter setting.  
 When local altimeter setting not received, use De Ridder altimeter setting and increase all DA 85 feet, all MDA 100 feet, increase LPV all Cats visibility 1/4 mile, LNAV/VNAV all Cats visibility 1/2 mile, LNAV Cat C visibility 1/4 mile, Circling Cat C 1/4 mile.

**MISSED APPROACH:**  
Climb to 3000 direct BRIRR and hold.

AWOS-3 <b>118.375</b>	HOUSTON CENTER <b>126.95 363.05</b>	UNICOM <b>122.8</b> (CTAF) <b>0</b>
--------------------------	--	--



CATEGORY	A	B	C	D
LPV DA	567-1¼ 354 (400-1¼)			NA
LNAV/VNAV DA	730-1¾ 517 (600-1¾)			NA
LNAV MDA	700-1	487 (500-1)	700-1¼ 487 (500-1¼)	NA
CIRCLING	740-1	527 (600-1)	740-1½ 527 (600-1½)	NA

SC-5, 22 OCT 2009 to 19 NOV 2009

SC-5, 22 OCT 2009 to 19 NOV 2009