

NDB RWY 18

JASPER COUNTY-BELL FIELD (JAS)

NDB JAS 344	APP CRS 177°	Rwy Idg TDZE 213 Apt Elev 213	5500
-----------------------	------------------------	---	-------------

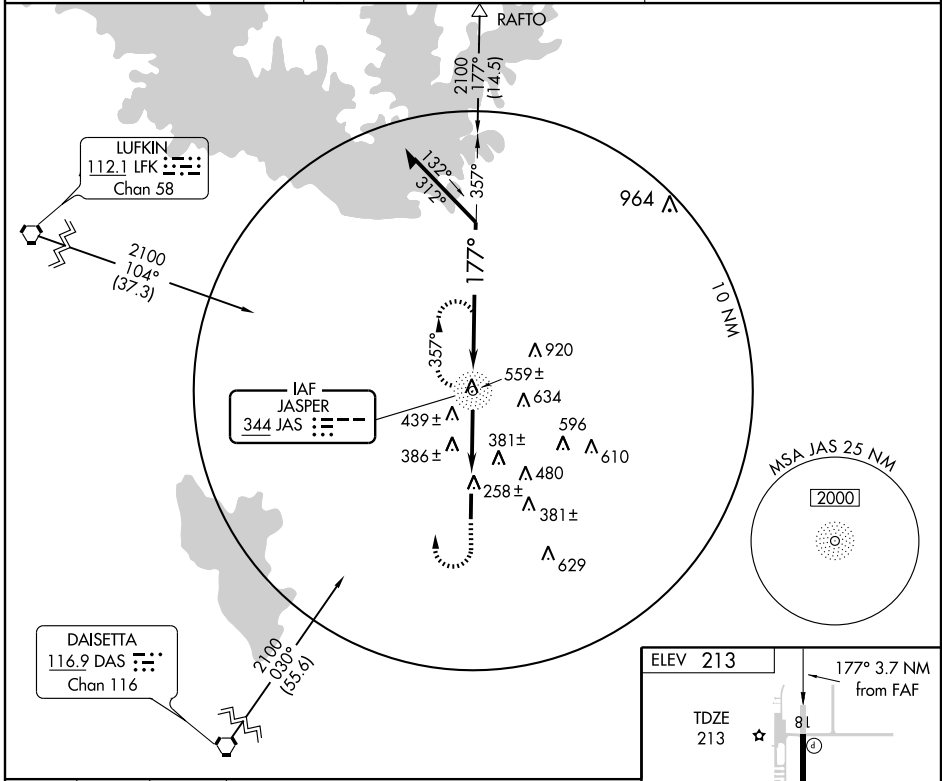
⚠ Visibility reduction by helicopters NA. When local altimeter setting not received, use De Ridder altimeter setting and increase all MDA 100 feet, increase S-18 and Circling Cat C visibility ¼ mile.

MISSED APPROACH: Climb to 2100, then right turn direct JAS NDB and hold.

AWOS-3
118.375

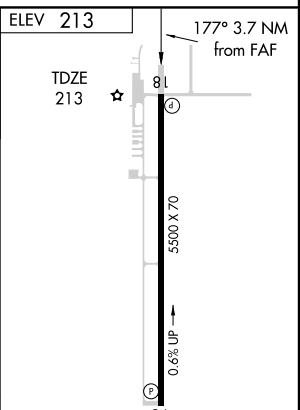
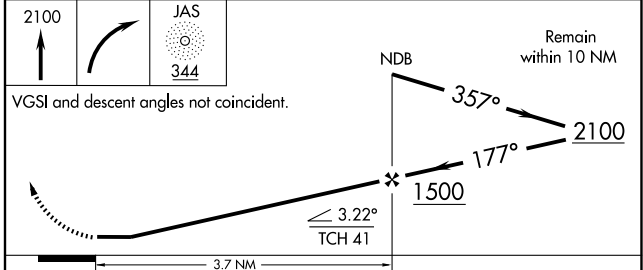
HOUSTON CENTER
126.95 363.05

UNICOM
122.8 (CTAF) **0**



SC-5, 22 OCT 2009 to 19 NOV 2009

SC-5, 22 OCT 2009 to 19 NOV 2009



CATEGORY	A	B	C	D
S-18	740-1 527 (600-1)		740-1½ 527 (600-1½)	NA
CIRCLING	740-1 527 (600-1)		740-1½ 527 (600-1½)	NA

MIRL Rwy 18-36 **0**

FAF to MAP 3.7 NM

Knots	60	90	120	150	180
Min:Sec	3:42	2:28	1:51	1:29	1:14