

SAVANNAH, TENNESSEE

AL-5771 (FAA)

RNAV (GPS) RWY 19

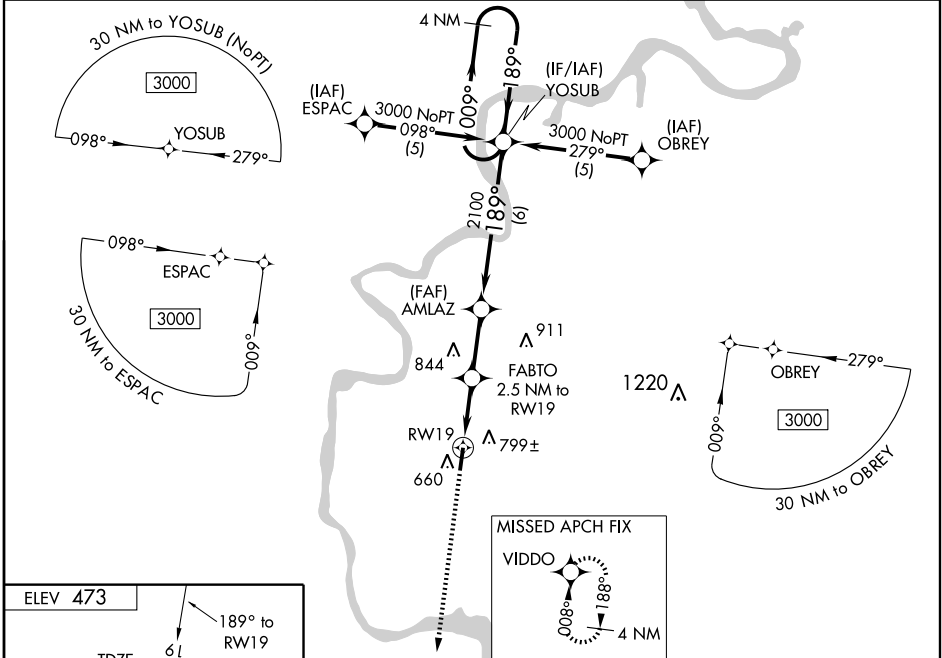
SAVANNAH-HARDIN COUNTY (SNH)

| | | |
|--|------------------------|---|
| WAAS CH 42912 W19A | APP CRS 189° | Rwy Idg 5000 TDZE 467 Apt Elev 473 |
|--|------------------------|---|

⚠ Baro-VNAV NA when using Muscle Shoals altimeter setting. For uncompensated Baro-VNAV systems, LNAV/VNAV NA below -15° C (5° F) or above 54° C (130° F). DME/DME RNP-0.3 NA. Visibility reduction by helicopters NA. When local altimeter setting not received use Muscle Shoals, AL altimeter setting and increase all DA 102 feet and all MDA 120 feet and increase LPV visibility all Cats ½ mile, LNAV/VNAV visibility all Cats ¼ mile, LNAV Cat. C visibility ½ mile, Circling Cat. B visibility ¼ mile and Circling Cat. C visibility ½ mile.

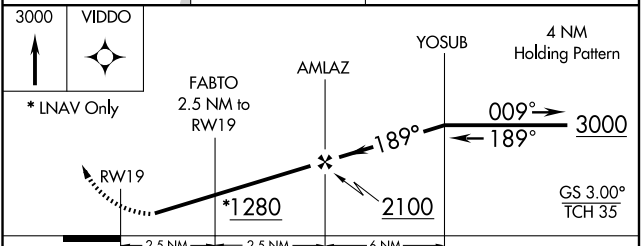
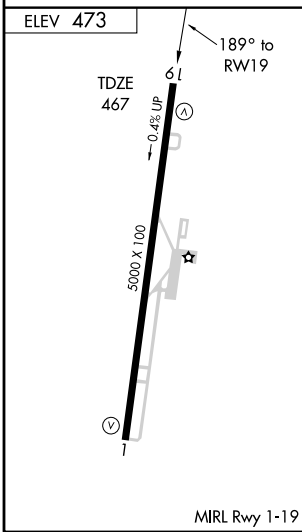
MISSED APPROACH:
Climb to 3000 direct VIDDO and hold.

| | | |
|--------------------------|---------------------------------------|-------------------------------|
| AWOS-3 133.925 | MEMPHIS CENTER 124.35 239.3 | UNICOM 122.8 (CTAF) |
|--------------------------|---------------------------------------|-------------------------------|



SE-1, 22 OCT 2009 to 19 NOV 2009

SE-1, 22 OCT 2009 to 19 NOV 2009



| CATEGORY | A | B | C | D |
|--------------|--------|-------------|-------------------------|----|
| LPV DA | 873-1½ | | 406 (400-1½) | NA |
| LNAV/VNAV DA | 999-2 | | 532 (600-1) | NA |
| LNAV MDA | 1060-1 | 593 (600-1) | 1060-1½ 593 (600-1½) | NA |
| CIRCLING | 1100-1 | 627 (700-1) | 1100-1¾ 627 (700-1¾) | NA |

SAVANNAH, TENNESSEE
Orig 09183

35° 10'N-88° 13'W

RNAV (GPS) RWY 19