

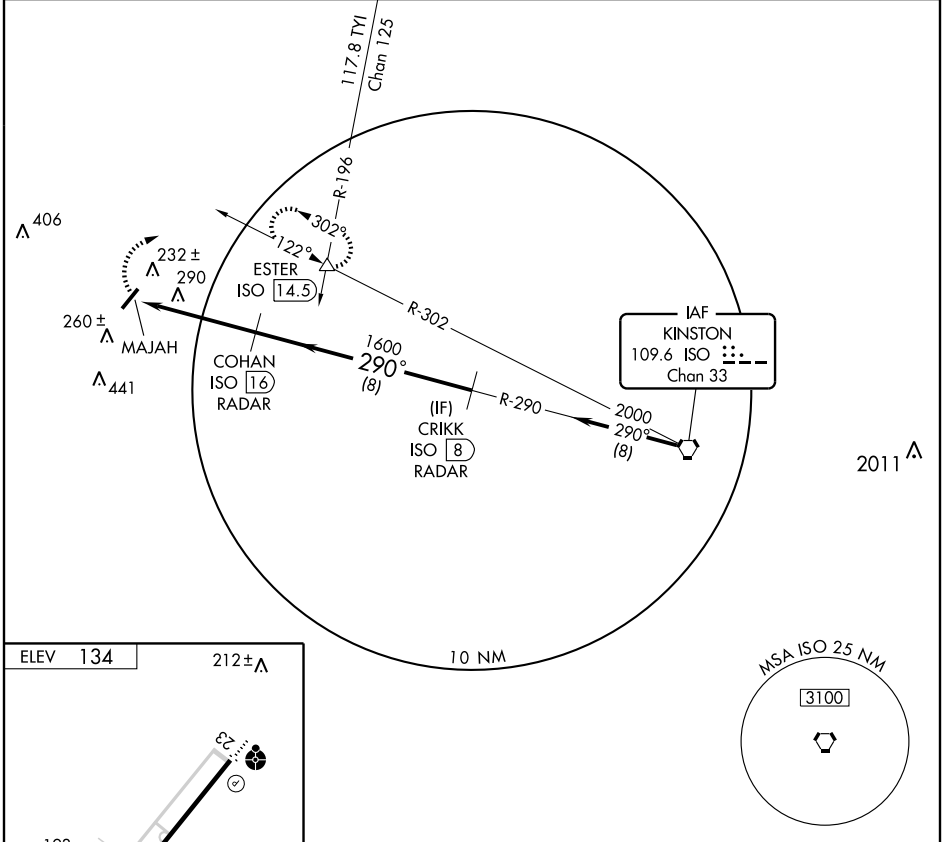
VORTAC ISO 109.6 Chan 33	APP CRS 290°	Rwy Idg TDZE Apt Elev N/A N/A 134
--	------------------------	---

VOR-A
GOLDSBORO-WAYNE MUNI (GWW)

⚠ If local altimeter setting not received, use Smithfield altimeter setting and increase all MDAs 60 feet.
⚠ **RADAR or DME REQUIRED.**

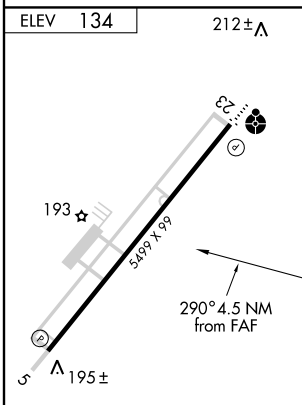
MISSED APPROACH: Climbing right turn to 2000 via heading 050° and ISO R-302 to ESTER Int and hold.

AWOS-3 118.975	SEYMOUR JOHNSON APP CON 123.7 290.9	UNICOM 122.7 (CTAF) 0
--------------------------	---	---------------------------------



SE-2, 22 OCT 2009 to 19 NOV 2009

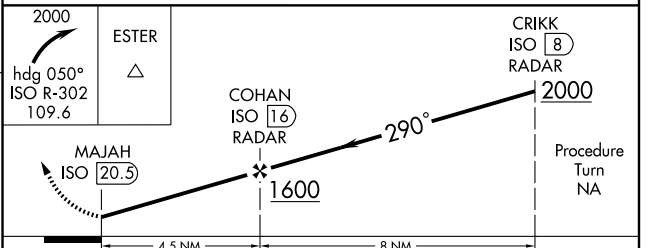
SE-2, 22 OCT 2009 to 19 NOV 2009



MIRL Rwy 5-23 **0**
REIL Rwy 23 **0**

FAF to MAP 4.5 NM

Knots	60	90	120	150	180
Min:Sec	4:30	3:00	2:15	1:48	1:30



CATEGORY	A	B	C	D
CIRCLING	540-1 406 (500-1)	600-1½ 466 (500-1½)	600-1½ 466 (500-1½)	700-2 566 (600-2)