

GOLDSBORO, NORTH CAROLINA

AL-5770 (FAA)

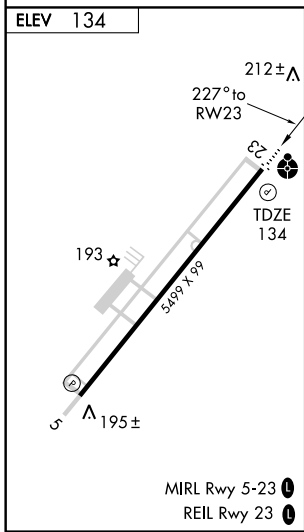
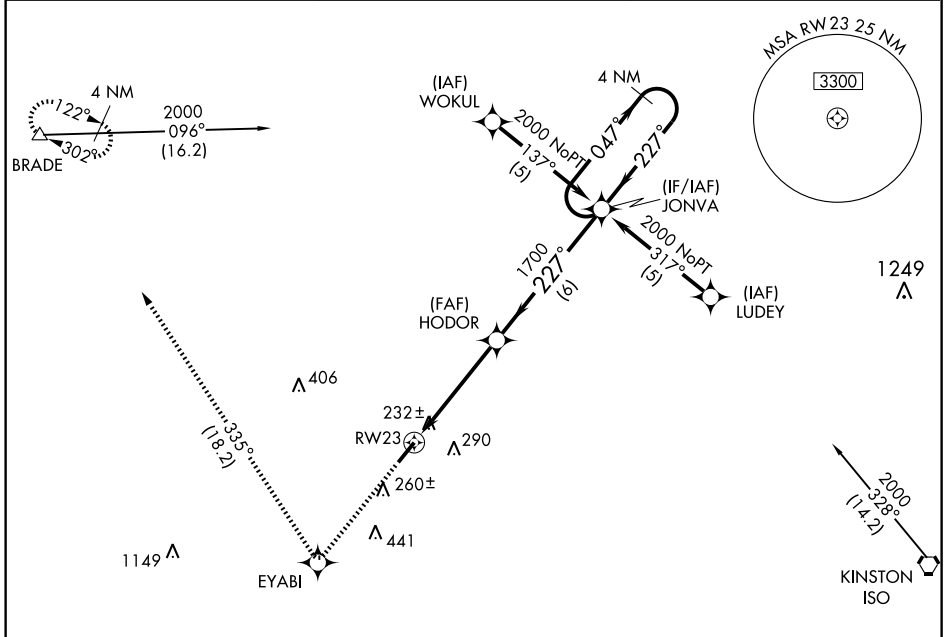
RNAV (GPS) RWY 23

GOLDSBORO-WAYNE MUNI (GWW)

| | | | |
|--|------------------------|---|-------------|
| WAAS CH 70320 W23A | APP CRS 227° | Rwy ldg TDZE 134 Apt Elev 134 | 5499 |
|--|------------------------|---|-------------|

| | | |
|---|-------------------|---|
| <p>▽ DME/DME RNP-0.3 NA. △ If local altimeter setting not received, use Smithfield altimeter setting and increase DA to 510 feet; increase all MDAs 60 feet. Inoperative table does not apply to LPV.</p> | <p>ODALS </p> | <p>MISSED APPROACH: Climb to 2000 direct EYABI and right turn via 335° track to BRADE and hold.</p> |
|---|-------------------|---|

| | | |
|----------------------------------|---|--|
| <p>AWOS-3 118.975</p> | <p>SEYMOUR JOHNSON APP CON 123.7 290.9</p> | <p>UNICOM 122.7 (CTAF) </p> |
|----------------------------------|---|--|



| | | | | |
|---|-----------------------|-------------------|---------------------------|-------------------|
| 2000 | EYABI | BRADE | 4 NM Holding Pattern | |
| | | | | |
| VGSi and RNAV glidepath not coincident. | | | | |
| RWY 23 | | HODOR | JONVA | |
| 4.7 NM | | 6 NM | 2000 | |
| 227° | | 1700 | 047° | |
| 227° | | GS 3.00° TCH 51 | | |
| CATEGORY | A | B | C | D |
| LPV DA | 450-1 316 (400-1) | | | |
| LNAV/VNAV DA | NA | | | |
| LNAV MDA | 500-3/4 366 (400-3/4) | | 500-1/4 366 (400-1/4) | |
| CIRCLING | 540-1 406 (500-1) | 600-1 466 (500-1) | 600-1 1/2 466 (500-1 1/2) | 700-2 566 (600-2) |

GOLDSBORO, NORTH CAROLINA
Orig 09295

35°28'N-77°58'W

GOLDSBORO-WAYNE MUNI (GWW)
RNAV (GPS) RWY 23

SE-2, 22 OCT 2009 to 19 NOV 2009

SE-2, 22 OCT 2009 to 19 NOV 2009