

GOLDSBORO, NORTH CAROLINA

AL-5770 (FAA)

LOC I-UGZ 111.9	APP CRS 227°	Rwy Idg TDZE Apt Elev	5499 134 134
---------------------------	------------------------	-----------------------------	---

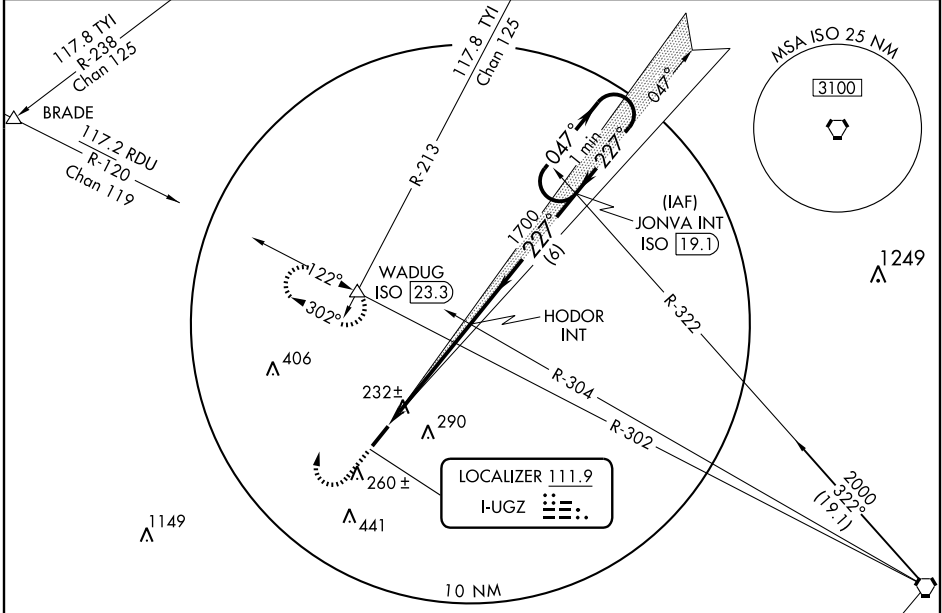
ILS or LOC RWY 23

GOLDSBORO-WAYNE MUNI (GWW)

NA If local altimeter setting not received, use Smithfield altimeter setting and increase DA to 390 feet; increase all MDAs 60 feet.

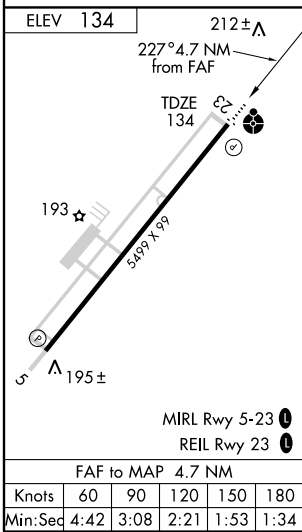
ODALS MISSED APPROACH: Climb to 900 then climbing right turn to 2000 via heading 040° and ISO R-302 to WADUG INT/ISO 23.3 DME and hold.

AWOS-3 118.975	SEYMOUR JOHNSON APP CON 123.7 290.9	UNICOM 122.7 (CTAF)
--------------------------	---	-------------------------------



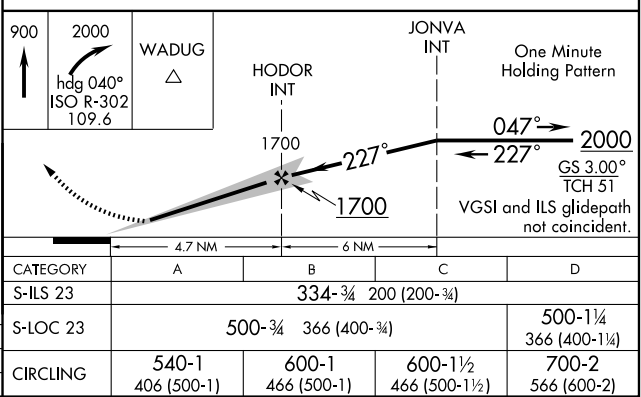
SE-2, 22 OCT 2009 to 19 NOV 2009

SE-2, 22 OCT 2009 to 19 NOV 2009



GOLDSBORO, NORTH CAROLINA
Amdt 1A 09295

RADAR or DME REQUIRED



35° 28' N - 77° 58' W

GOLDSBORO-WAYNE MUNI (GWW)
ILS or LOC RWY 23