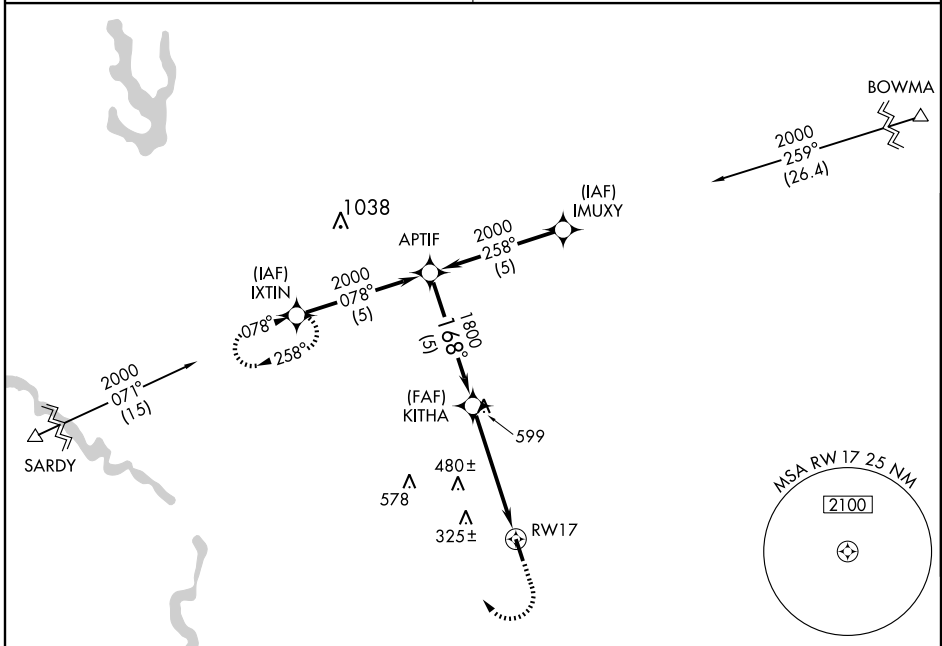


GPS RWY 17

ALLENDALE COUNTY (88J)

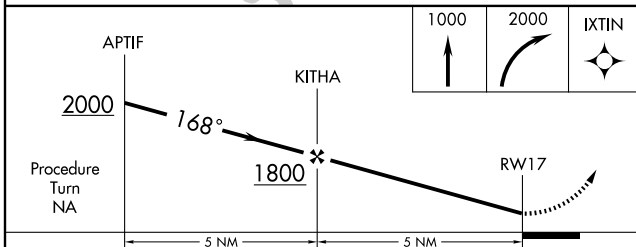
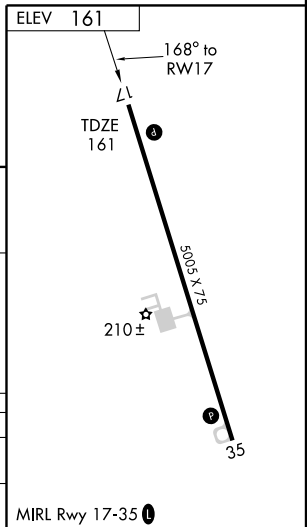
APP CRS	Rwy Idg	5005
168°	TDZE	161
	Apt Elev	161

▲ NA Use Augusta, Ga. altimeter setting.	MISSED APPROACH: Climb to 1000 then climbing right turn to 2000 direct IXTIN WP and hold.
JACKSONVILLE CENTER 132.5 363.2	UNICOM 122.8 (CTAF) 0



SE-2, 22 OCT 2009 to 19 NOV 2009

SE-2, 22 OCT 2009 to 19 NOV 2009



CATEGORY	A	B	C	D
S-17	700-1	539 (600-1)	700-1½ 539 (600-1½)	700-1¾ 539 (600-1¾)
CIRCLING	700-1	539 (600-1)	700-1½ 539 (600-1½)	780-2 619 (700-2)