

HUNTINGTON, INDIANA

AL-5767 (FAA)

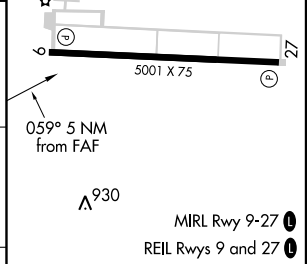
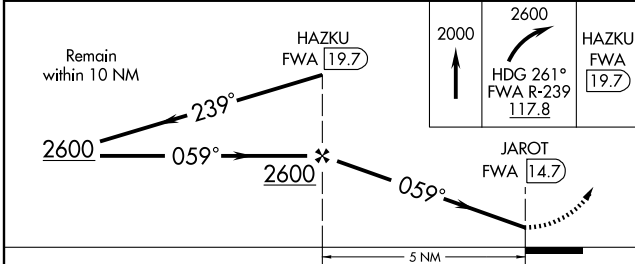
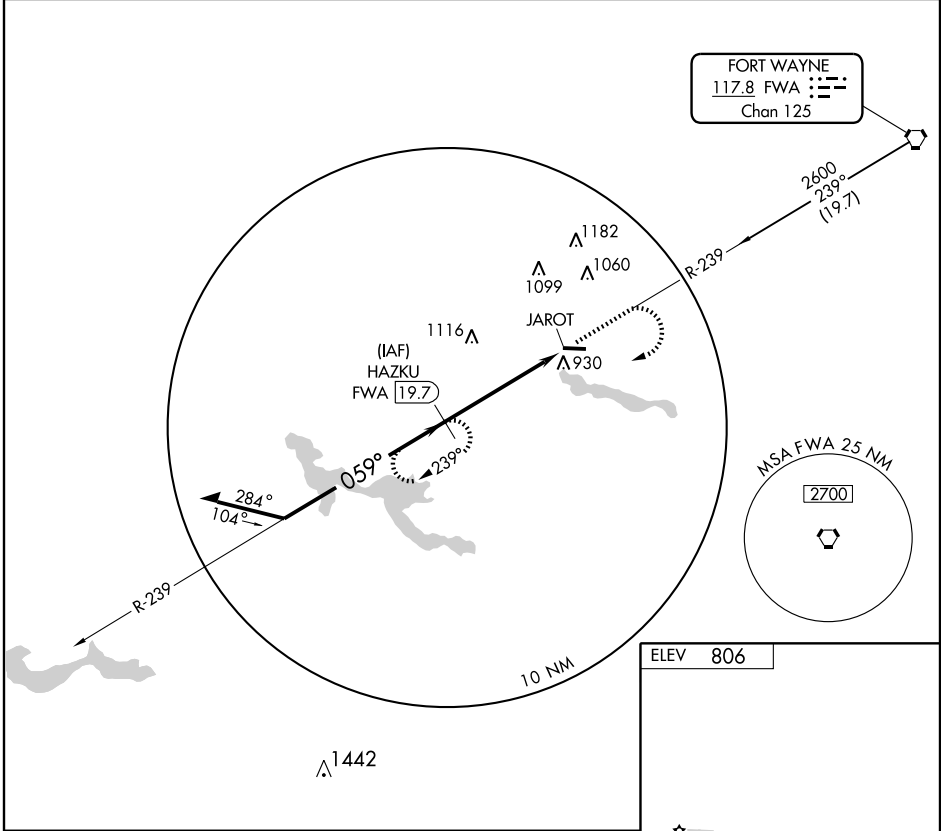
VORTAC FWA <b>117.8</b> Chan <b>125</b>	APP CRS <b>059°</b>	Rwy Idg TDZE Apt Elev <b>N/A</b> <b>N/A</b> <b>806</b>
---	------------------------	---

# VOR/DME-A

HUNTINGTON MUNI (HHG)

<p>Use Fort Wayne altimeter setting.</p>	<p>MISSED APPROACH: Climb to 2000 then climbing right turn to 2600 via heading 261° and FWA R-239 to HAZKU/19.73 DME and hold.</p>
--	--

<p>FORT WAYNE APP CON <b>127.2 284.6</b></p>	<p>UNICOM <b>122.8 (CTAF) 0</b></p>
--	---



CATEGORY	A	B	C	D	Knots	60	90	120	150	180
CIRCLING	1420-1 614 (700-1)		1420-1 3/4 614 (700-1 3/4)	1420-2 614 (700-2)	Min:Sec					

HUNTINGTON, INDIANA  
Amdt 1 05020

40°51'N - 85°27'W

# HUNTINGTON MUNI (HHG)

## VOR/DME-A

EC-2, 22 OCT 2009 to 19 NOV 2009

EC-2, 22 OCT 2009 to 19 NOV 2009