

RNAV (GPS) RWY 32

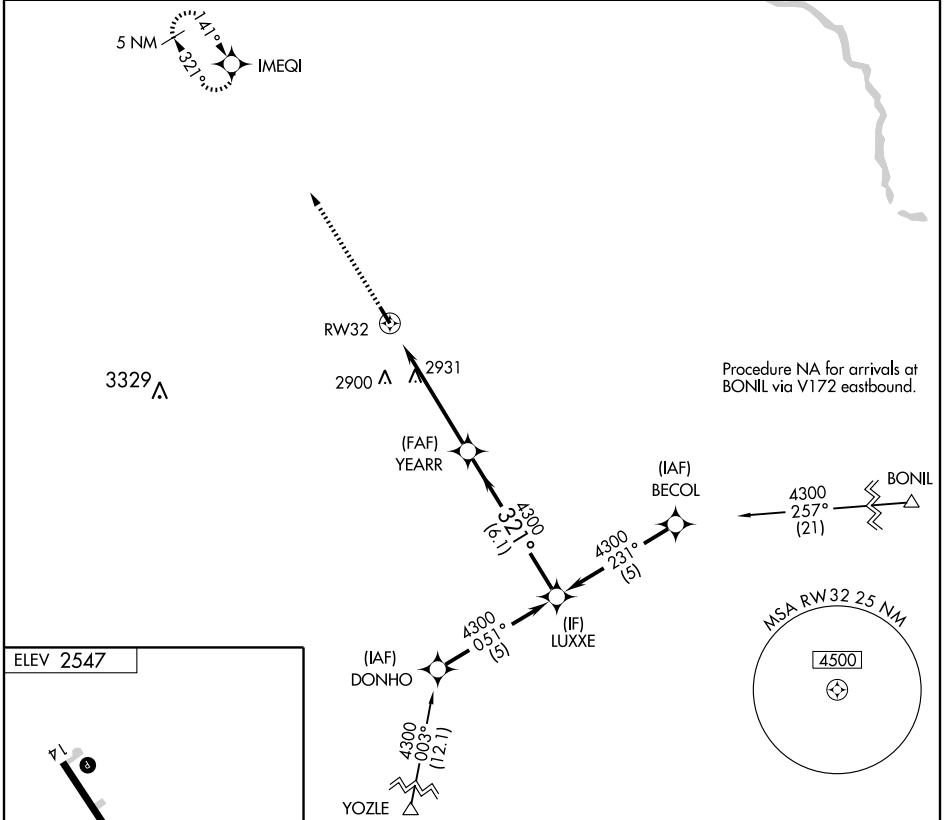
BROKEN BOW MUNI (BBW)

WAAS CH 97409 W32A	APP CRS 321°	Rwy Idg TDZE Apt Elev	4203 2534 2547
--	------------------------	-----------------------------	---

⚠ For uncompensated Baro-VNAV systems, LNAV/VNAV NA below -20°C (-4°F) or above 54°C (130°F). When local altimeter setting not received, use North Platte Rgnl altimeter setting and increase all DA/MDA 160 feet and increase LPV all Cats visibility 3/4 mile, increase LNAV/VNAV all Cats visibility 1/4 mile, increase LNAV and Circling Cat B visibility 1/4 mile. VDP and Baro/VNAV NA when using North Platte Rgnl altimeter setting. DME/DME RNP-0.3 NA. Visibility reduction by helicopters NA.

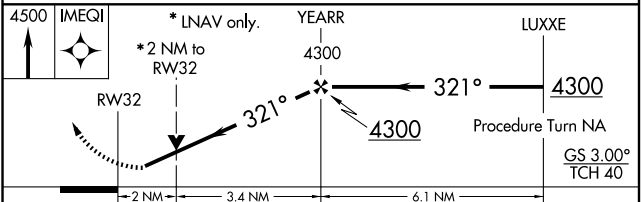
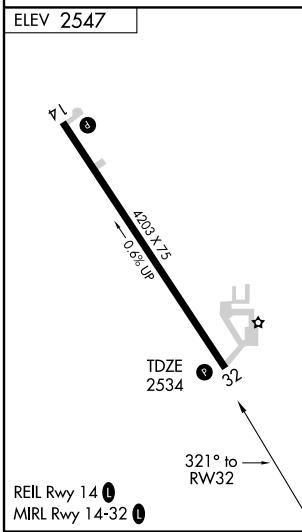
MISSED APPROACH: Climb to 4500 direct IMEQI and hold.

ASOS 120.0	DENVER CENTER 132.7 397.85	UNICOM 122.8 (CTAF)
----------------------	--------------------------------------	-------------------------------



NC-2, 22 OCT 2009 to 19 NOV 2009

NC-2, 22 OCT 2009 to 19 NOV 2009



CATEGORY	A	B	C	D
LPV DA	2833-1	299 (300-1)		NA
LNAV/VNAV DA	3301-2 3/4	767 (800-2 3/4)		NA
LNAV MDA	3200-1	666 (700-1)		NA
CIRCLING	3200-1	653 (700-1)		NA