

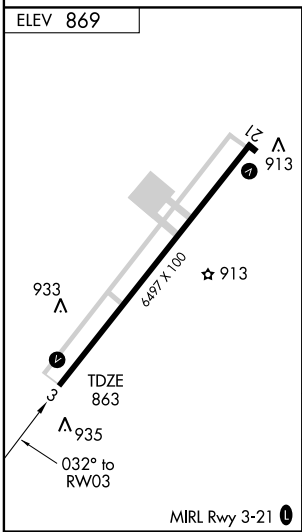
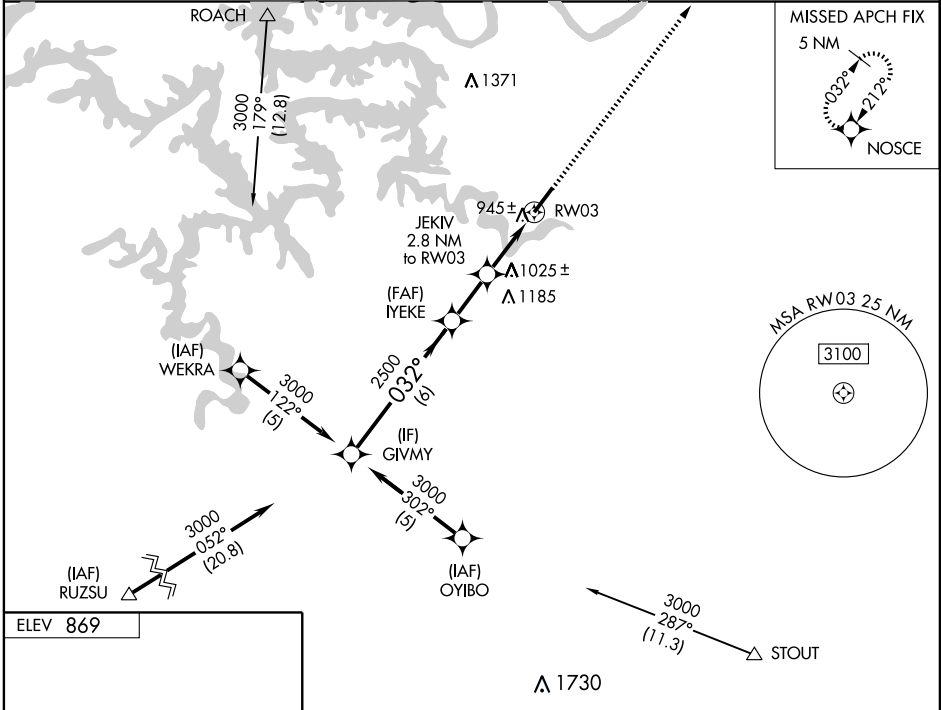
**RNAV (GPS) RWY 3**  
KAISER/LEE C FINE MEMORIAL (AIZ)

WAAS CH <b>65901</b> <b>W03A</b>	APP CRS <b>032°</b>	Rwy Idg TDZE <b>863</b> Apt Elev <b>869</b>	<b>6497</b>
--	------------------------	---	-------------

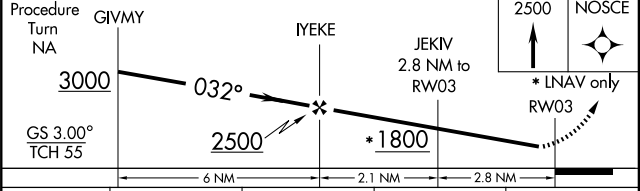
**⚠** DME/DME RNP-0.3 NA. Visibility reduction by helicopters NA.  
**⚠** For uncompensated Baro-VNAV systems, LNAV/VNAV NA below -16°C (4°F) or above 95°C (203°F).  
 If local altimeter setting not received, use Rolla/Vichy altimeter setting and increase all MDAs 140 feet. Baro-VNAV NA when using Rolla/Vichy altimeter setting.  
 When VGSI inoperative, straight-in/circling Rwy 3 NA at night.

MISSED APPROACH: Climb to 2500 direct NOSCE and hold.

AWOS-3 <b>135.325</b>	MIZZU APP CON <b>124.1 353.7</b>	UNICOM <b>122.8</b> (CTAF) <b>📻</b>
--------------------------	-------------------------------------	--



Procedure NA for arrivals at Stout via V14-88 northeast bound.



CATEGORY	A	B	C	D
LPV DA	1142-1	279 (300-1)		NA
LNAV/VNAV DA	1214-1¼	351 (400-1¼)		NA
LNAV MDA	1280-1	417 (500-1)	1280-1¼ 417 (500-1¼)	NA
CIRCLING	1400-1¼	531 (600-1¼)	1440-1½ 571 (600-1½)	NA

NC-3, 22 OCT 2009 to 19 NOV 2009

NC-3, 22 OCT 2009 to 19 NOV 2009