

SANDUSKY TWO DEPARTURE

EC-2, 22 OCT 2009 to 19 NOV 2009

CLEVELAND DEP CON
125.35 346.325

DEPARTURE ROUTE DESCRIPTION

TAKE-OFF RUNWAYS 1, 9, 19, 27: Climb via assigned heading to 3000 thence

. or assigned altitude for vectors to intercept the DJB VOR/DME R-287 to SKY VOR/DME. Expect filed altitude/flight level ten (10) minutes after departure.

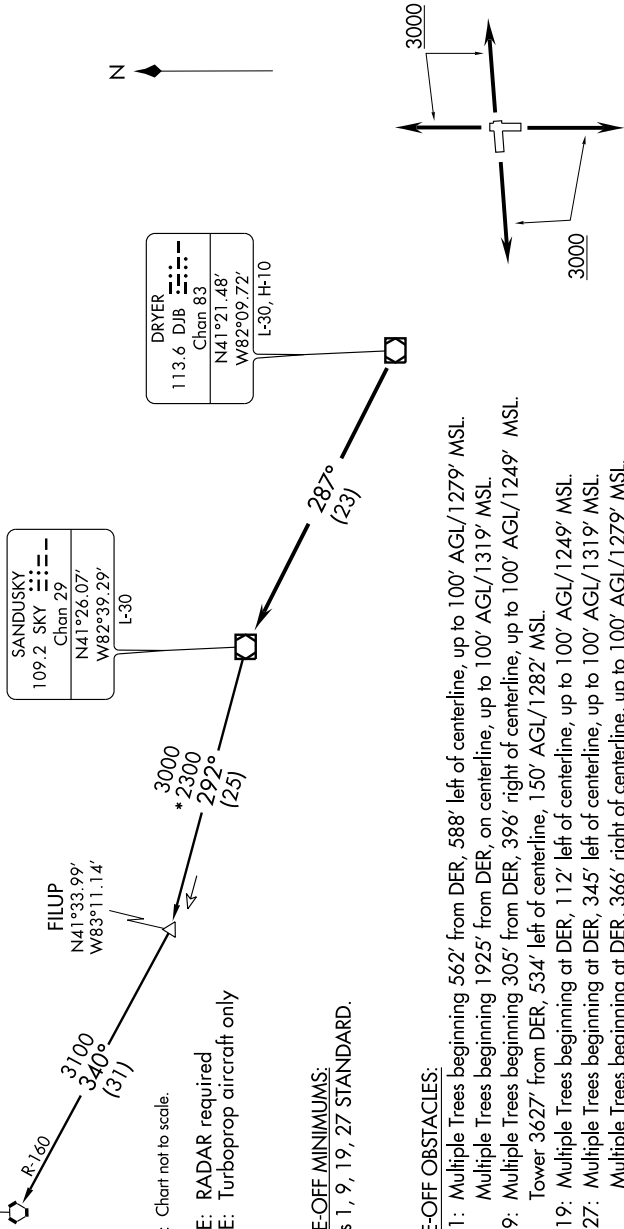
CARLETON TRANSITION (SKY2_CRL): From over SKY VOR/DME via SKY R-292 to FILLUP INT, then via CRL R-160 to CRL VORTAC.

CARLETON 115.7 CRL	⋯⋯⋯
Chan. 104	⋯⋯⋯
N42°02.89'	
W83°27.46'	
L-28, H+10	

SANDUSKY 109.2 SKY	⋯⋯⋯
Chan 29	⋯⋯⋯
N41°26.07'	
W82°39.29'	
L-30	

DRYER 113.6 DJB	⋯⋯⋯
Chan 83	⋯⋯⋯
N41°21.48'	
W82°09.72'	
L-30, H+10	

FILLUP N41°33.99'	
W83°11.14'	



NOTE: Chart not to scale.

NOTE: RADAR required

NOTE: Turboprop aircraft only

TAKE-OFF MINIMUMS:
Rwys 1, 9, 19, 27 STANDARD.

TAKE-OFF OBSTACLES:

Rwy 1: Multiple Trees beginning 562' from DER, 588' left of centerline, up to 100' AGL/1279' MSL.
Multiple Trees beginning 1925' from DER, on centerline, up to 100' AGL/1319' MSL.

Rwy 9: Multiple Trees beginning 305' from DER, 396' right of centerline, up to 100' AGL/1249' MSL.
Tower 3627' from DER, 534' left of centerline, 150' AGL/1282' MSL.

Rwy 19: Multiple Trees beginning at DER, 112' left of centerline, up to 100' AGL/1249' MSL.

Rwy 27: Multiple Trees beginning at DER, 345' left of centerline, up to 100' AGL/1319' MSL.
Multiple Trees beginning at DER, 366' right of centerline, up to 100' AGL/1279' MSL.

SANDUSKY TWO DEPARTURE

EC-2, 22 OCT 2009 to 19 NOV 2009