

# RNAV (GPS) RWY 9

MEDINA MUNI (1G5)

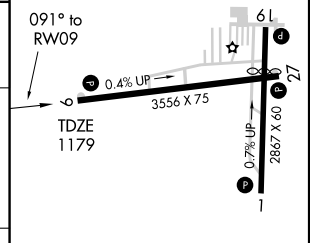
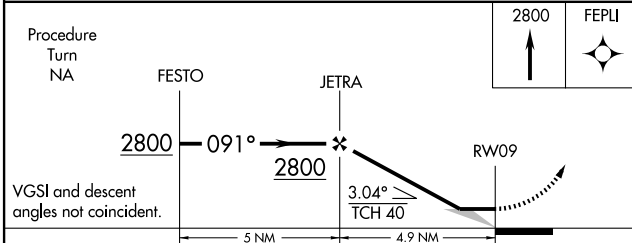
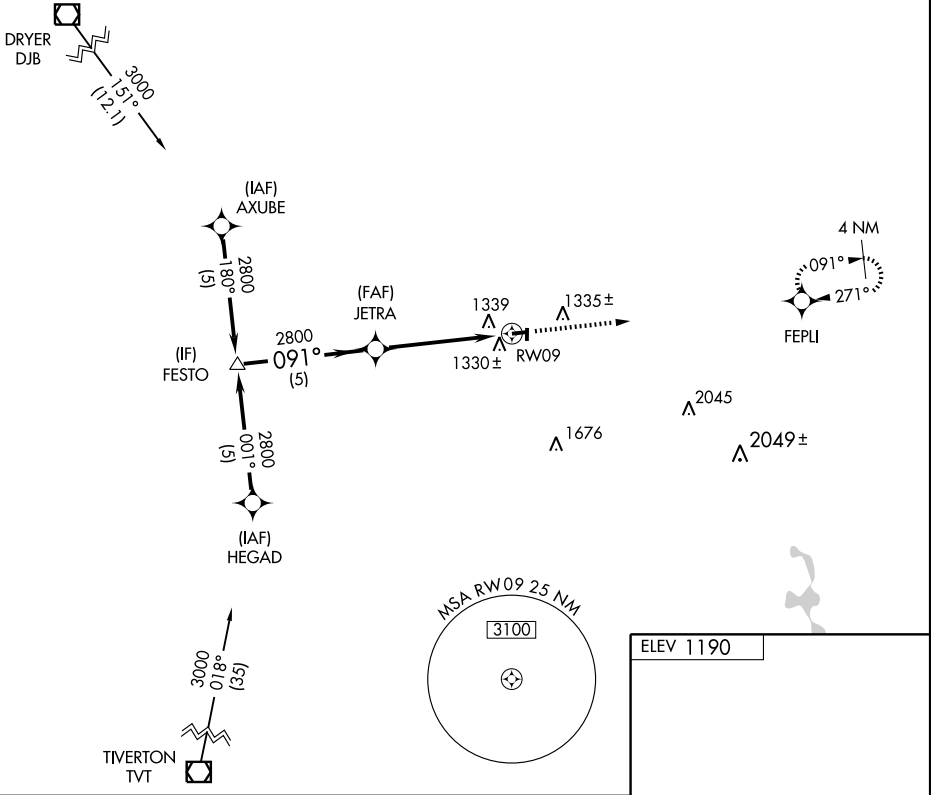
APP CRS <b>091°</b>	Rwy Idg <b>3556</b>
	TDZE <b>1179</b>
	Apt Elev <b>1190</b>

<p><b>▼</b> Use Cleveland-Hopkins altimeter setting.</p> <p><b>▲</b> NA DME/DME RNP-0.3 NA.</p>	<p>MISSED APPROACH: Climb to 2800 direct FEPLI WP and hold.</p>
---	---

<p>CLEVELAND APP CON</p> <p><b>125.35 354.025</b></p>	<p>UNICOM</p> <p><b>123.0 (CTAF) 1</b></p>
---	--

EC-2, 22 OCT 2009 to 19 NOV 2009

EC-2, 22 OCT 2009 to 19 NOV 2009



CATEGORY	A	B	C	D
LNAV MDA	1700-1	521 (600-1)	1700-1½ 521 (600-1½)	NA
CIRCLING	1740-1	550 (600-1)	1740-1½ 550 (600-1½)	NA

REIL Rwy 27  
MIRL Rwy 9-27, 1-19 1