

HARLAN, IOWA

AL-5762 (FAA)

# GPS RWY 33

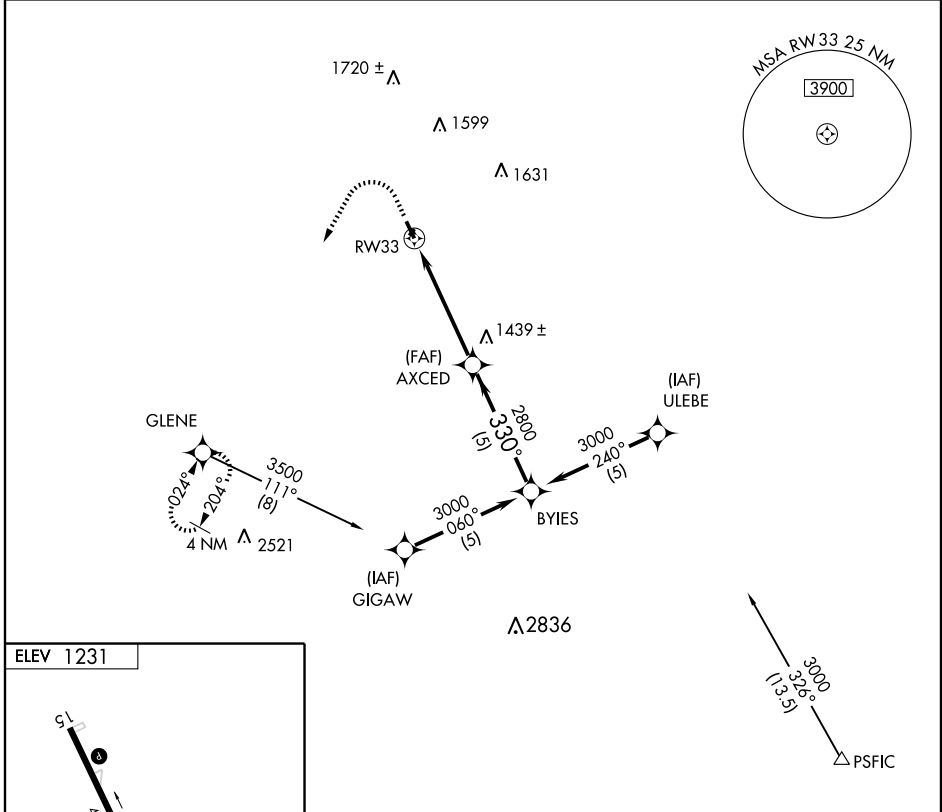
HARLAN MUNI (HNR)

APP CRS	Rwy Idg	<b>4100</b>
<b>330°</b>	TDZE	<b>1215</b>
	Apt Elev	<b>1231</b>

**▽**  
**△** NA

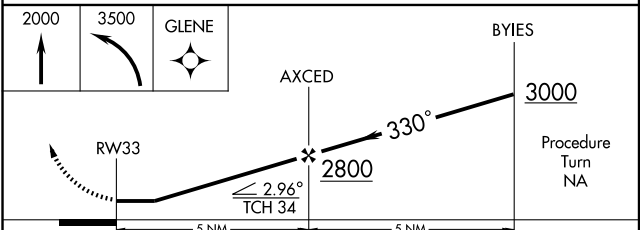
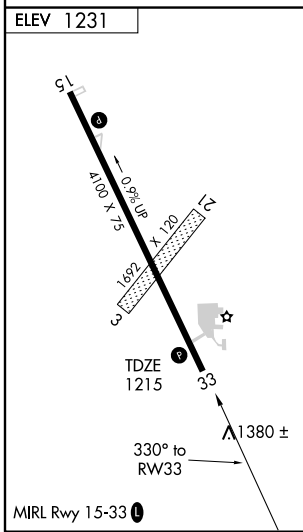
MISSED APPROACH: Climb to 2000, then climbing left turn to 3500 direct GLENE WP and hold.

AWOS-3 <b>118.325</b>	OMAHA APP CON <b>124.5 263.0</b>	UNICOM <b>122.8</b> (CTAF) <b>0</b>
--------------------------	-------------------------------------	----------------------------------------



NC-3, 22 OCT 2009 to 19 NOV 2009

NC-3, 22 OCT 2009 to 19 NOV 2009



CATEGORY	A	B	C	D
S-33	1640-1	425 (500-1)		NA
CIRCLING	1780-1	549 (600-1)		NA

HARLAN, IOWA  
Orig 09127

41°35'N - 95°20'W

# HARLAN MUNI (HNR)

## GPS RWY 33