

# VOR or TACAN RWY 35

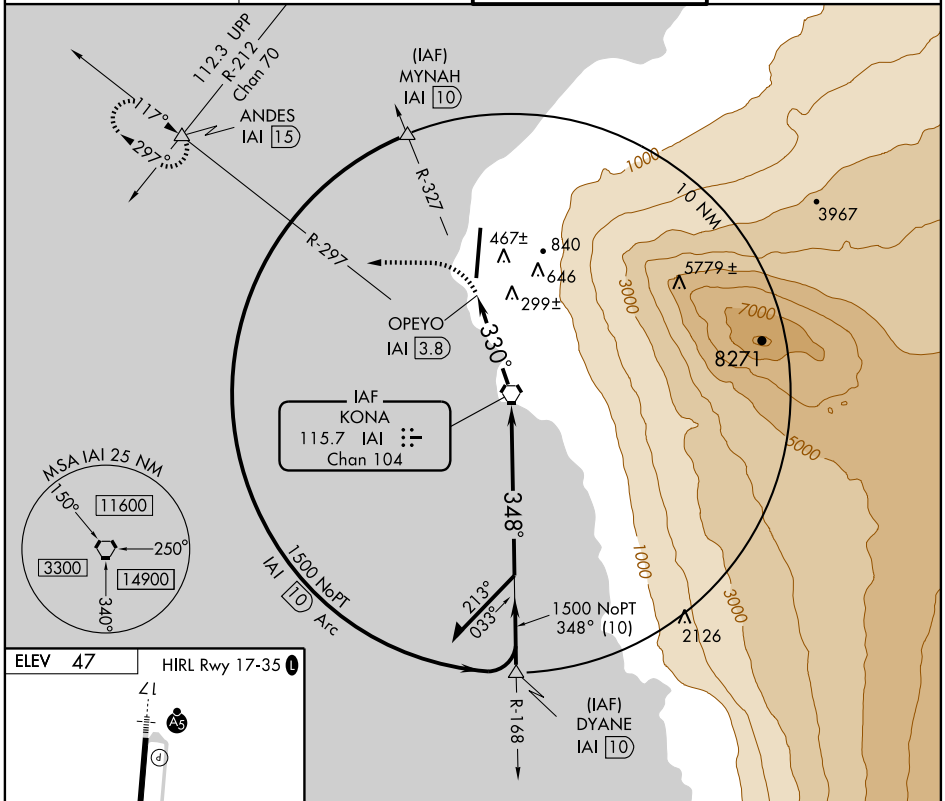
VORTAC IAI <b>115.7</b>	APP CRS <b>330°</b>	Rwy Idg <b>11000</b>
Chan <b>104</b>	TDZE <b>37</b>	Apt Elev <b>47</b>

KAILUA-KONA/ KONA INTL AT KEAHOLE (KOA) (PHKO)

**⚠** Circling not authorized east of Rwy 17-35. Procedure turn not authorized for Cat. E aircraft.

MISSED APPROACH: Climbing left turn to 1500 via IAI R-297 to ANDES Int/IAI 15 DME and hold.

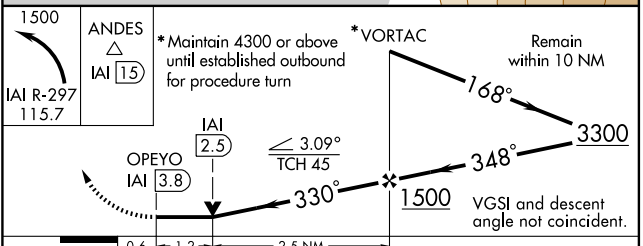
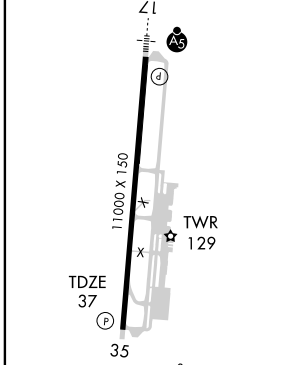
ATIS <b>127.4</b>	HCF APPROACH <b>126.0 278.3</b>	KONA TOWER ★ <b>120.3 (CTAF) 0 254.3</b>	CLNC DEL <b>121.9</b>
----------------------	------------------------------------	---	--------------------------



PAC, 22 OCT 2009 to 17 DEC 2009

PAC, 22 OCT 2009 to 17 DEC 2009

ELEV 47	HIRL Rwy 17-35
---------	----------------



FAF to MAP 3.8 NM					
Knots	60	90	120	150	180
Min:Sec	3:48	2:32	1:54	1:31	1:16
CATEGORY	A	B	C	D	E
S-35	560-1	523 (600-1)	560-1½ 523 (600-1½)	560-1¾	523 (600-1¾)
CIRCLING	560-1	513 (600-1)	560-1½ 513 (600-1½)	600-2	553 (600-2)