

TITUSVILLE, FLORIDA

AL-5760 (FAA)

# RNAV (GPS) Z RWY 9

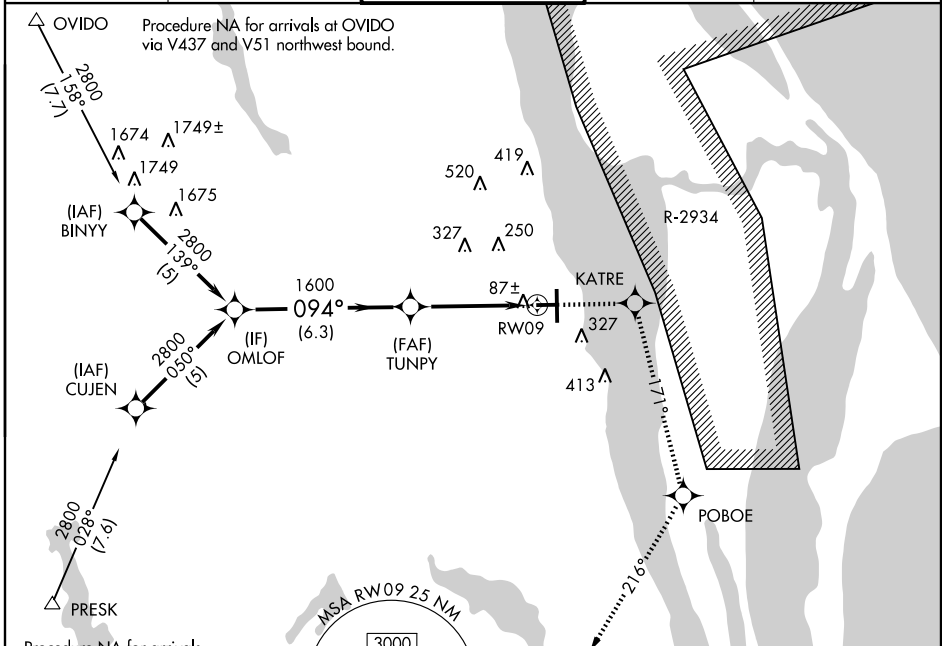
TITUSVILLE/ SPACE COAST RGNL (TIX)

WAAS CH <b>45713</b> <b>W09A</b>	APP CRS <b>094°</b>	Rwy Idg TDZE Apt Elev	<b>4810</b> <b>32</b> <b>34</b>
--	------------------------	-----------------------------	---------------------------------------

**W** DME/DME RNP-0.3 NA.  
**A** NA Visibility reduction by helicopters NA.  
 When control tower closed, use Melbourne altimeter setting.

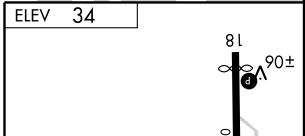
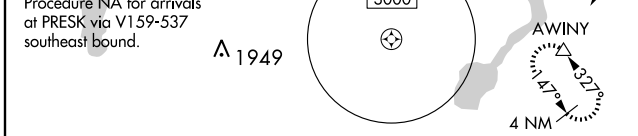
MISSED APPROACH: Climb to 3000 direct KATRE and via track 171° to POBOE and right turn via track 216° to AWINY and hold.

ATIS <b>120.625</b>	ORLANDO APP CON <b>134.95 281.425</b>	SPACE COAST TOWER * <b>118.9 (CTAF) 0</b>	GND CON <b>121.85</b>	UNICOM <b>122.95</b>
------------------------	--	--	--------------------------	-------------------------



SE-3, 22 OCT 2009 to 19 NOV 2009

SE-3, 22 OCT 2009 to 19 NOV 2009



Procedure Turn NA	OMLOF	3000	KATRE	trk 171°	POBOE	trk 216°	AWINY
GS 3.10°							
TCH 60							
CATEGORY	A	B	C	D			
LPV DA	324-1 292 (300-1)						
MELBOURNE ALTIMETER SETTING MINIMUMS							
LPV DA	384-1¼ 352 (400-1¼)						

MIRL Rwy 9-27	0
HIRL Rwy 18-36	0
REIL Rws 9, 18, 27 and 36	0

TITUSVILLE, FLORIDA  
 Orig 09183

28° 31'N-80° 48'W

TITUSVILLE/ SPACE COAST RGNL (TIX)  
**RNAV (GPS) Z RWY 9**