

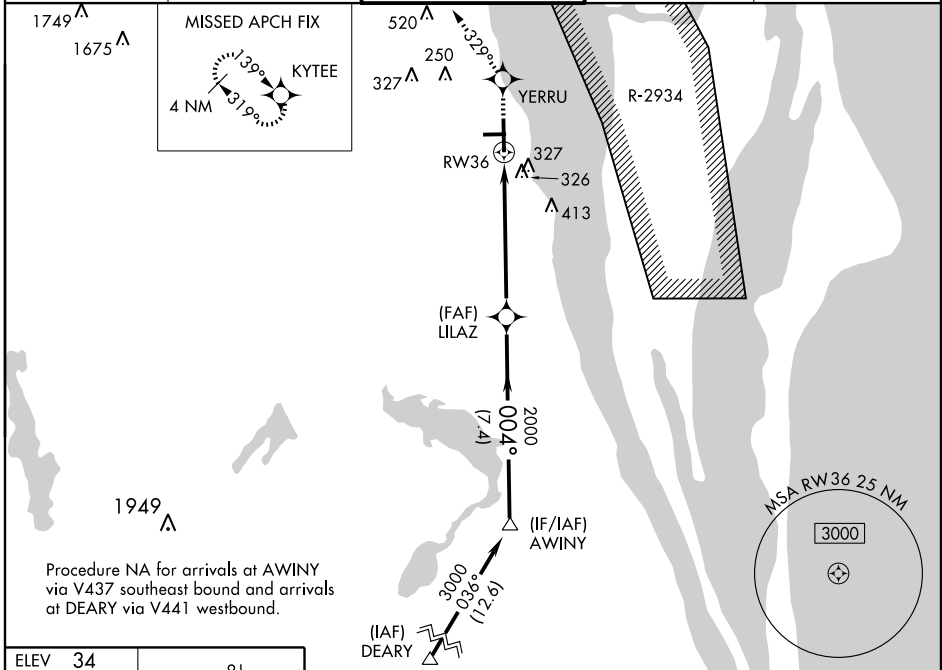
WAAS CH 69313 W36A	APP CRS 004°	Rwy Idg 7319 TDZE 34 Apt Elev 34
--	------------------------	---

RNAV (GPS) RWY 36

TITUSVILLE/ SPACE COAST RGNL (TIX)

<p>▼ DME/DME RNP-0.3 NA. ▲ When control tower closed, use Melbourne altimeter setting. VDP NA when using Melbourne altimeter setting.</p>	<p>MALSR </p>	<p>MISSED APPROACH: Climb to 1600 direct YERRU and via track 329° to KYTEE and hold.</p>
---	--------------------------	--

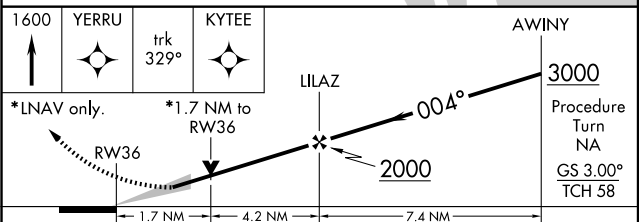
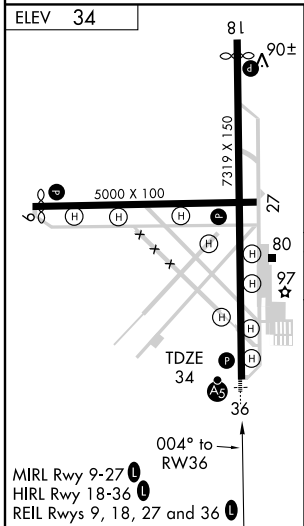
ATIS 120.625	ORLANDO APP CON 134.95 281.425	SPACE COAST TOWER * 118.9 (CTAF) 0	GND CON 121.85	UNICOM 122.95
------------------------	--	--	--------------------------	-------------------------



Procedure NA for arrivals at AWINY via V437 southeast bound and arrivals at DEARY via V441 westbound.

SE-3, 22 OCT 2009 to 19 NOV 2009

SE-3, 22 OCT 2009 to 19 NOV 2009



CATEGORY	A	B	C	D
LPV DA	234-1/2 200 (200-1/2)			
LNAV MDA	640-1/2	606 (700-1/2)	640-1 1/4 606 (700-1 1/4)	640-1 1/2 606 (700-1 1/2)
CIRCLING	640-1	606 (700-1)	640-1 3/4 606 (700-1 1/4)	640-2 606 (700-2)
MELBOURNE ALTIMETER SETTING MINIMUMS				
LPV DA	294-1/2 260 (300-1/2)			
LNAV MDA	700-1/2	666 (700-1/2)	700-1 1/4 666 (700-1 1/4)	700-1 1/2 666 (700-1 1/2)
CIRCLING	700-1	666 (700-1)	700-1 3/4 666 (700-1 1/4)	700-2 666 (700-2)