

FREMONT, NEBRASKA

AL-5759 (FAA)

# RNAV (GPS) RWY 14

FREMONT MUNI (F'ET)

WAAS CH <b>82403</b> <b>W14A</b>	APP CRS <b>135°</b>	Rwy Idg TDZE Apt Elev	<b>5500</b> <b>1203</b> <b>1204</b>
--	------------------------	-----------------------------	---

**⚠** DME/DME RNP-0.3 NA. Visibility reduction by helicopters NA. When local altimeter setting not received, use Tekamah Muni altimeter setting and increase all DAs 81 feet and MDAs 100 feet and increase LPV all Cats and circling Cat C visibility ½ mile, and LNAV visibility Cat C ¼ mile. VDP NA when using Tekamah Muni altimeter setting.

MISSED APPROACH: Climb to 3000 direct HUSIV and hold.

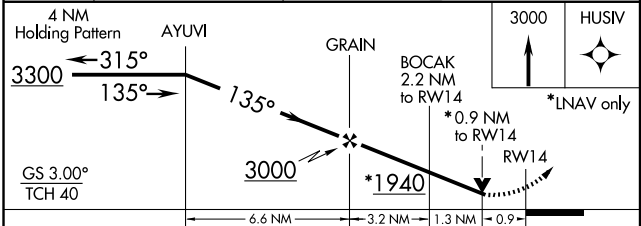
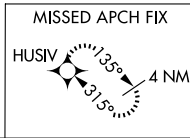
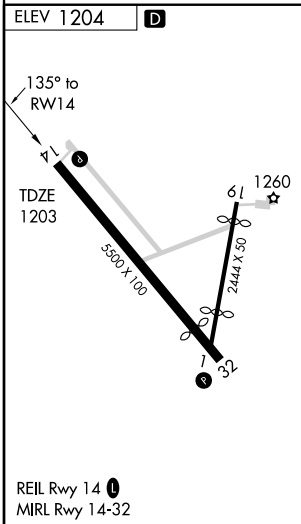
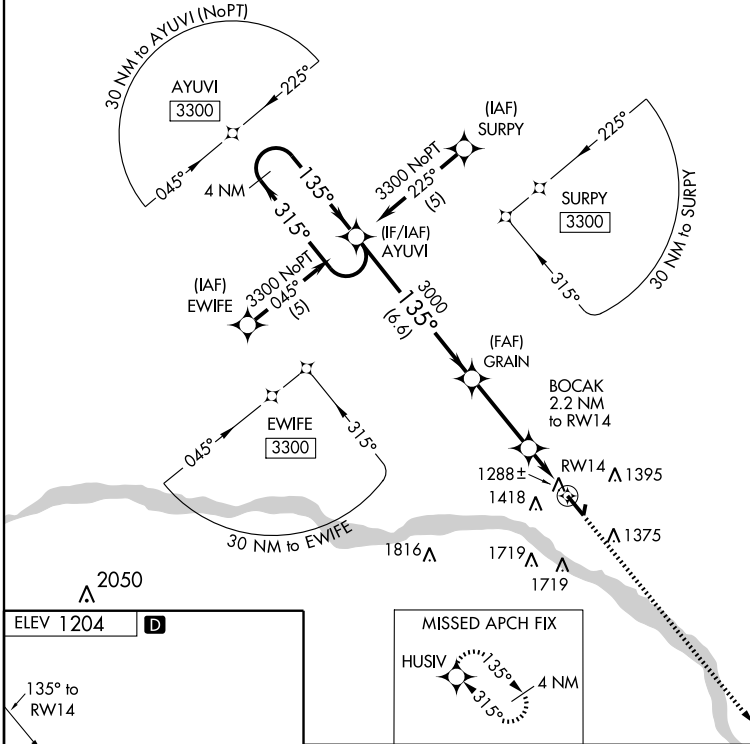
AWOS-3  
**121.275**

OMAHA APP CON  
**120.1 354.05**

UNICOM  
**122.8 (CTAF) 0**

NC-2, 22 OCT 2009 to 19 NOV 2009

NC-2, 22 OCT 2009 to 19 NOV 2009



CATEGORY	A	B	C	D
LPV DA	1515-1 312 (400-1)			NA
LNAV MDA	1540-1 337 (400-1)			NA
CIRCLING	1780-1 576 (600-1)		1780-1½ 576 (600-1½)	NA

FREMONT, NEBRASKA  
Amdt 1 08325

41°27'N-96°31'W

# RNAV (GPS) RWY 14