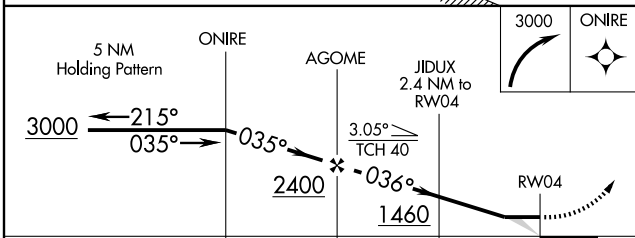
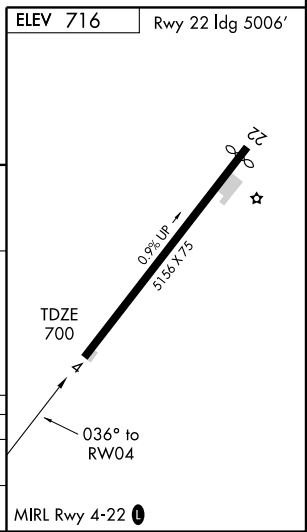
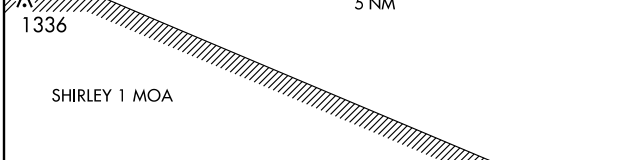
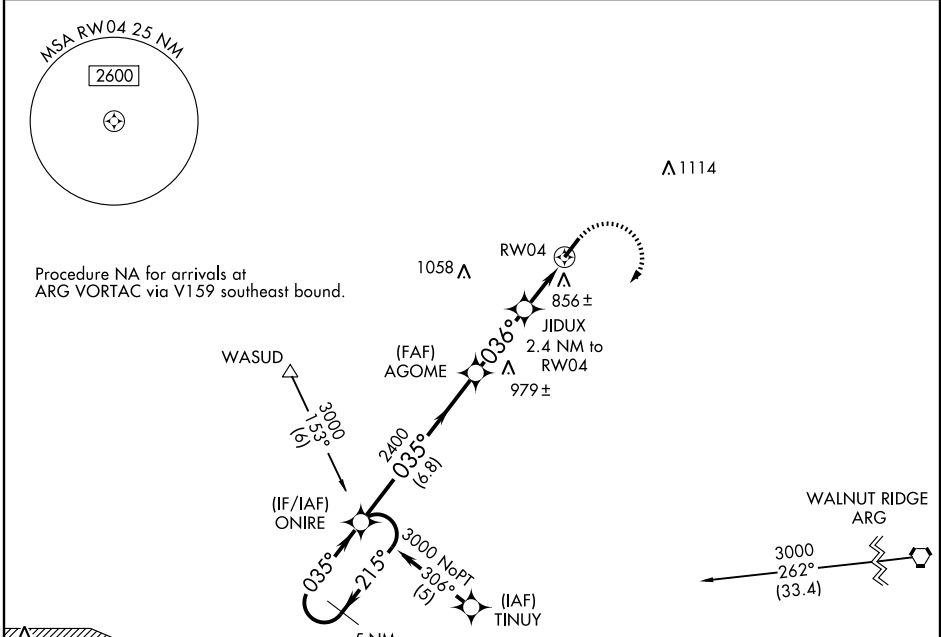


**RNAV (GPS) RWY 4**  
ASH FLAT/ SHARP COUNTY RGNL (CVK)

APP CRS	Rwy Idg	<b>5156</b>
<b>036°</b>	TDZE	<b>700</b>
	Apt Elev	<b>716</b>

<p><b>▽</b> DME/DME RNP-0.3 NA. Use Walnut Ridge altimeter setting; if not received, use Jonesboro altimeter setting and increase all MDAs 60 feet.</p> <p><b>△</b> NA</p>	<p>MISSED APPROACH: Climbing right turn to 3000 direct ONIRE and hold.</p>
--	--

<p>MEMPHIS CENTER <b>120.075 289.4</b></p>	<p>UNICOM <b>122.7 (CTAF) 0</b></p>
--	---



CATEGORY	A	B	C	D
RNAV MDA	1260-1	560 (600-1)	1260-1½ 560 (600-1½)	NA
CIRCLING	1400-1	684 (700-1)	1400-2 684 (700-2)	NA

SC-1, 22 OCT 2009 to 19 NOV 2009

SC-1, 22 OCT 2009 to 19 NOV 2009