

ASH FLAT, ARKANSAS

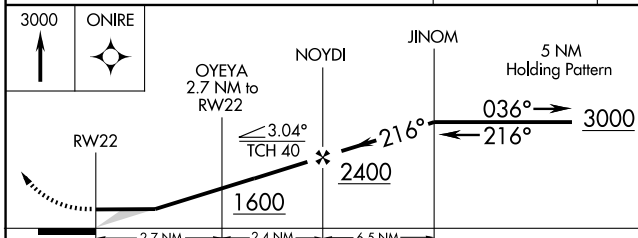
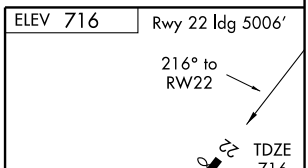
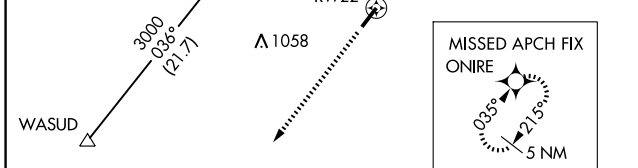
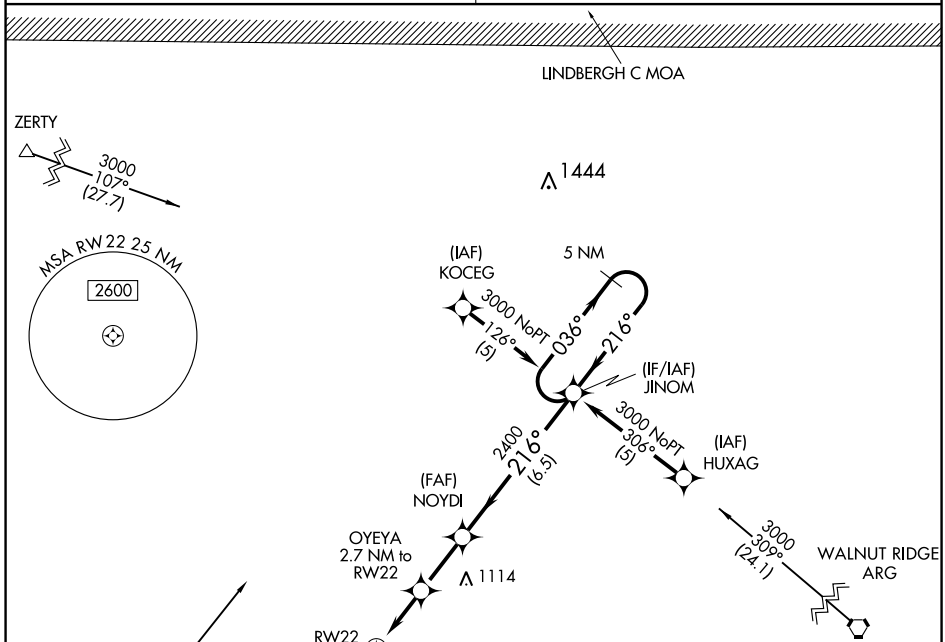
AL-5758 (FAA)

RNAV (GPS) RWY 22

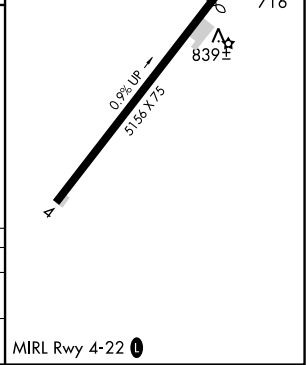
ASH FLAT/ SHARP COUNTY RGNL (CVK)

APP CRS	Rwy Idg	5006
216°	TDZE	716
	Apt Elev	716

<p>▼ DME/DME RNP-0.3 NA. Use Walnut Ridge altimeter setting; if not received, use Jonesboro altimeter setting and increase all MDAs 60 feet.</p> <p>▲ NA</p>	<p>MISSED APPROACH: Climb to 3000 direct ONIRE and hold.</p>
<p>MEMPHIS CENTER</p> <p>120.075 289.4</p>	<p>UNICOM</p> <p>122.7 (CTAF) 0</p>



CATEGORY	A	B	C	D
RNAV MDA	1360-1	644 (700-1)	1360-1 $\frac{3}{4}$ 644 (700-1 $\frac{3}{4}$)	NA
CIRCLING	1400-1	684 (700-1)	1400-2 684 (700-2)	NA



SC-1, 22 OCT 2009 to 19 NOV 2009

SC-1, 22 OCT 2009 to 19 NOV 2009

ASH FLAT, ARKANSAS
Orig 07298

36°16'N - 91°34'W

RNAV (GPS) RWY 22