

ARKADELPHIA, ARKANSAS

AL-5756 (FAA)

NDB RWY 4

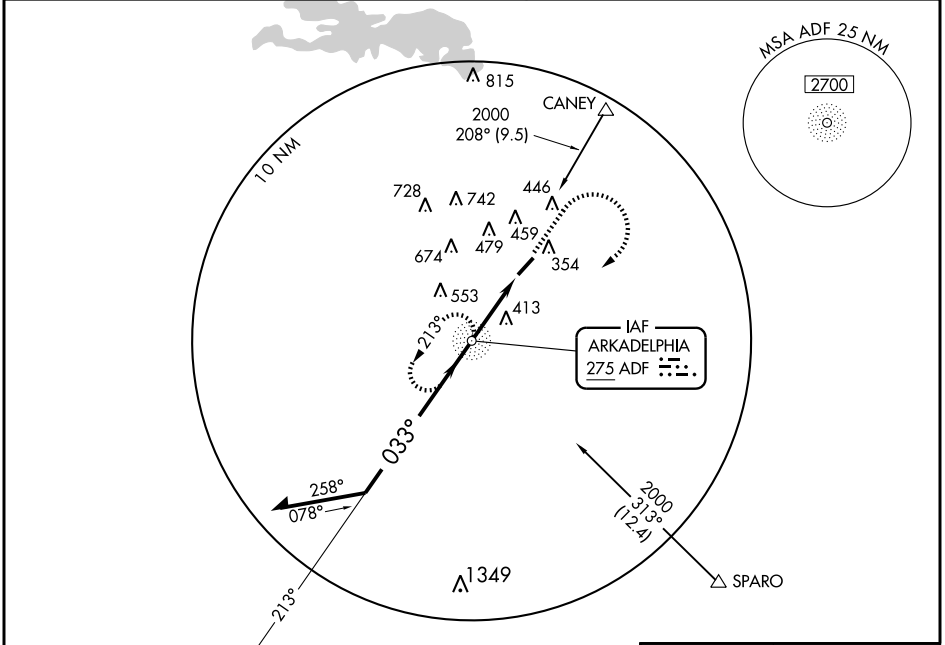
ARKADELPHIA/ DEXTER B. FLORENCE MEMORIAL FIELD (M89)

NDB ADF 275	APP CRS 033°	Rwy Idg 5002
		TDZE 182
		Apt Elev 182

▲ Use Hot Springs altimeter setting; if not received, use Little Rock altimeter setting and increase all MDAs 20 feet.

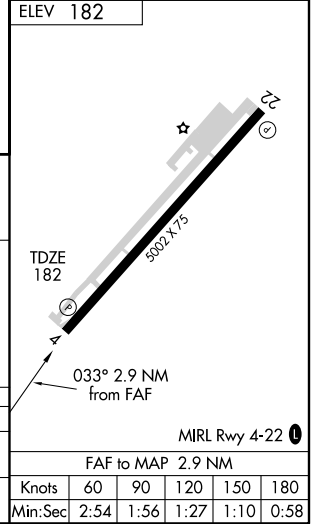
▲ NA MISSED APPROACH: Climb to 1400 then climbing right turn to 2000 direct ADF NDB and hold.

ASOS 118.175	MEMPHIS CENTER 128.475 377.15	UNICOM 122.7 (CTAF) 0
------------------------	---	---------------------------------



SC-1, 22 OCT 2009 to 19 NOV 2009

SC-1, 22 OCT 2009 to 19 NOV 2009



Remain within 10 NM	NDB	1400	2000	ADF 275
2000	213°	↑	↷	ADF 275
1300	033°			
VGSI and descent angles not coincident.	1300			
	3.52°			
	TCH 45			
	2.9 NM			

CATEGORY	A	B	C	D
S-4	880-1 698 (700-1)		880-2 698 (700-2)	NA
CIRCLING	880-1 698 (700-1)		880-2 698 (700-2)	NA

MIRL Rwy 4-22 0					
FAF to MAP 2.9 NM					
Knots	60	90	120	150	180
Min:Sec	2:54	1:56	1:27	1:10	0:58

ARKADELPHIA, ARKANSAS
Amdt 7 08269

ARKADELPHIA/ DEXTER B. FLORENCE MEMORIAL FIELD (M89)
34°06'N-93°04'W

NDB RWY 4