

MANKATO, MINNESOTA

AL-5755 (FAA)

VOR/DME MKT 110.8 Chan 45	APP CRS 340°	Rwy Idg TDZE Apt Elev	6600 1021 1021
---	------------------------	-----------------------------	---

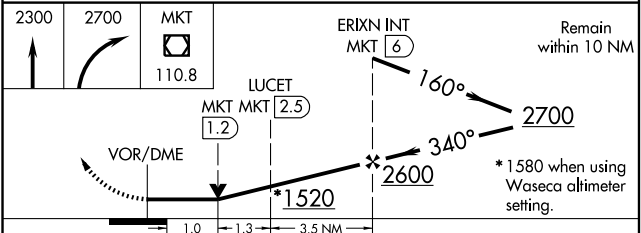
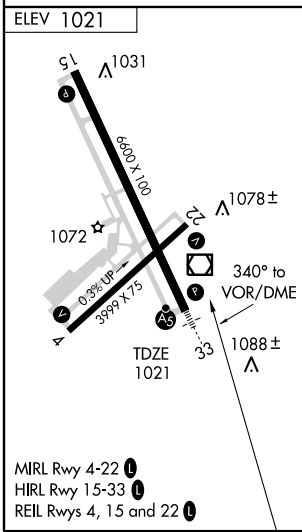
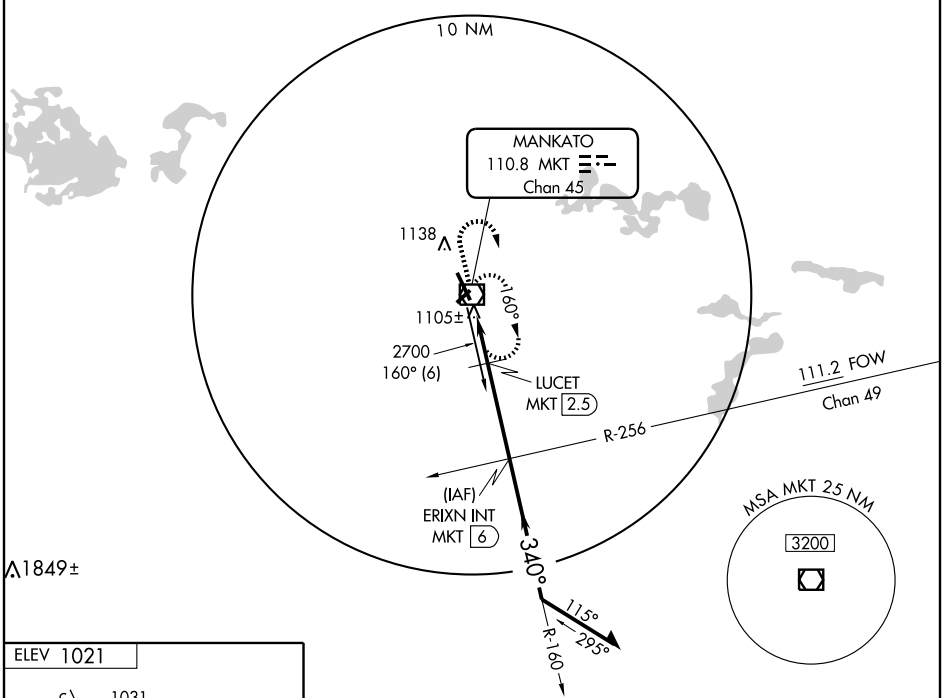
VOR RWY 33

MANKATO RGNL (MKT)

⚠ VDP NA when using Waseca altimeter setting. When local altimeter setting not received use Waseca altimeter setting and increase all MDA 60 feet, and increase S-33 Cats C and D visibility ¼ mile and LUCET FIX MINIMUMS S-33 Cat C ¼ mile. For inoperative MALSR increase LUCET FIX MINIMUMS Cat D visibility ¼ mile.

MALSR MISSED APPROACH: Climb to 2300 then climbing right turn to 2700 direct MKT VOR/DME and hold.

AWOS-3 110.8	MINNEAPOLIS CENTER 135.0 306.9	UNICOM 122.725 (CTAF)
------------------------	--	---------------------------------



CATEGORY	A	B	C	D
S-33	1520-½ 499 (500-½)		1520-¾ 499 (500-¾)	1520-1 499 (500-1)
CIRCLING	1520-1 499 (500-1)		1520-1½ 499 (500-1½)	1580-2 559 (600-2)
LUCET FIX MINIMUMS				
S-33	1400-½ 379 (400-½)			1400-1 379 (400-1)
CIRCLING	1440-1 419 (500-1)	1480-1 459 (500-1)	1480-1½ 459 (500-1½)	1580-2 559 (600-2)

MANKATO, MINNESOTA
Amdt 8 09267

44°13'N - 93°55'W

MANKATO RGNL (MKT) VOR RWY 33

NC-1, 22 OCT 2009 to 19 NOV 2009

NC-1, 22 OCT 2009 to 19 NOV 2009