

RNAV (GPS) RWY 33

MANKATO RGNL (MKT)

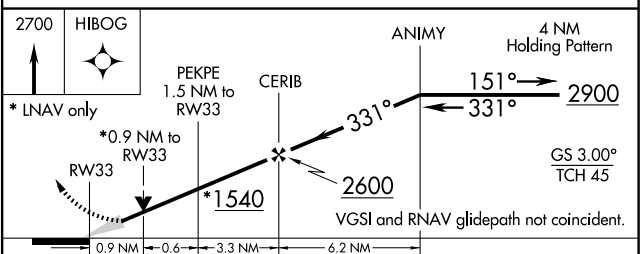
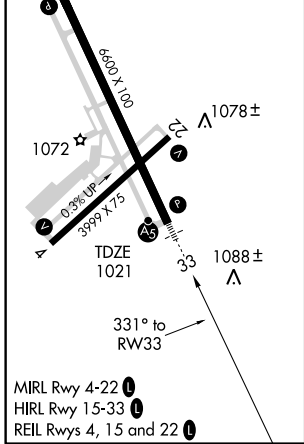
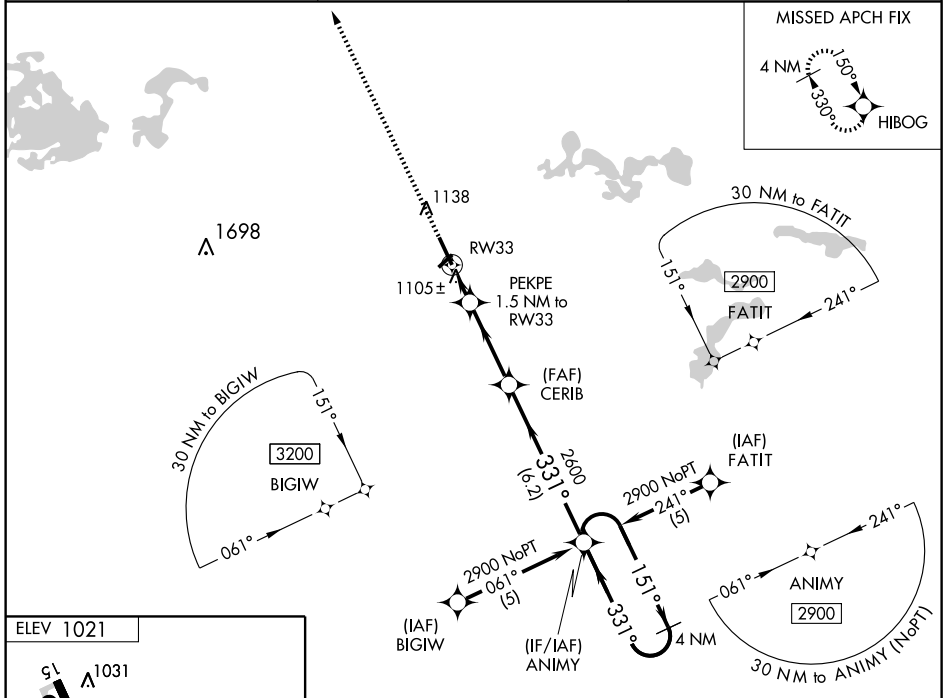
WAAS CH 86315 W33A	APP CRS 331°	Rwy Ldg 6600 TDZE 1021 Apt Elev 1021
--	------------------------	---

For uncompensated Baro-VNAV systems, LNAV/VNAV NA below -17°C (2°F) or above 46°C (114°F). DME/DME RNP-0.3 NA. When local altimeter setting not received use Waseca altimeter setting and increase all DA 57 feet, all MDA 60 feet, and increase LNAV/VNAV all Cats visibility ½ mile. Inoperative table does not apply to LNAV Cat D. When using Waseca altimeter setting; for inoperative MALSR increase LPV all Cats visibility ½ mile and LNAV Cat D visibility ¼ mile. Baro-VNAV and VDP NA when using Waseca altimeter setting.

MALSR
AS

MISSED APPROACH:
Climb to 2700 direct HIBOG and hold.

AWOS-3 110.8	MINNEAPOLIS CENTER 135.0 306.9	UNICOM 122.725 (CTAF)
------------------------	--	---------------------------------



CATEGORY	A	B	C	D
LPV DA		1221-½	200 (200-½)	
LNAV/VNAV DA		1375-¾	354 (400-¾)	
LNAV MDA		1360-½	339 (400-½)	1360-1 339 (400-1)
CIRCLING	1440-1 419 (500-1)	1480-1 459 (500-1)	1480-1½ 459 (500-1½)	1580-2 559 (600-2)

NC-1, 22 OCT 2009 to 19 NOV 2009

NC-1, 22 OCT 2009 to 19 NOV 2009