

MANKATO, MINNESOTA

AL-5755 (FAA)

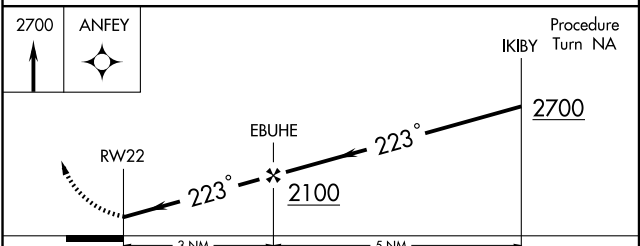
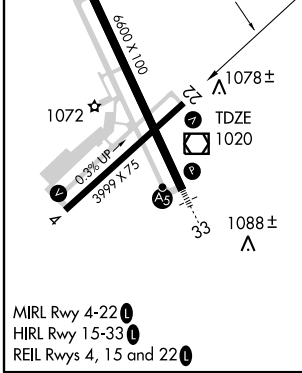
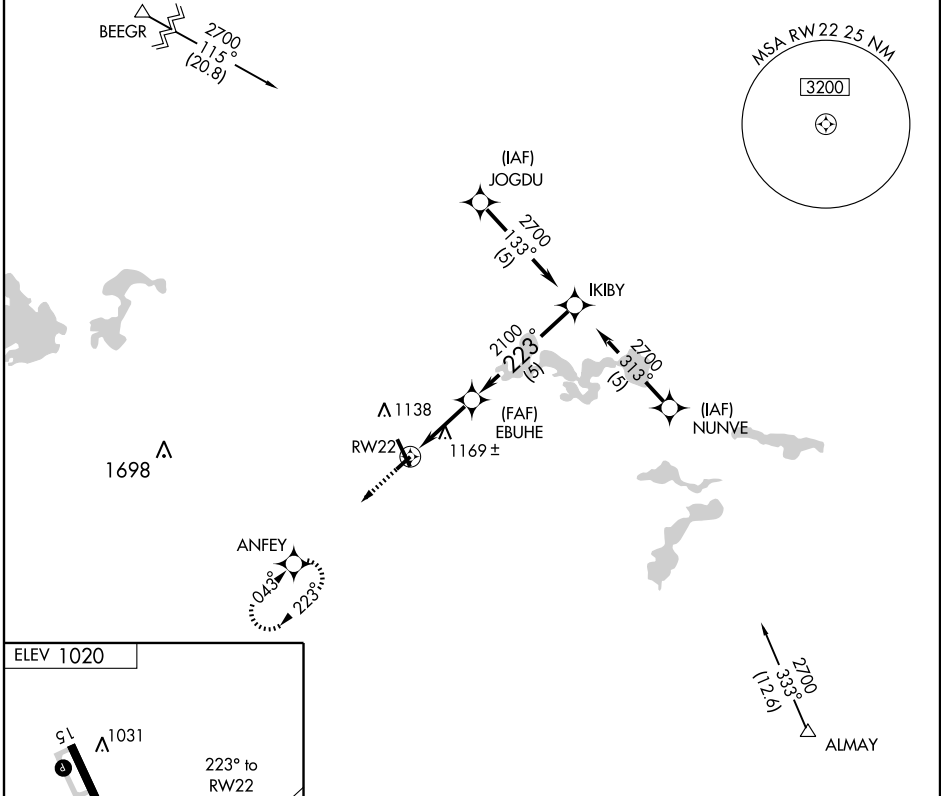
GPS RWY 22

MANKATO RGNL (MKT)

APP CRS	Rwy Idg	3999
223°	TDZE	1020
	Apt Elev	1020

NA MISSED APPROACH: Climb to 2700 direct ANFEY WP and hold.

AWOS-3 110.8	MINNEAPOLIS CENTER 135.0 306.9	UNICOM 122.725 (CTAF) 0
------------------------	--	--



CATEGORY	A	B	C	D
S-22	1420-1	400 (400-1)		1420-1¼ 400 (400-1¼)
CIRCLING	1460-1 440 (500-1)	1480-1 460 (500-1)	1480-1½ 460 (500-1½)	1580-2 560 (600-2)

MANKATO, MINNESOTA
Orig 09267

44°13'N - 93°55'W

MANKATO RGNL (MKT)

GPS RWY 22

NC-1, 22 OCT 2009 to 19 NOV 2009

NC-1, 22 OCT 2009 to 19 NOV 2009