

MANKATO, MINNESOTA

AL-5755 (FAA)

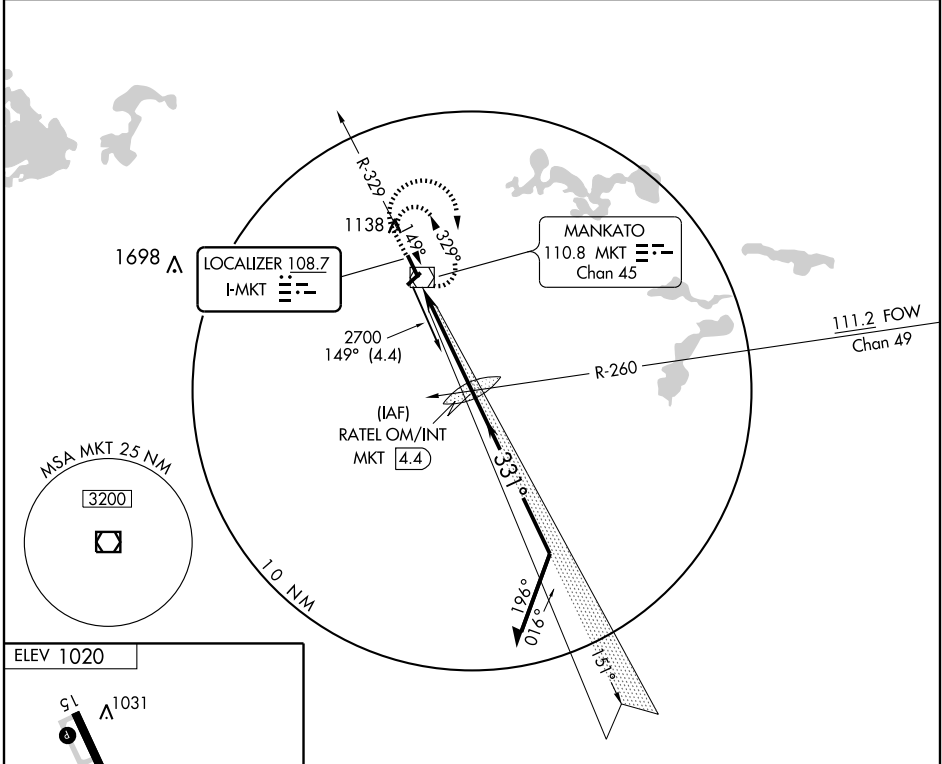
COPTER ILS or LOC RWY 33

MANKATO RGNL (MKT)

LOC I-MKT 108.7	APP CRS 331°	Rwy Idg TDZE Apt Elev	6600 1020 1020
---------------------------	------------------------	-----------------------------	---

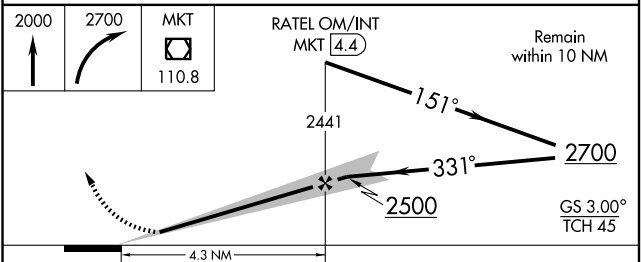
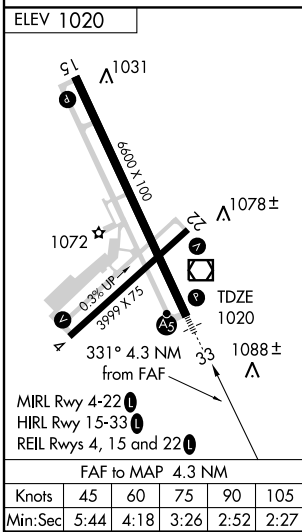
<p>▼ For inoperative MALSRS increase visibility to ½ mile.</p>	<p>MALSRS</p>	<p>MISSED APPROACH: Climb to 2000 then climbing right turn to 2700 direct MKT VOR/DME and hold.</p>
--	---------------	---

AWOS-3 110.8	MINNEAPOLIS CENTER 135.0 306.9	UNICOM 122.725 (CTAF) 0
------------------------	--	-----------------------------------



NC-1, 22 OCT 2009 to 19 NOV 2009

NC-1, 22 OCT 2009 to 19 NOV 2009



CATEGORY	COPTER	B	C	D
S-ILS 33	1220-¼ 200 (200-¼)		NA	
S-LOC 33	1420-¼ 400 (400-¼)		NA	
CIRCLING		NA		

MANKATO, MINNESOTA
Orig-B 09267

44°13'N - 93°55'W

COPTER ILS or LOC RWY 33

MANKATO RGNL (MKT)