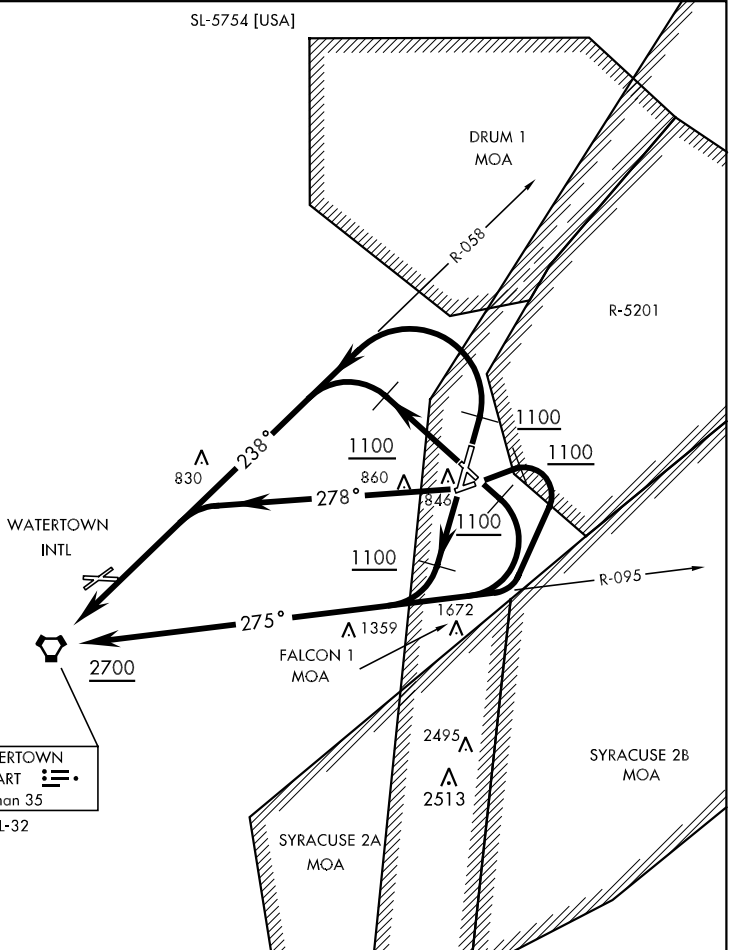


# WATERTOWN-ONE DEPARTURE (ART 1 • ART)

ATIS 119.525  
 GND CON 121.9 229.8  
 WHEELER-SACK TOWER 118.75 290.25  
 WHEELER-SACK DEP CON 128.25 257.6

SL-5754 [USA]

NE-2, 22 OCT 2009 to 19 NOV 2009



NE-2, 22 OCT 2009 to 19 NOV 2009



## DEPARTURE ROUTE DESCRIPTION

TAKE-OFF RWY 3 and 33: Climb runway heading to 1100, then climbing left turn via ART VORTAC R-058 to ART VORTAC. Cross ART VORTAC at or above 2700.

TAKE-OFF RWY 8, 15, and 21: Climb runway heading to 1100, then climbing right turn via ART VORTAC R-095 to ART VORTAC. Cross ART VORTAC at or above 2700.

TAKE-OFF RWY 26: Climb via heading 278° to intercept ART VORTAC R-058 to ART VORTAC. Cross ART VORTAC at or above 2700.

# WATERTOWN-ONE DEPARTURE (ART 1 • ART)