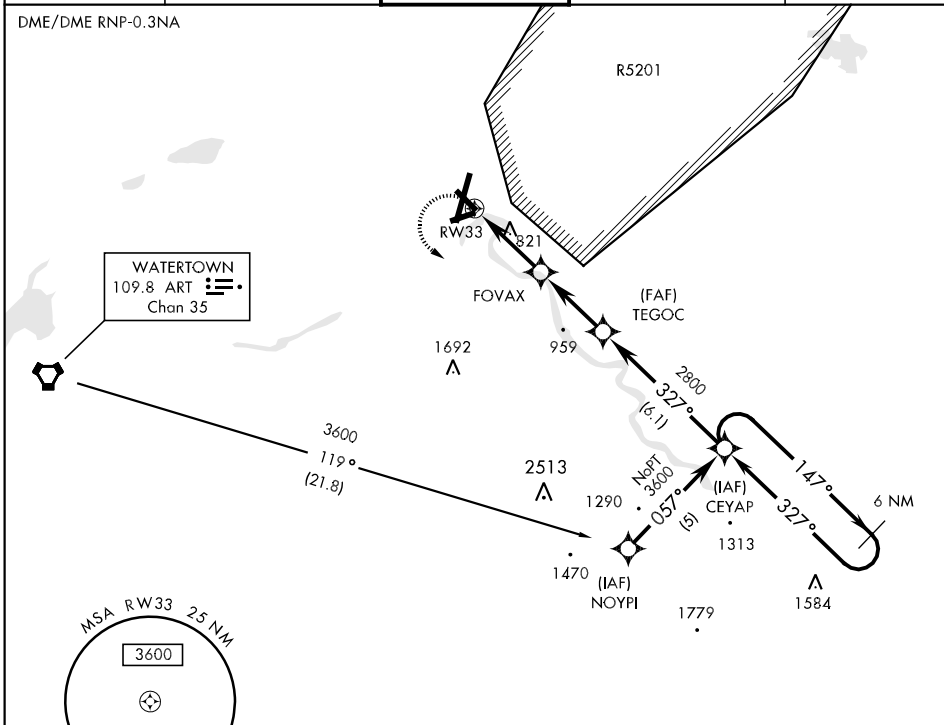


APCH CRS	Rwy ldg	4998
327°	TDZE	688
	Arpt Elev	688

- * Circling NA for CAT BCD to Rwy 8
- * Circling NA E of Rwy 21 and 33.
- Visibility reduction by helicopters NA.

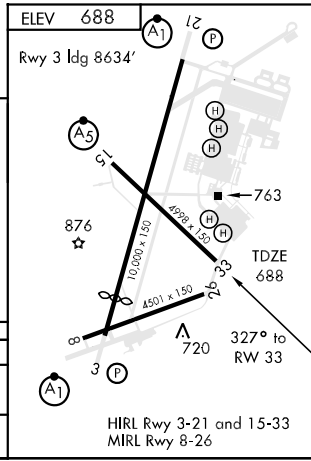
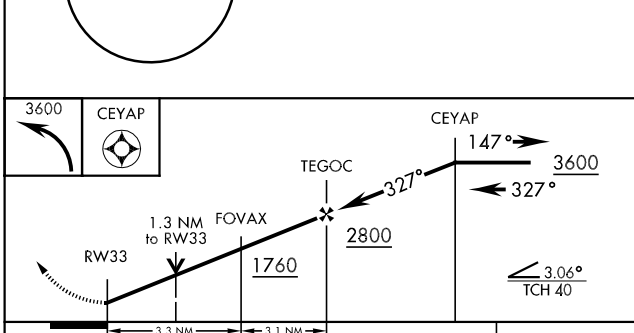
MISSED APPROACH: Climbing left turn to 3600 direct CEYAP and hold.

ATIS	WHEELER-SACK APP CON	WHEELER-SACK TOWER	GND CON	ASR/PAR
119.525	128.25 257.6	118.75 290.25	121.9 229.8	



NE-2, 22 OCT 2009 to 19 NOV 2009

NE-2, 22 OCT 2009 to 19 NOV 2009



CATEGORY	A	B	C	D
LNVA MDA	1140-1	452 (500-1)	1140-1½ 452 (500-1½)	1140-1½ 452 (500-1½)
CIRCLING *	1180-1	492 (500-1)	1180-1½ 492 (500-1½)	1240-2 552 (600-2)