

# RNAV (GPS) RWY 3

WHEELER-SACK AAF (KGTB)

WAAS Chan <b>93714</b> <b>W03A</b>	APCH CRS <b>029°</b>	Rwy Idg <b>8634</b> TDZE <b>685</b> Arpt Elev <b>688</b>
--	-------------------------	--

AL-5754 [USA]

- ▼ \* When ALS inop, increase LPV CAT ABCDE vis to 3/4 mile.
- \*\* When ALS inop, increase LNAV/VNAV CAT ABCDE vis to 1 1/4 miles.
- \*\*\* When ALS inop, increase LNAV CAT AB vis to 1 mile, CAT C vis to 1 1/4 miles, CAT DE vis to 1 1/2 miles.



MISSED APPROACH: Climb to 4000 direct WITED and hold.

ATIS <b>119.525</b>	WHEELER-SACK APP CON <b>128.25 257.6</b>	WHEELER-SACK TOWER <b>118.75 290.25</b>	GND CON <b>121.9 229.8</b>	ASR/PAR
------------------------	---	--	-------------------------------	---------

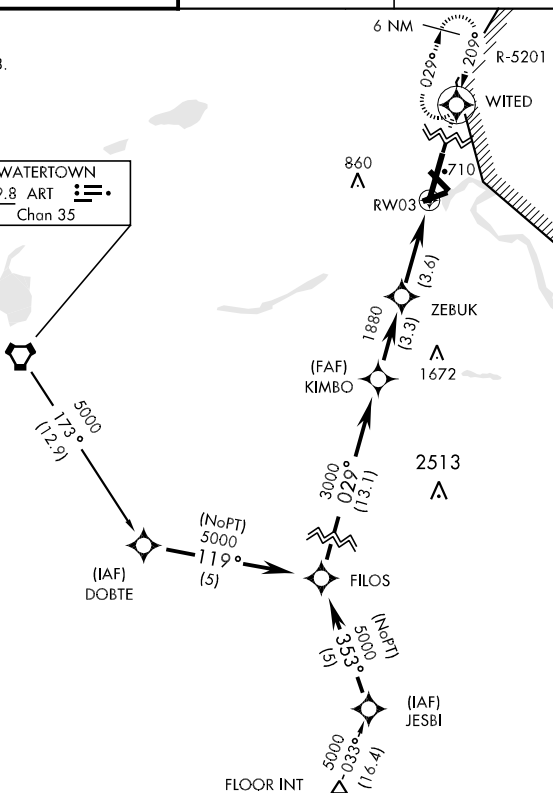
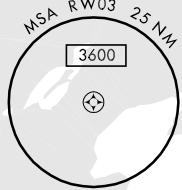
- \*\*\*\* Circling NA E of Rwy 21 and 33.
- \*\*\*\* Circling NA for CAT BCD to Rwy 8.
- \*\*\*\* Circling NA for CAT E to Rwy 8-26 and 15-33.

DME/DME RNP -0.3 NA

For uncompensated BARO-VNAV systems,  
LNAV/VNAV NA BELOW -16°C (4°F)  
or above 48°C (118°F)

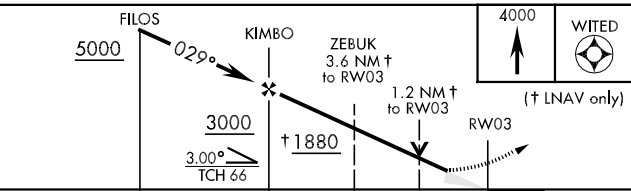
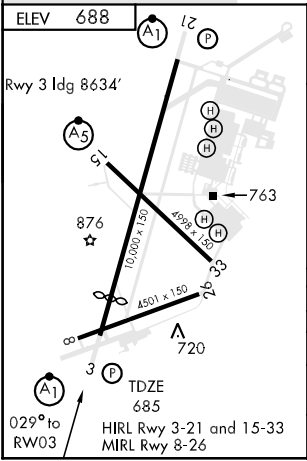
PROCEDURE NA FOR  
ARRIVAL AT ART  
VORTAC VIA V29-423  
NORTHBOUND

WATERTOWN  
109.8 ART   
Chan 35



NE-2, 22 OCT 2009 to 19 NOV 2009

NE-2, 22 OCT 2009 to 19 NOV 2009



CATEGORY	A	B	C	D	E
LPV DA *	885-1/2 200 (200-1/2)				
LNAV/VNAV DA **	1040-3/4 355 (400-3/4)				
LNAV MDA ***	1140-1/2 455 (500-1/2)	1140-3/4 455(500-3/4)	1140-1 455 (500-1)		
CIRCLING ****	1180-1 492 (500-1)	1180-1 1/2 492(500-1 1/2)	1240-2 552 (600-2)	1520-3 832 (900-3)	