

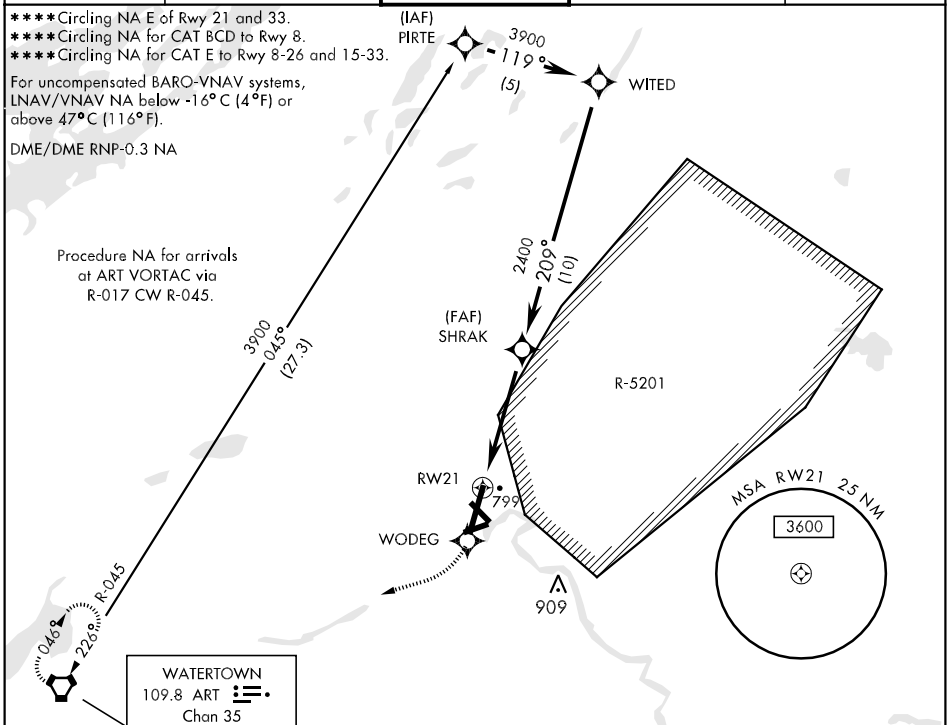
AL-5754 [USA]

WAAS Ch 63007 W21A	APCH CRS 209°	Rwy ldg 10,000 TDZE 677 Arprt Elev 688
--	-------------------------	---

▼ ***When ALS inop, increase LPV CAT ABCDE vis to ¾ mile.**
****When ALS inop, increase LNAV/VNAV CAT ABCDE vis to 1 ¼ miles.**
*****When ALS inop, increase LNAV CAT ABC vis to 1 mile, CAT DE vis to 1 ¼ miles.**

ALSF-1 MISSED APPROACH: Climb to 3000 direct WODEG and via 270° track to ART VORTAC and hold.

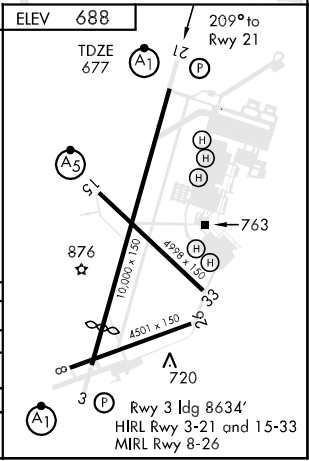
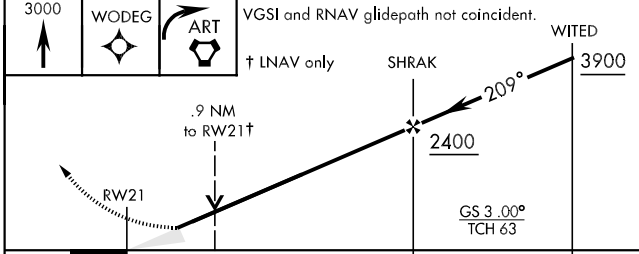
ATIS 119.525	WHEELER-SACK APP CON 128.25 257.6	WHEELER-SACK TOWER 118.75 290.25	GND CON 121.9 229.8	ASR/PAR
------------------------	---	--	-------------------------------	---------



NE-2, 22 OCT 2009 to 19 NOV 2009

NE-2, 22 OCT 2009 to 19 NOV 2009

ELEV 688



CATEGORY	A	B	C	D	E
LPV DA *	877-½ 200 (200-½)				
LNAV/VNAV DA **	1056-¾ 379 (400-¾)				
LNAV MDA ***	1020-½ 343 (400-½)	1020-¾ 343 (400-¾)			
CIRCLING ****	1180-1 492 (500-1)	1180-1½ 492 (500-1½)	1240-2 552 (600-2)	1520-3 832 (900-3)	