

AL-5754 [USA]

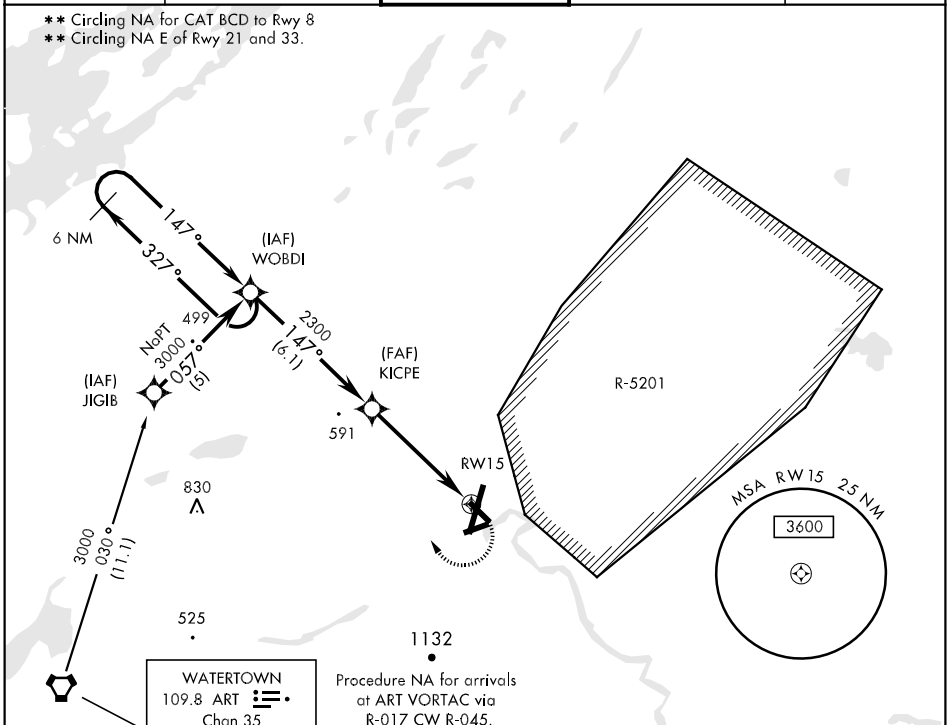
APCH CRS <b>147°</b>	Rwy ldg TDZE Arpt Elev	<b>4998</b> <b>687</b> <b>688</b>
-------------------------	------------------------------	---

**▼** \* When ALS inop, increase CAT AB vis to 1 mile, CAT C vis to 1¼ miles, CAT D vis to 1½ miles. DME/DME RNP-0.3 NA.

**MALSR**  
A5

MISSED APPROACH: Climbing right turn to 3000 WOBDI and hold.

ATIS <b>119.525</b>	WHEELER-SACK APP CON <b>128.25 257.6</b>	WHEELER-SACK TOWER <b>118.75 290.25</b>	GND CON <b>121.9 229.8</b>	ASR/PAR
------------------------	---	--	-------------------------------	---------



NE-2, 22 OCT 2009 to 19 NOV 2009

NE-2, 22 OCT 2009 to 19 NOV 2009

ELEV 688				
CATEGORY	A	B	C	D
INAV MDA *	1140-½	453 (500-½)	1140-¾ 453 (500-¾)	1140-1 453 (500-1)
CIRCLING **	1180-1	492 (500-1)	1180-1½ 492 (500-1½)	1240-2 552 (600-2)