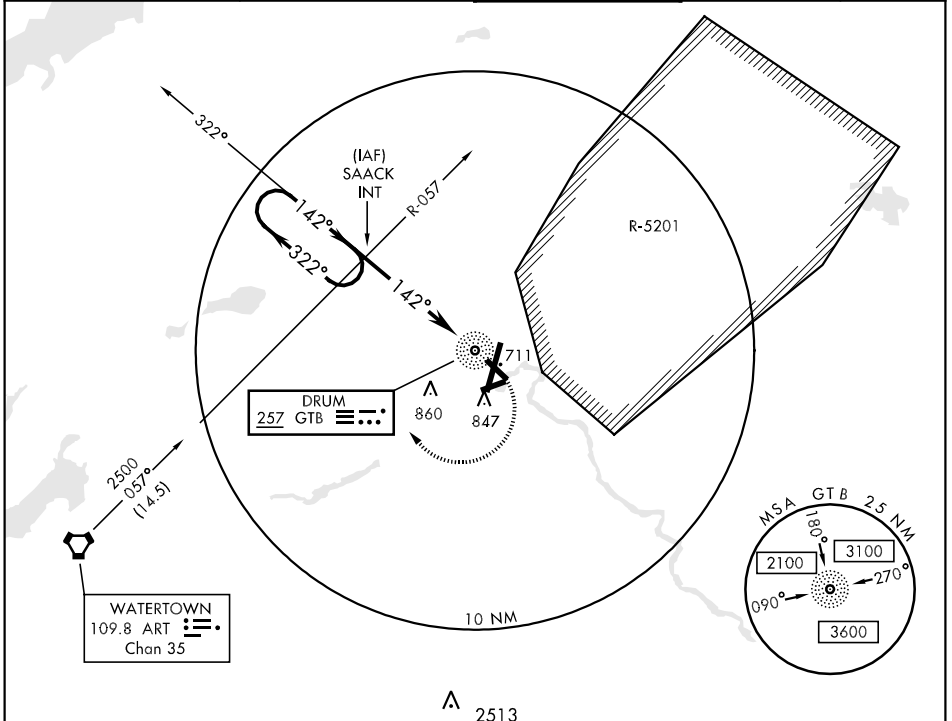


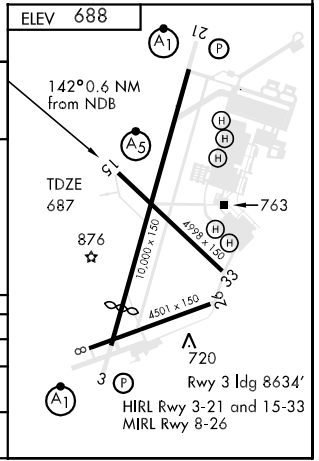
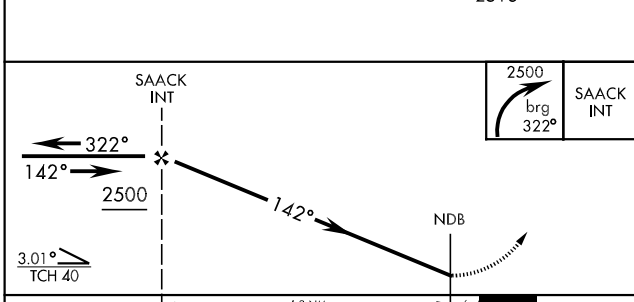
NDB GTB 257	APCH CRS 142°	Rwy ldg TDZE 4998 687 Arpt Elev 688	AL-5754 [USA]	WHEELER-SACK AAF (KGTB)
* When ALS inop, increase CAT AB vis to 1 mile, CAT CD vis to 1¼ mile. ** Circling NA E of Rwy 21 and 33. Circling NA for CAT BCD to Rwy 8.				MALSR
MISSED APPROACH: Climbing right turn to 2500 via GTB brg 322° to SAACK INT and hold.				

ATIS 119.525	WHEELER-SACK APP CON 128.25 257.6	WHEELER-SACK TOWER 118.75 290.25	GND CON 121.9 229.8	ASR/PAR
------------------------	---	--	-------------------------------	---------



NE-2, 22 OCT 2009 to 19 NOV 2009

NE-2, 22 OCT 2009 to 19 NOV 2009



CATEGORY	A	B	C	D
S-15*	1100-½ 413 (500-½)		1100-¾ 413 (500-¾)	
CIRCLING**	1180-1 492 (500-1)		1180-1½ 492 (500-1½)	1240-2 552 (600-2)
S-ASR 15	1100-½ 413 (500-½)		1100-¾ 413 (500-¾)	