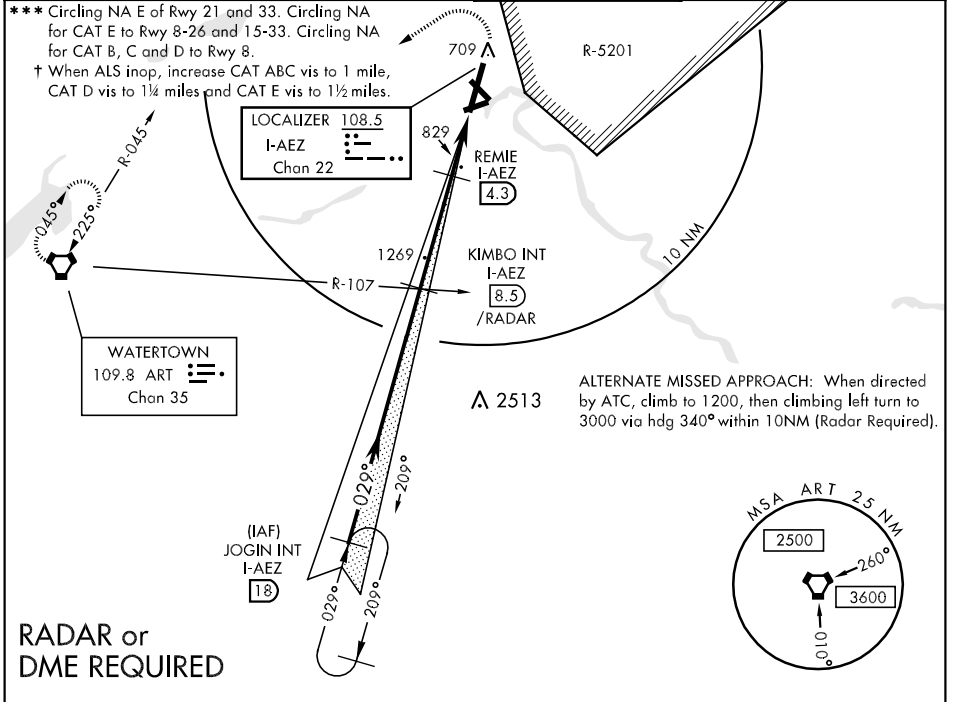


LOC I-AEZ 108.5	APCH CRS 029°	Rwy Idg TDZE Arpt Elev 8634 685 688	AL-5754 [USA]	WHEELER-SACK AAF (KGTB)
** When ALS inop, increase CAT ABCDE vis to 3/4 mile. ** When ALS inop, increase CAT A vis to 1 mile, CAT B vis to 1 1/4 miles, CAT C vis to 2 1/2 miles, CAT D vis to 2 3/4 miles, and CAT E vis to 3 miles.		ALSF-1 	MISSED APPROACH: Climb to 1200, then climbing left turn to 5000 direct ART VORTAC and hold. Continue climb-in-hold to 5000.	

ATIS 119.525	WHEELER-SACK APP CON 128.25 257.6	WHEELER-SACK TOWER 118.75 290.25	GND CON 121.9 229.8	ASR/PAR
------------------------	---	--	-------------------------------	---------



NE-2, 22 OCT 2009 to 19 NOV 2009

NE-2, 22 OCT 2009 to 19 NOV 2009

RADAR or DME REQUIRED

JOGIN INT I-AEZ 18	KIMBO INT I-AEZ 8.3 /RADAR ART R-107	1200	5000	ART	ELEV 688		
← 209°	← 029°	← 029°	← 292°	← 209°	← 029°		
5000	3000	1560 LOC ONLY	1.1 NM to RW 3	1.6	1.3		
GS 3.00° TCH 66		-6.9 NM					
CATEGORY	A	B	C	D	E		
S-ILS 3 *	885- 1/2					200 (200-1/2)	
S-LOC 3 **	1560-1/2 875 (900-1/2)	1560- 3/4 875 (900-3/4)	1560-2 875 (900-2)	1560-2 1/4 875(900-2 1/4)	1560-2 1/2 875(900-2 1/2)		
*** CIRCLING	1560-1 872 (900-1)	1560-1 1/4 872 (900-1 1/4)	1560-2 1/2 872 (900-2 1/2)	1560-2 3/4 872(900-2 3/4)	1560-3 872 (900-3)		
DME MINIMUMS							
S-LOC 3 †	1080-1/2	395 (400-1/2)	1080- 3/4	395 (400-3/4)	1080-1	395 (400-1)	
*** CIRCLING	1180-1	492 (500-1)	1180-1 1/2	492 (500-1 1/2)	1240-2	552 (600-2)	
					1520-3	832 (900-3)	
TDZE 685 FAF to MAP 6.9 NM 029° 6.9 NM from FAF							
Knots						60 90 120 150 180	
Min:Sec						6:54 4:36 3:27 2:46 2:18	