

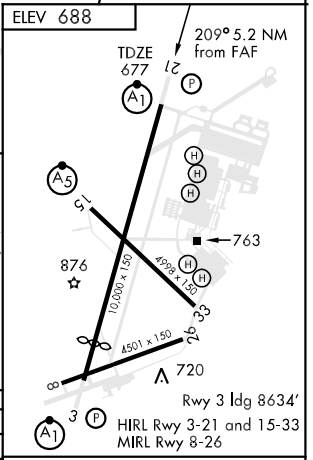
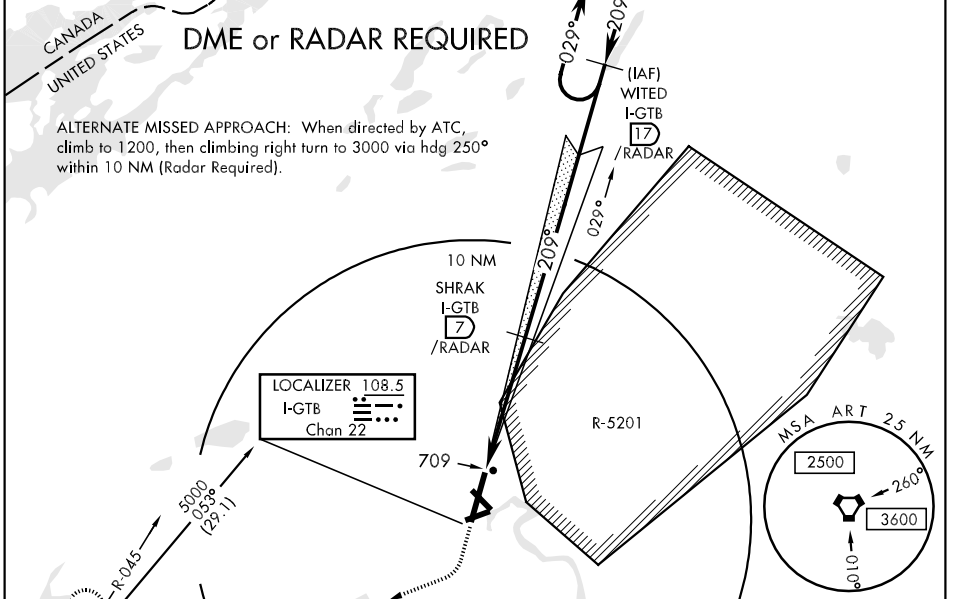
LOC I-GTB 108.5	APCH CRS 209°	Rwy ldg 10,000 TDZE 677 Arpt Elev 688	AL-5754 [USA]	WHEELER-SACK AAF (KGTB)
---------------------------	-------------------------	--	---------------	-------------------------

* When ALS inop, increase CAT ABCDE vis to ¾ mile.
 ** When ALS inop, increase CAT ABC vis to 1 mile, CAT DE vis to 1¼ miles.

ALSF-1 MISSED APPROACH: Climb to 1200, then climbing right turn to 5000 direct ART VORTAC and hold. Continue climb-in-hold to 5000.

ATIS 119.525	WHEELER-SACK APP CON 128.25 257.6	WHEELER-SACK TOWER 118.75 290.25	GND CON 121.9 229.8	ASR/PAR
------------------------	---	--	-------------------------------	---------

*** Circling NA E of Rwy 21 and 33. Circling NA for CAT E to Rwy 8-26 and 15-33. Circling NA for CAT B, C and D to Rwy 8.



CATEGORY	A	B	C	D	E
S-ILS 21*	877-½				
S-LOC 21**	1020-½	343 (400-½)	1020-¾	343 (400-¾)	
CIRCLING***	1180-1	492 (500-1)	1180-1½	1240-2	1520-3
			492 (500-1½)	552 (600-2)	832 (900-3)

FAF to MAP 5.2 NM					
Knots	120	140	160	180	200
Min:Sec	2:36	2:14	1:57	1:44	1:34

NE-2, 22 OCT 2009 to 19 NOV 2009

NE-2, 22 OCT 2009 to 19 NOV 2009