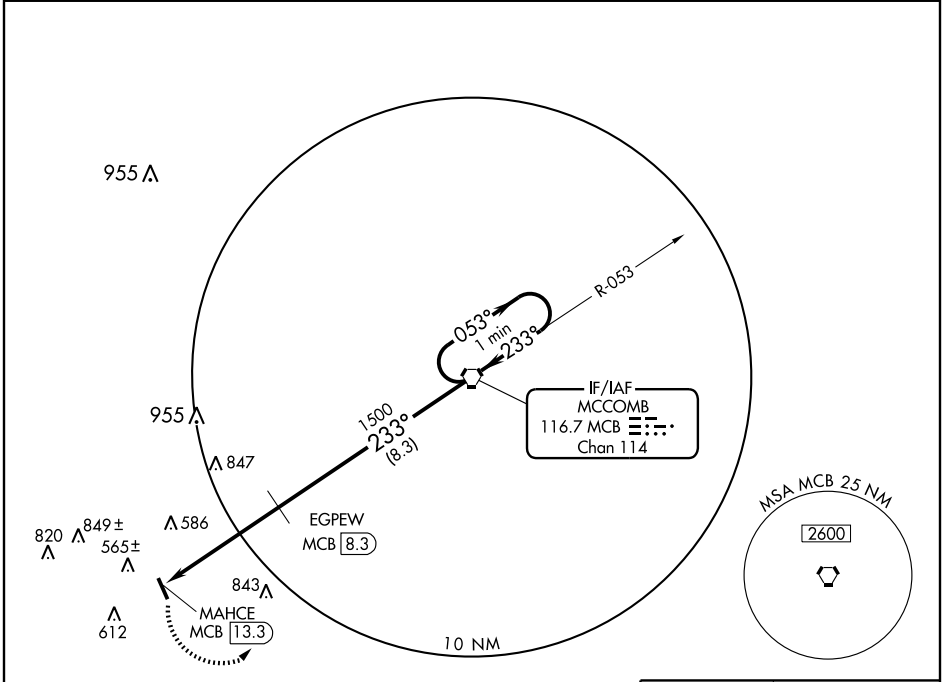


VORTAC MCB 116.7 Chan 114	APP CRS 233°	Rwy Idg TDZE Apt Elev	N/A N/A 413
---	------------------------	-----------------------------	--

⚠ When local altimeter setting not received, use Natchez altimeter setting and increase MDA 140 feet and Cat C and D visibility ¼ mile.

⚠ MISSED APPROACH: Climbing left turn to 2000 direct MCB VORTAC and hold

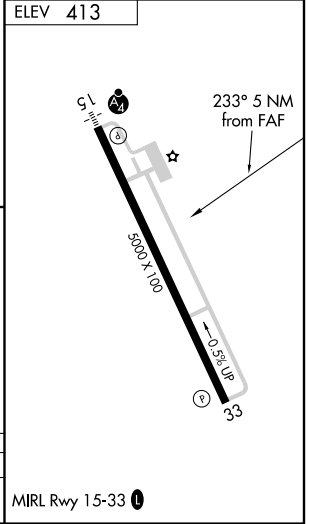
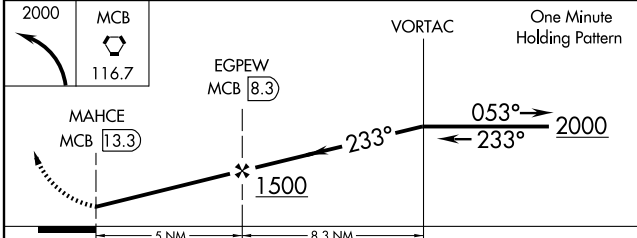
ASOS 119.025	HOUSTON CENTER 126.8 327.8	UNICOM 123.05 (CTAF) 0
------------------------	--------------------------------------	----------------------------------



SC-4, 22 OCT 2009 to 19 NOV 2009

SC-4, 22 OCT 2009 to 19 NOV 2009

NoPT for arrival on MCB VORTAC airway radials 345 CW 145.



CATEGORY	A	B	C	D
CIRCLING	920-1	507 (600-1)	920-1½ 507 (600-1½)	980-2 567 (600-2)

MIRL Rwy 15-33 0