

RNAV (GPS) RWY 33

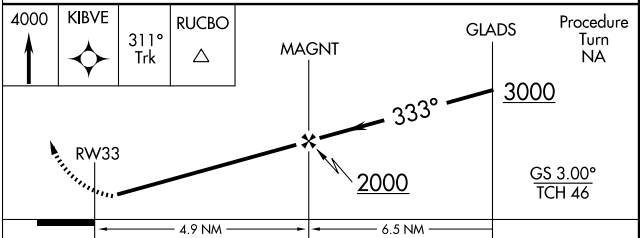
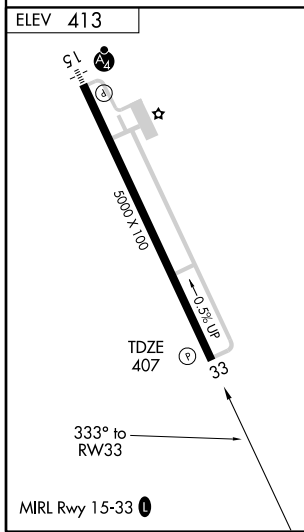
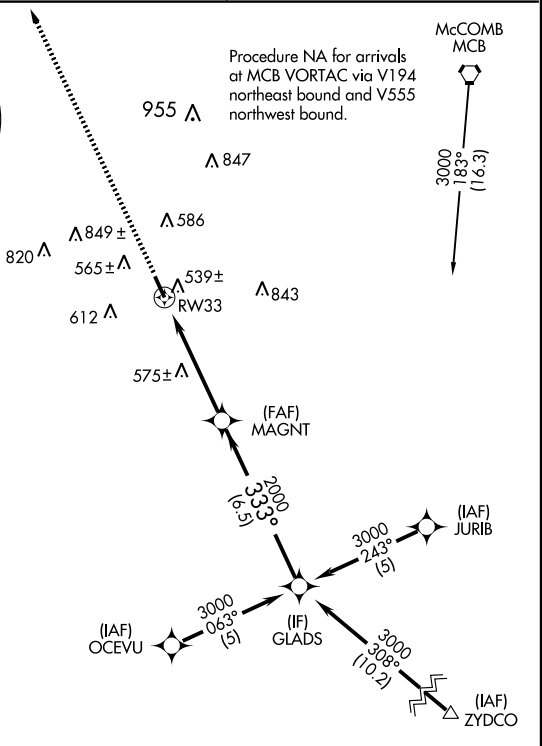
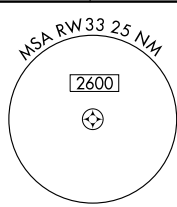
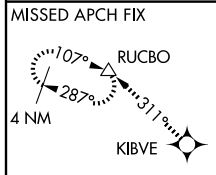
MCCOMB-PIKE COUNTY-JOHN E. LEWIS FIELD (MCB)

| | | |
|--|------------------------|---|
| WAAS CH 77808 W33A | APP CRS 333° | Rwy Idg 5000 TDZE 407 Apt Elev 413 |
|--|------------------------|---|

⚠ For uncompensated Baro-VNAV systems, LNAV/VNAV NA below -15°C (5°F) or above 48°C (118°F). DME/DME RNP-0.3 NA. Visibility reduction by helicopters NA. When local altimeter setting not received, use Natchez altimeter setting and increase all DA/MDA 140 feet and visibility LPV ½ mile all Cats, LNAV/VNAV ½ mile all Cats, LNAV Cat C and D ¼ mile, Circling Cat C and D ¼ mile. Baro-VNAV NA when using Natchez altimeter setting.

MISSED APPROACH: Climb to 4000 direct KIBVE and via 311° track to RUCBO and hold.

| | | |
|------------------------|--------------------------------------|----------------------------------|
| ASOS 119.025 | HOUSTON CENTER 126.8 327.8 | UNICOM 123.05 (CTAF) 0 |
|------------------------|--------------------------------------|----------------------------------|



| CATEGORY | A | B | C | D |
|--------------|--------|-------------|------------------------|------------------------|
| LPV DA | 765-1¼ | | 358 (400-1¼) | |
| LNAV/VNAV DA | 809-1½ | | 402 (400-1½) | |
| LNAV MDA | 840-1 | 433 (500-1) | 840-1¼ 433 (500-1¼) | 840-1½ 433 (500-1½) |
| CIRCLING | 920-1 | 507 (600-1) | 920-1½ 507 (600-1½) | 980-2 567 (600-2) |

RNAV (GPS) RWY 33

SC-4, 22 OCT 2009 to 19 NOV 2009

SC-4, 22 OCT 2009 to 19 NOV 2009