

RNAV (GPS) RWY 15

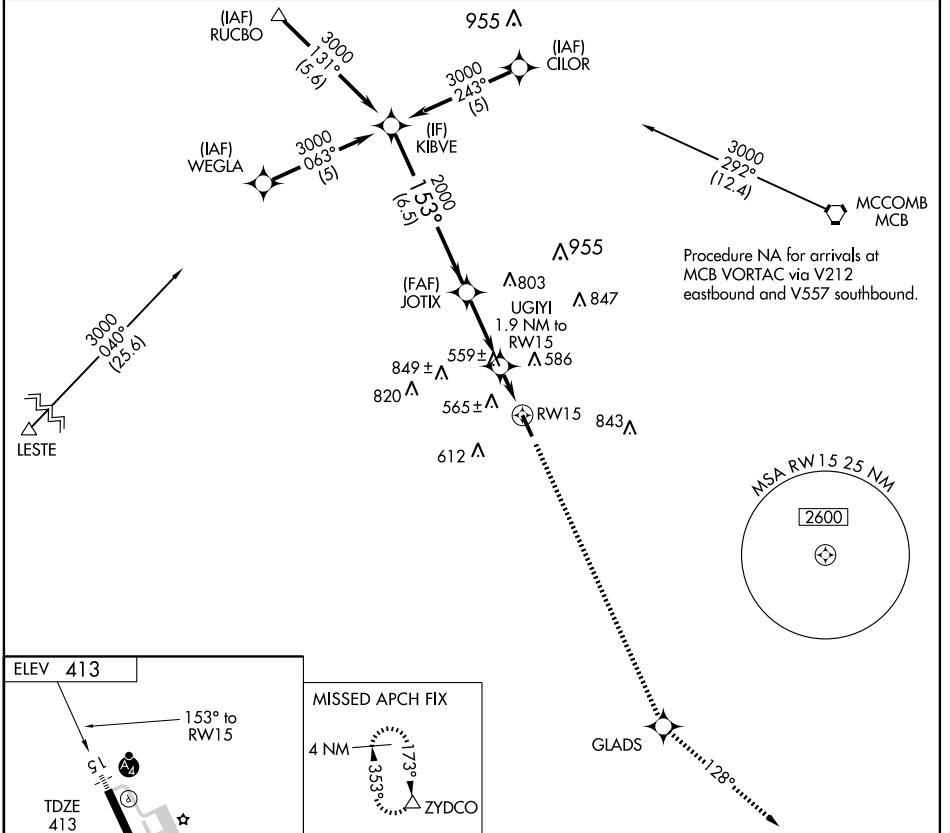
MCCOMB-PIKE COUNTY-JOHN E. LEWIS FIELD (MCB)

APP CRS	Rwy Idg	5000
153°	TDZE	413
	Apt Elev	413

▼ Inoperative table does not apply. DME/DME RNP-0.3 NA. Visibility reduction by helicopters NA. When local altimeter setting not received, use Natchez altimeter setting and increase all MDA 140 feet and LNAV visibility Cat C ¼ mile, Cat D ½ mile.

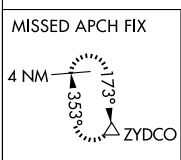
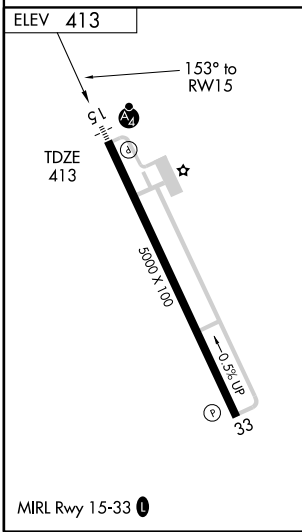
MALSF
 MISSED APPROACH: Climb to 3000 direct GLADS and via 128° track to ZYDCO and hold.

ASOS 119.025	HOUSTON CENTER 126.8 327.8	UNICOM 123.05 (CTAF) 0
------------------------	--------------------------------------	----------------------------------



SC-4, 22 OCT 2009 to 19 NOV 2009

SC-4, 22 OCT 2009 to 19 NOV 2009



Procedure Turn NA VGS1 and descent angles not coincident.	KIBVE 3000 → 153° → JOTIX 2000		3000 GLADS	128° Trk	ZYDCO
	6.5 NM → 2.9 NM → 1.9 NM		UGIYI 1.9 NM to RW15	RW15	1060 TCH 43
CATEGORY	A	B	C	D	
LNAV MDA	820-1	407 (500-1)	820-1¼	407 (500-1¼)	
CIRCLING	920-1	507 (600-1)	920-1½	980-2 567 (600-2)	

RNAV (GPS) RWY 15