

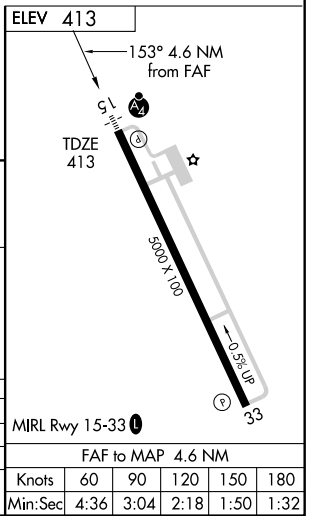
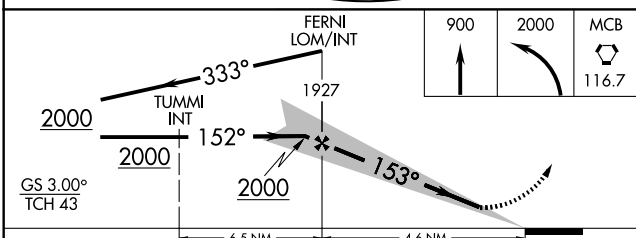
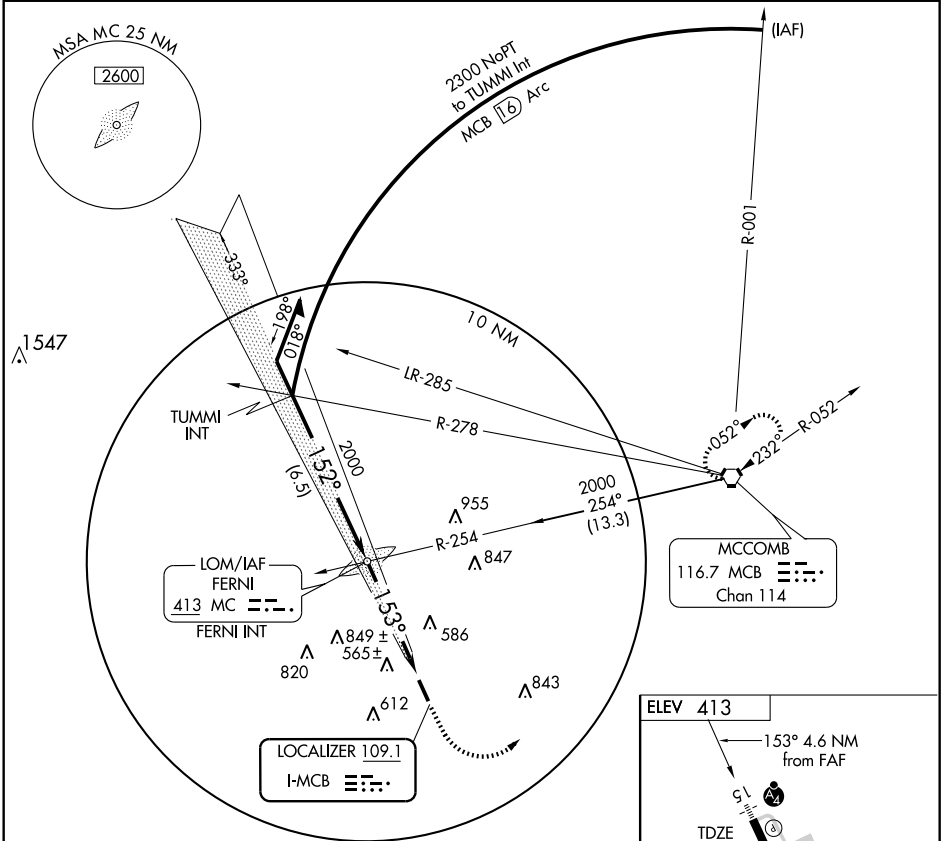
ILS RWY 15

MCCOMB-PIKE COUNTY-JOHN E. LEWIS FIELD (MCB)

LOC I-MCB 109.1	APP CRS 153°	Rwy Idg 5000
		TDZE 413
		Apt Elev 413

Inoperative table does not apply to S-LOC-15 Cat C. MALSF MISSED APPROACH: Climb to 900 then climbing left turn to 2000 direct MCB VORTAC and hold.

ASOS 119.025	HOUSTON CENTER 126.8 327.8	UNICOM 123.05 (CTAF) 0
------------------------	--------------------------------------	----------------------------------



CATEGORY	A	B	C	D
S-ILS 15	613-¾ 200 (200-¾)			
S-LOC 15	820-¾	407 (500-¾)	820-1¼	407 (500-1¼)
CIRCLING	880-1	467 (500-1)	880-1½	980-2
			467 (500-1½)	567 (600-2)

FAF to MAP 4.6 NM					
Knots	60	90	120	150	180
Min:Sec	4:36	3:04	2:18	1:50	1:32

ILS RWY 15

SC-4, 22 OCT 2009 to 19 NOV 2009

SC-4, 22 OCT 2009 to 19 NOV 2009