

NDB RWY 23

WALTERBORO/LOWCOUNTRY RGNL (R.B.W)

NDB RBW 221	APP CRS 245°	Rwy Idg 6002
		TDZE 99
		Apt Elev 99

⚠ If local altimeter setting not received, procedure not authorized.
⚠ NA Inoperative table does not apply to Cat. C.

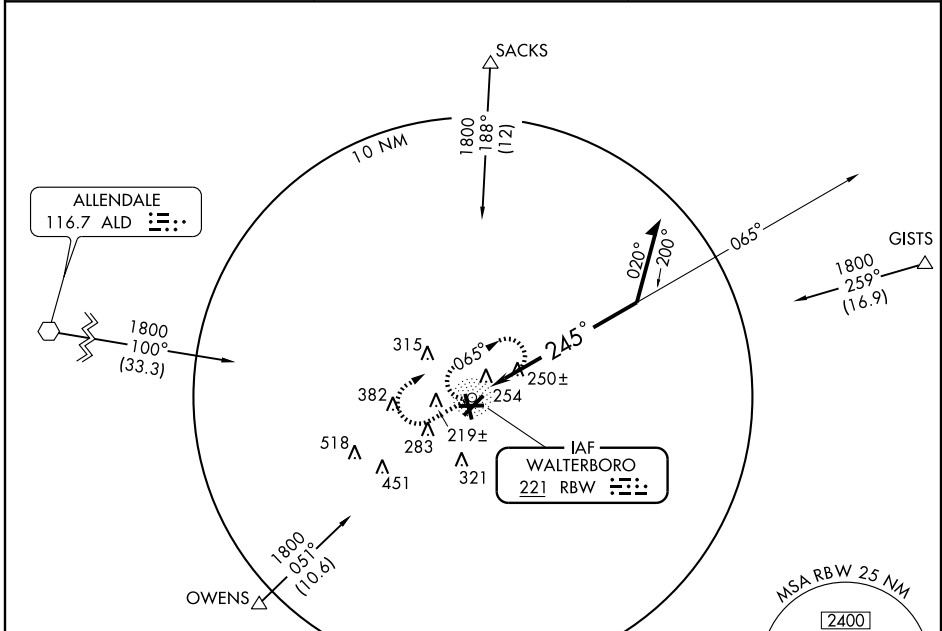
ODALS

MISSED APPROACH: Climb to 1000 then climbing right turn to 1800 direct RBW NDB and hold.

AWOS-3
118.725 221

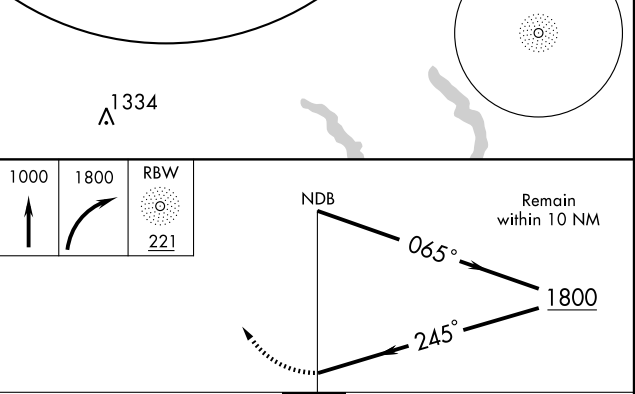
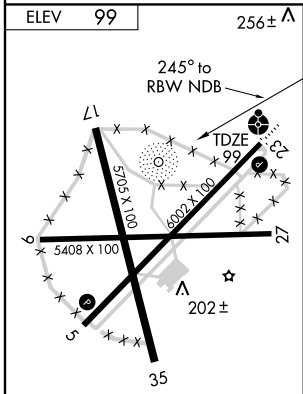
CHARLESTON APP CON
120.7 306.925

UNICOM
122.8 (CTAF) 0



SE-2, 22 OCT 2009 to 19 NOV 2009

SE-2, 22 OCT 2009 to 19 NOV 2009



CATEGORY	A	B	C	D
S-23	680-3/4 581 (600-3/4)	680-1 581 (600-1)	680-1 1/2 581 (600-1 1/2)	680-1 3/4 581 (600-1 3/4)
CIRCLING	680-1 581 (600-1)	680-1 581 (600-1)	680-1 1/2 581 (600-1 1/2)	680-2 581 (600-2)